

**ข้อมูลการศึกษาลักษณะการใช้ไฟฟ้า**

**เดือน กุมภาพันธ์ 2564**

Table 1-1

COINCIDENT WITH LOAD RESEARCH SYSTEM'S PEAK ON February 25,2021 time 14:15 7,447.14 MW  
 ( MEA SYSTEM'S PEAK ON February 25,2021 time 15:00 7,666.75 MW )

CLASS	Number of Customers	Kilowatt hours	Coincident Peak (MEA System Peak at time 15:00 )		Coincident Peak (Load Research System Peak at time 14:15)		Sector Diversified Demand		
			MW	Contribution (%)	MW	Contribution (%)	Max MW.	Date	Time
Residential	3,660,944	1,135,607,071	1,594.40	21.43	1,574.45	21.14	2,519.48	6 Feb 21	21:30
Small General Service	342,420	525,134,294	992.31	13.34	995.08	13.36	995.08	25 Feb 21	14:15
Medium General Service	24,033	627,534,154	1,728.10	23.23	1,744.55	23.43	1,750.83	25 Feb 21	14:00
Large General Service	2,490	1,302,774,858	2,769.39	37.22	2,777.90	37.30	2,781.23	25 Feb 21	14:30
Specific Business	3,499	113,368,402	188.27	2.53	187.57	2.52	216.18	8 Feb 21	20:45
Non Profit Organization	323	9,479,903	18.06	0.24	18.32	0.25	27.11	25 Feb 21	18:45
Public Lighting	-	39,097,671	0.00	0.00	0.00	0.00	141.06	-	-
Loss	-	74,342,551	149.74	2.01	149.28	2.00	149.74	25 Feb 21	14:15
TOTAL	4,033,709	3,827,338,904	7,440.26	100.00	7,447.14	100.00	7,447.14	25 Feb 21	14:15

Table 1-2

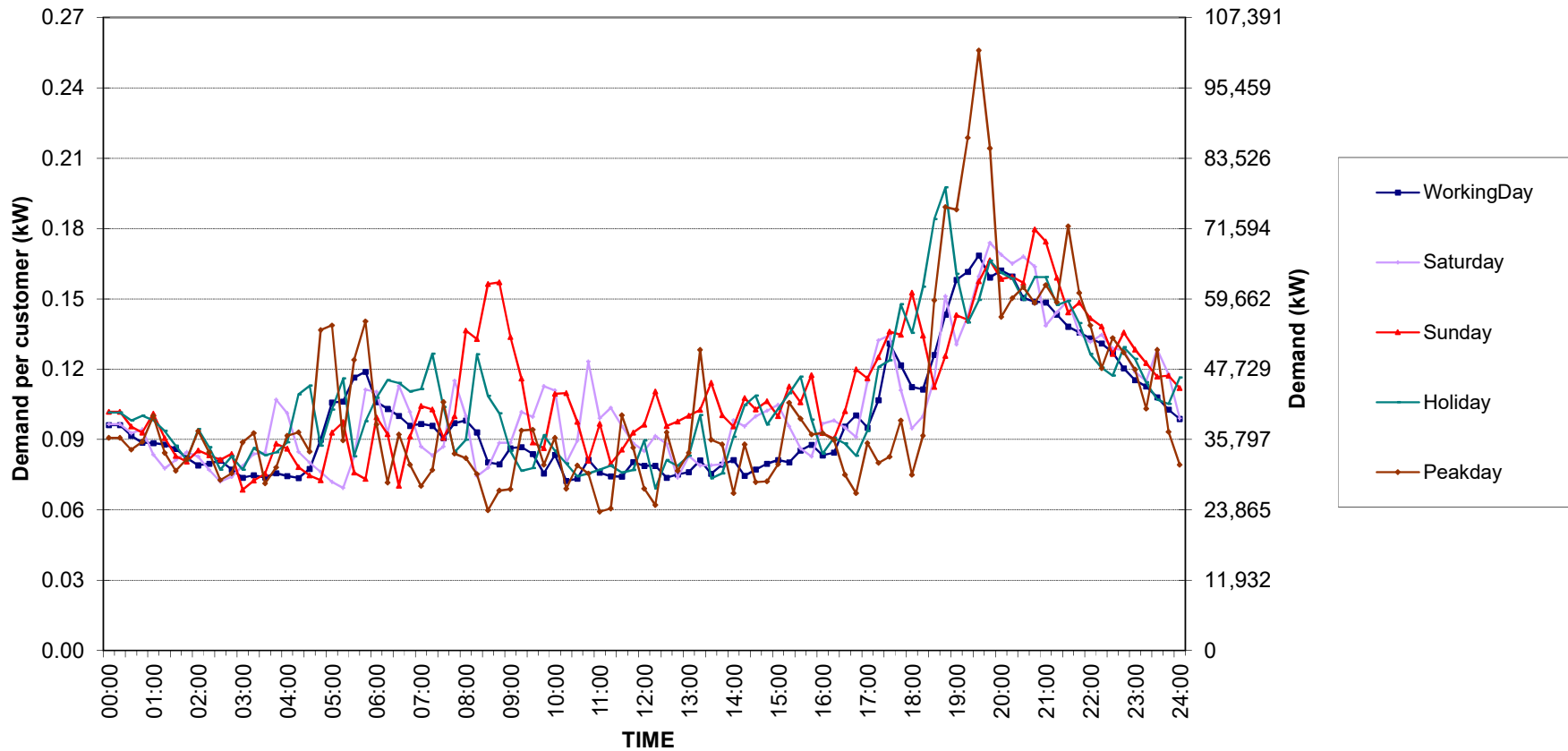
Number of sample customers on February, 2021

CLASS	Number of sample customers (Target)	Number of sample customers (Collected)
Residential	171	171
Small General Service	258	258
Medium General Service	165	165
Large General Service	284	284
Specific Business	74	74
Non-profit Organization	50	50
TOTAL	1,002	1,002

Residential ( Energy Consumption less than 150 kWh per month )

Date: 1 February 2021 to 28 February 2021

Number of sample customers = 52

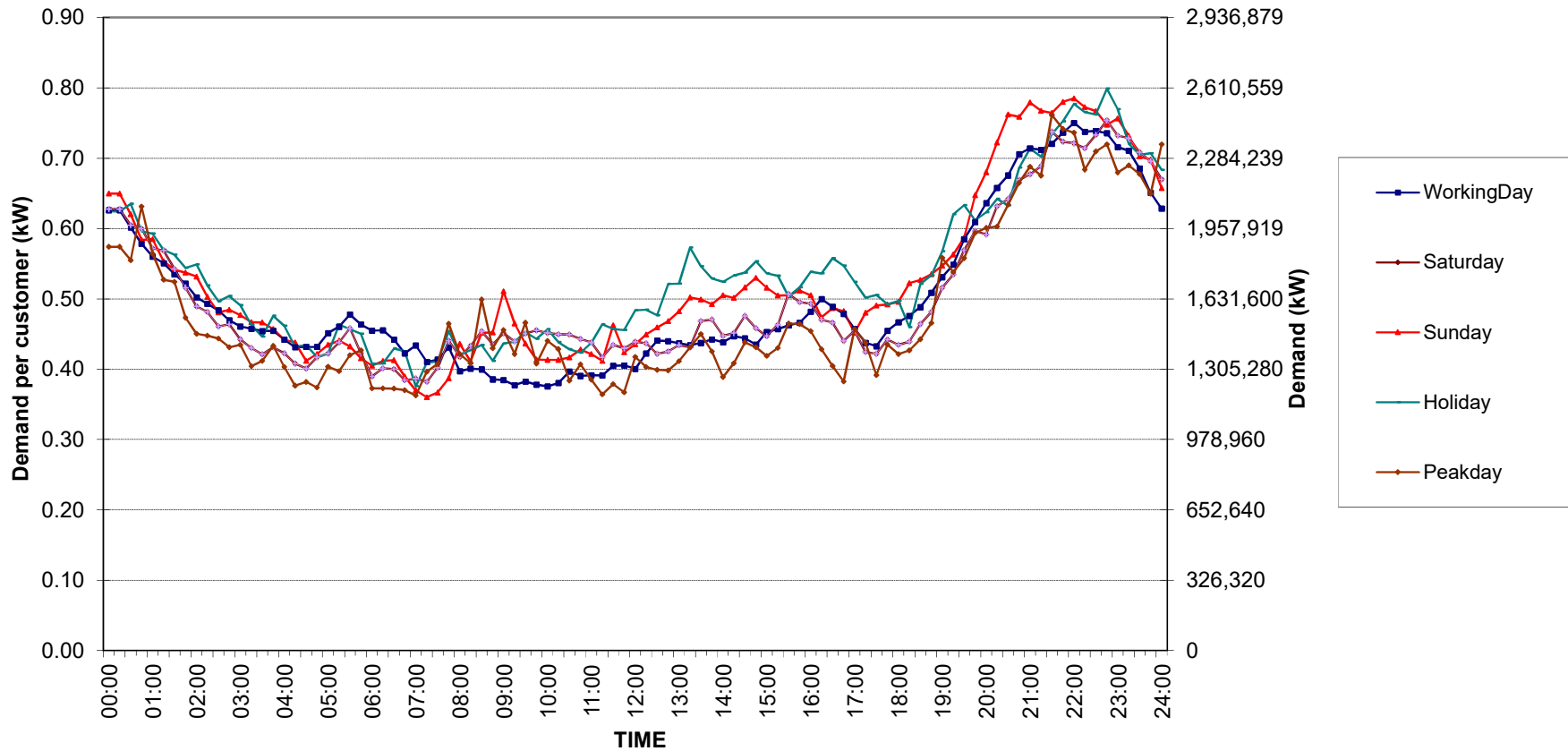


กราฟรูปที่ 1

Residential ( Energy Consumption more than 150 kWh per month )

Date: 1 February 2021 to 28 February 2021

Number of sample customers = 119

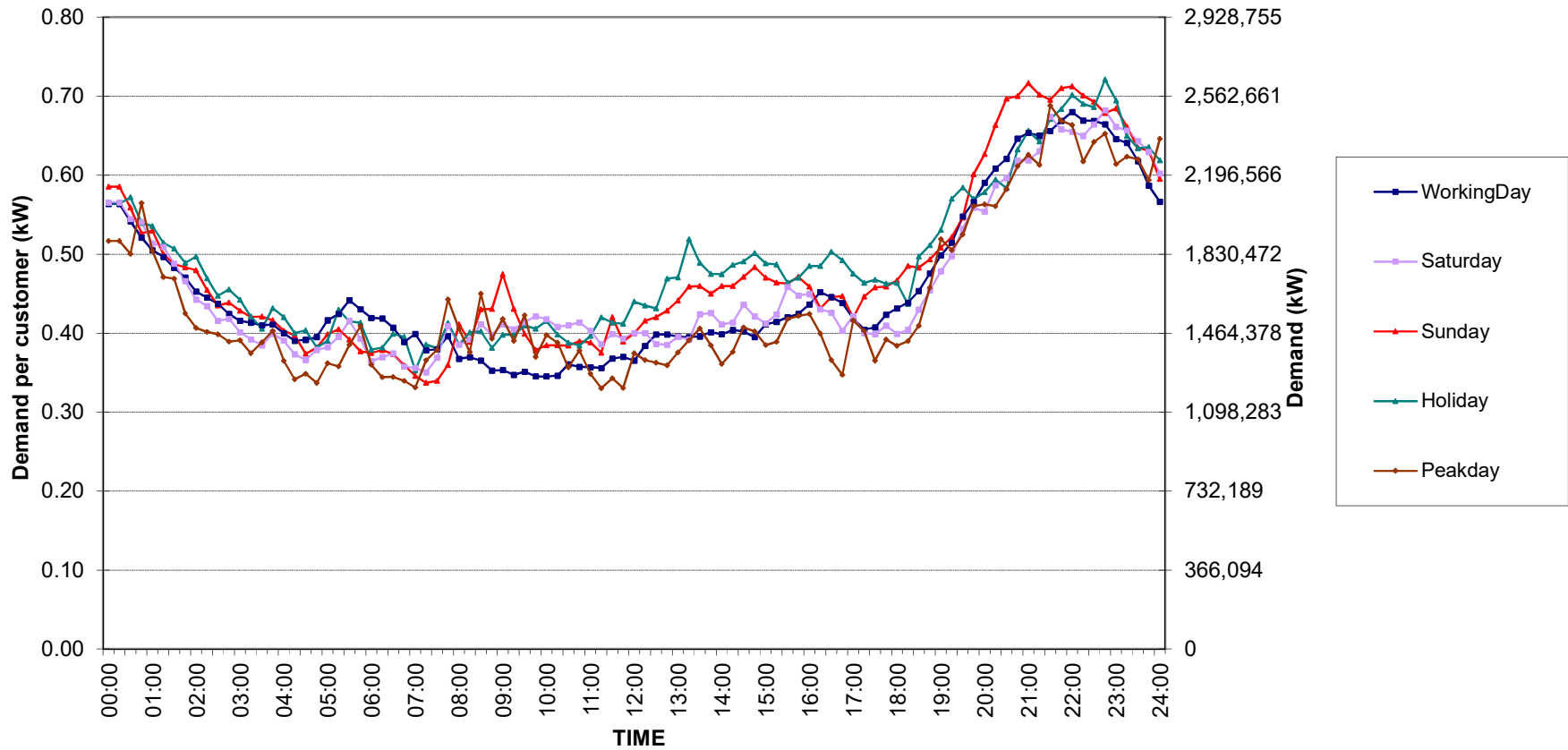


กราฟรูปที่ 2

### Residential Load Profile

Date: 1 February 2021 to 28 February 2021

Number of sample customers = 171

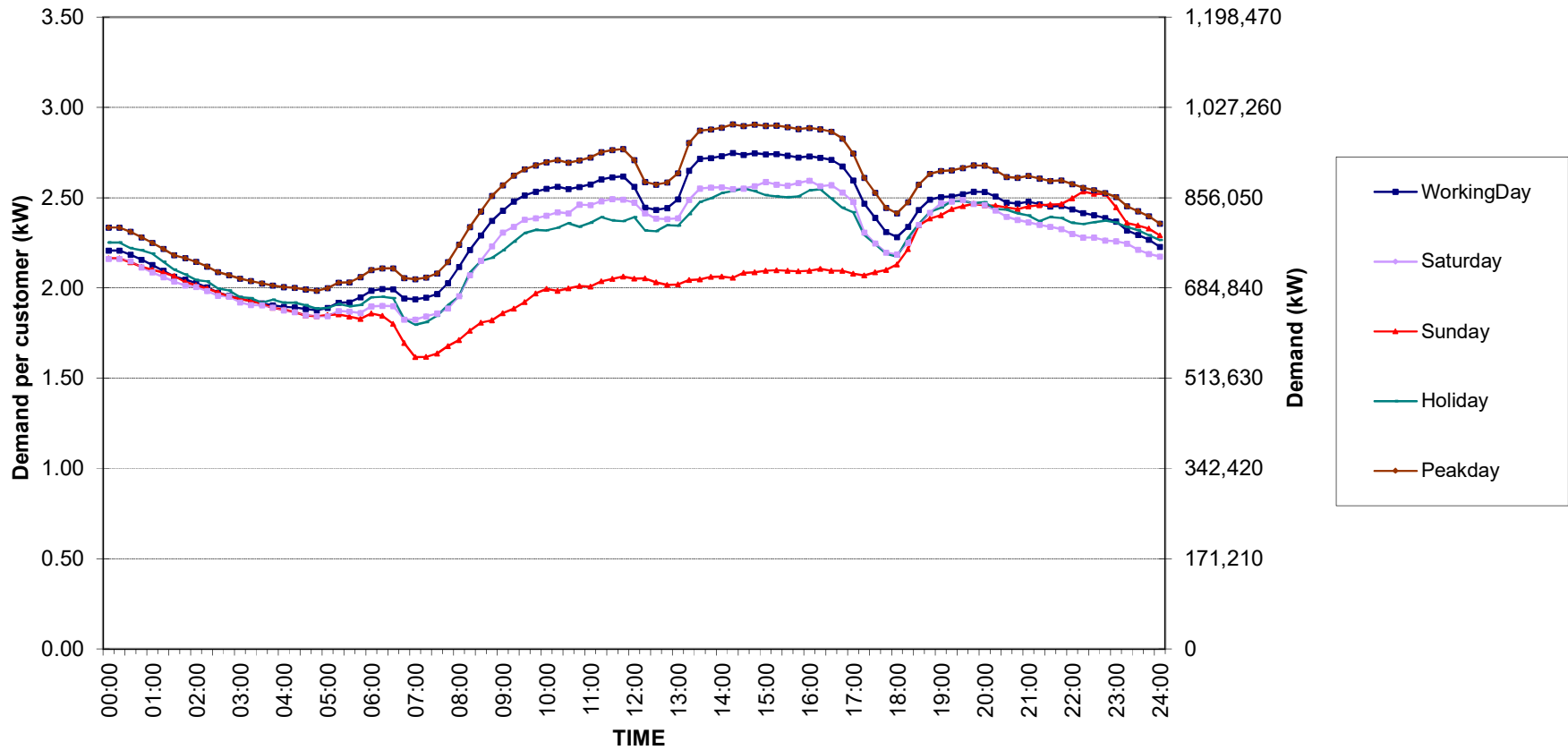


กราฟรูปที่ 3

### Small General Services Load Profile

Date: 1 February 2021 to 28 February 2021

Number of sample customers = 258

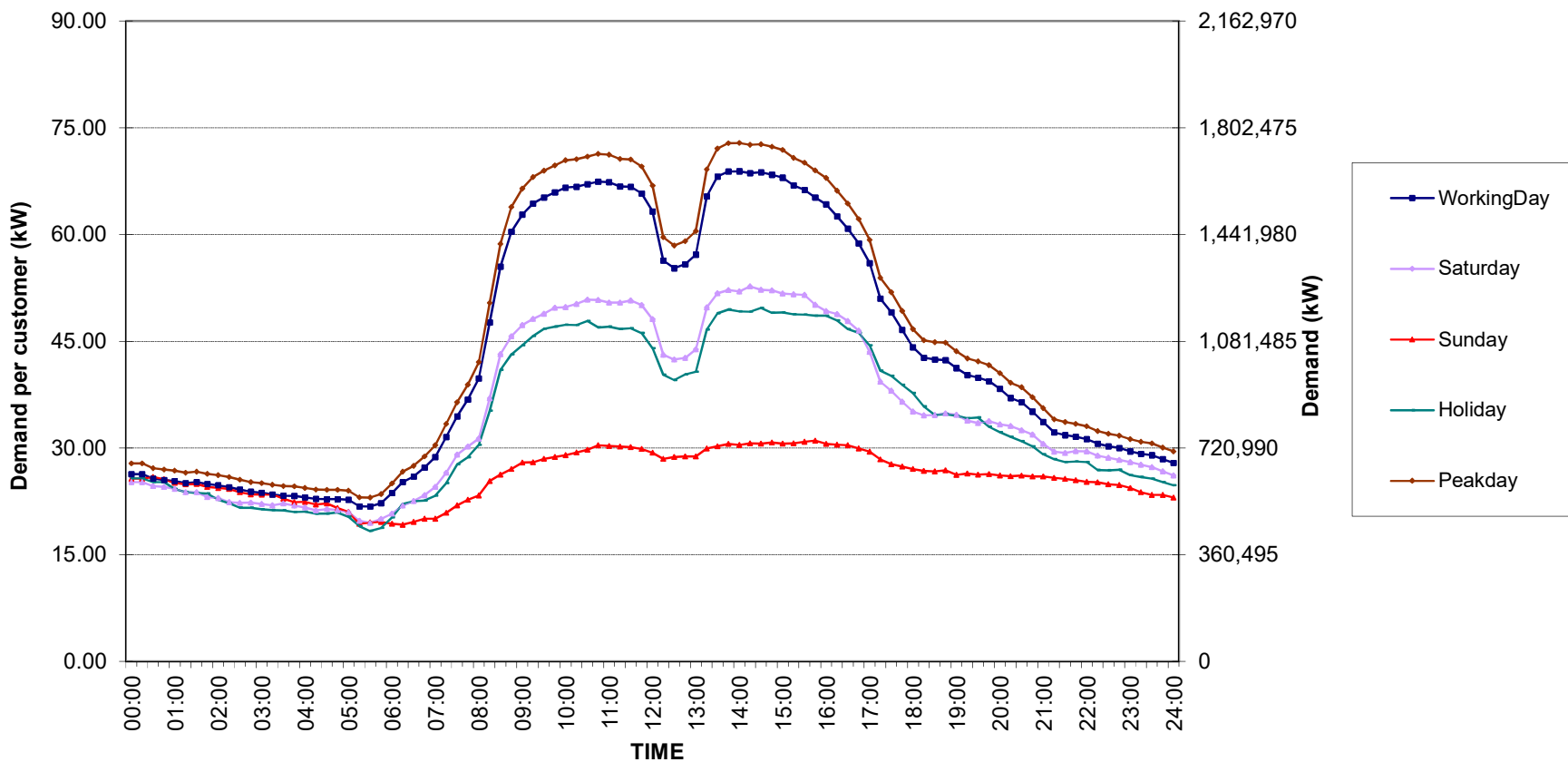


กราฟรูปที่ 4

### Medium General Services Load Profile

Date: 1 February 2021 to 28 February 2021

Number of sample customers = 165

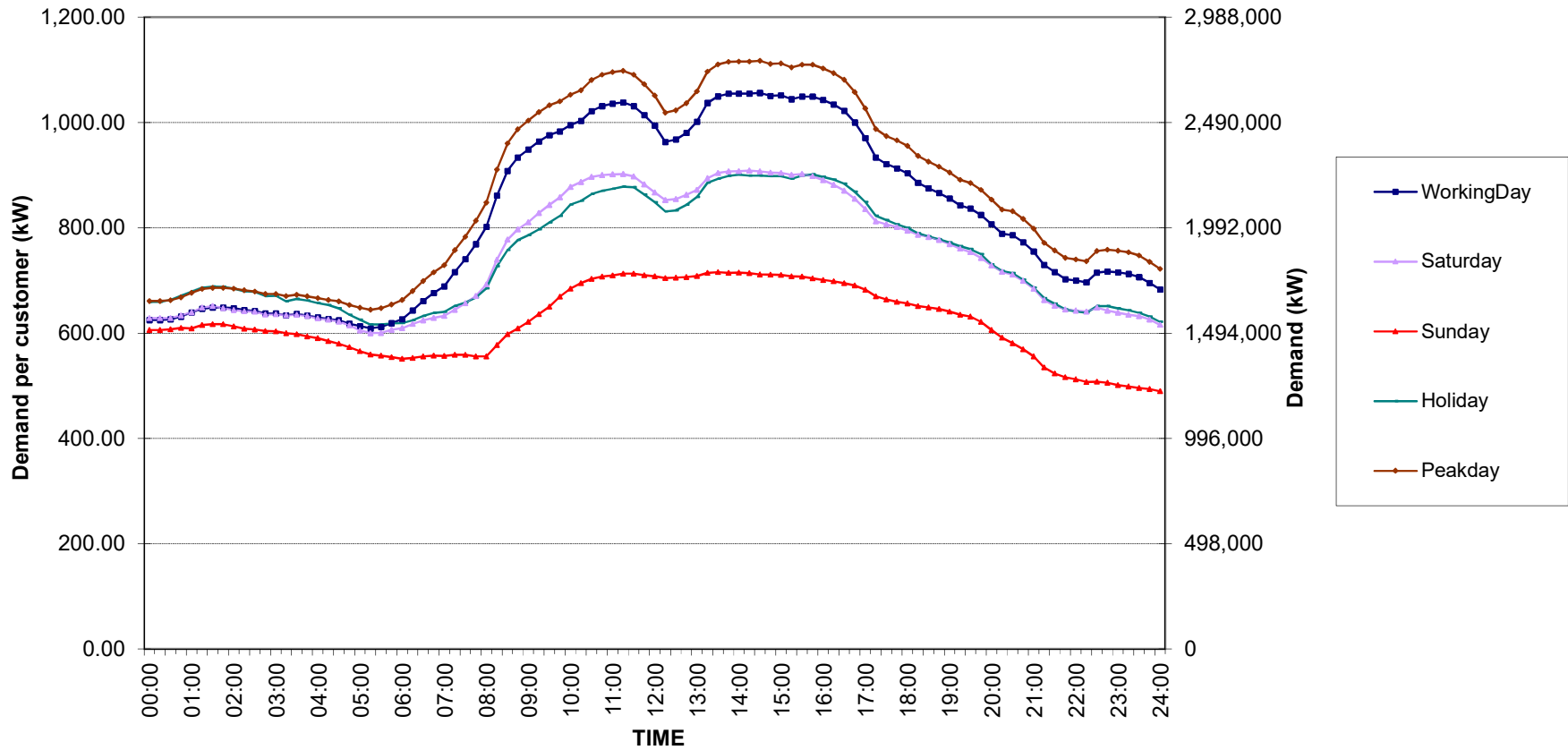


กราฟรูปที่ 5

# Large General Services Load Profile

Date: 1 February 2021 to 28 February 2021

Number of sample customers = 284

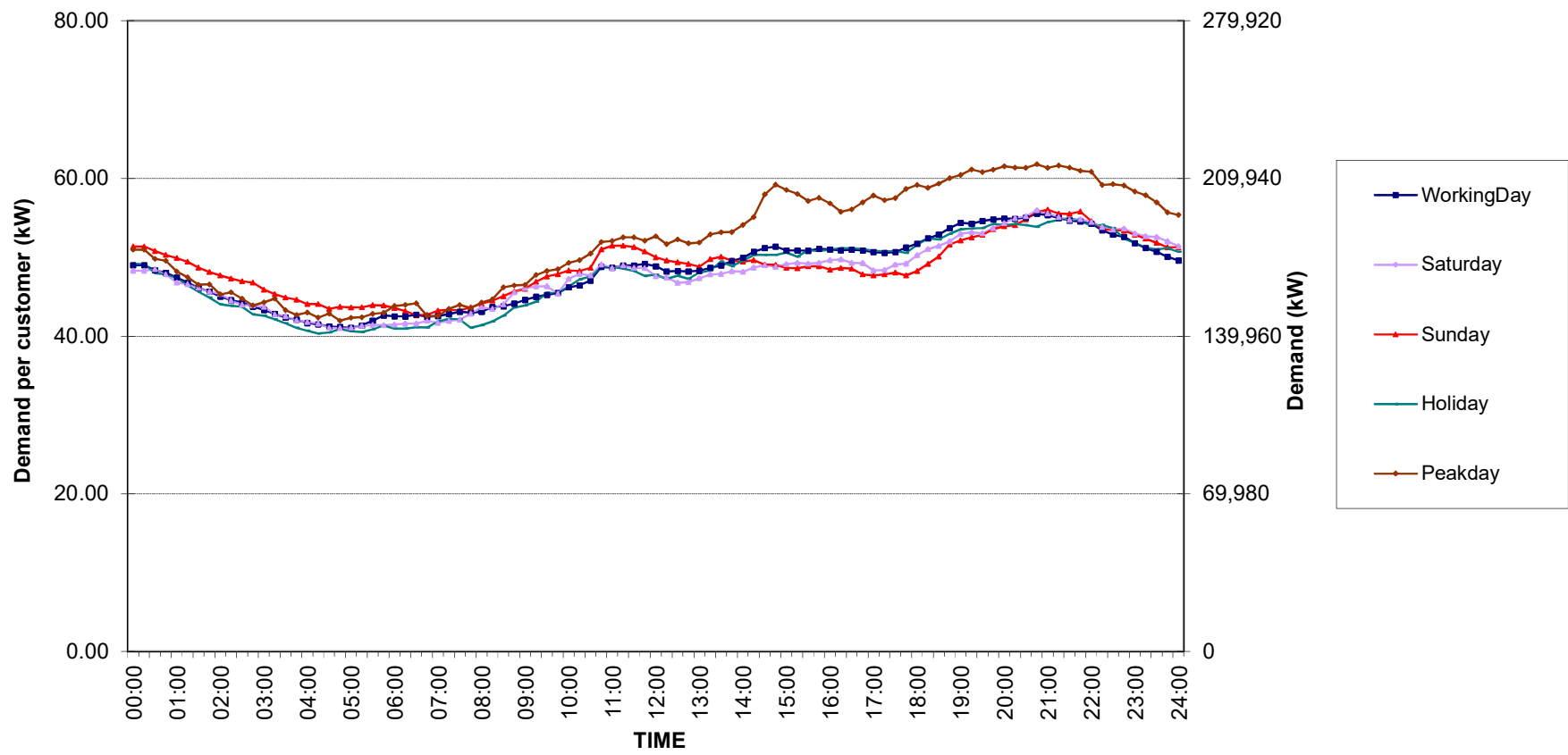


กราฟรูปที่ 6

### Specific Business Load Profile

Date: 1 February 2021 to 28 February 2021

Number of sample customers = 74

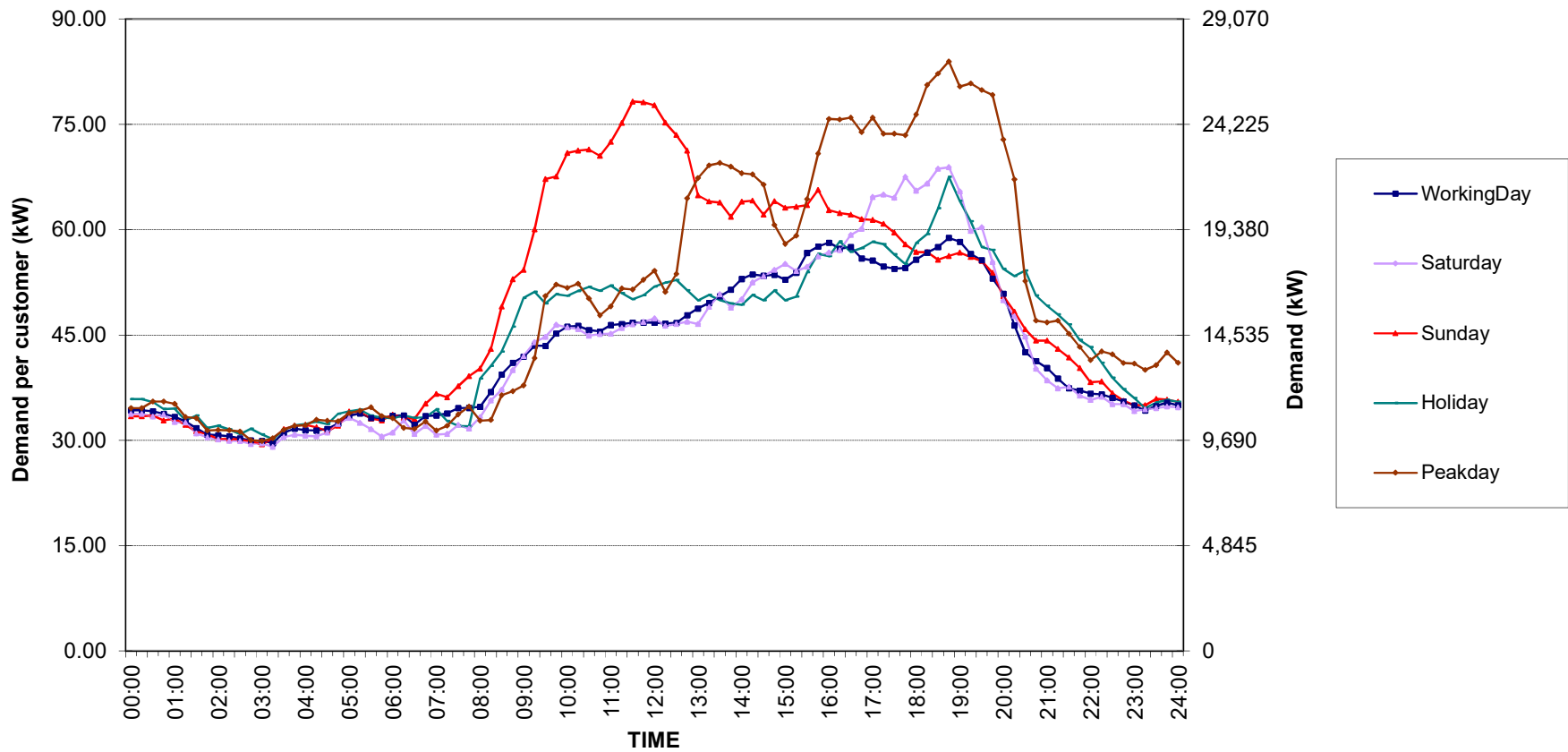


กราฟรูปที่ 7

### Non-profit organizations Load Profile

Date: 1 February 2021 to 28 February 2021

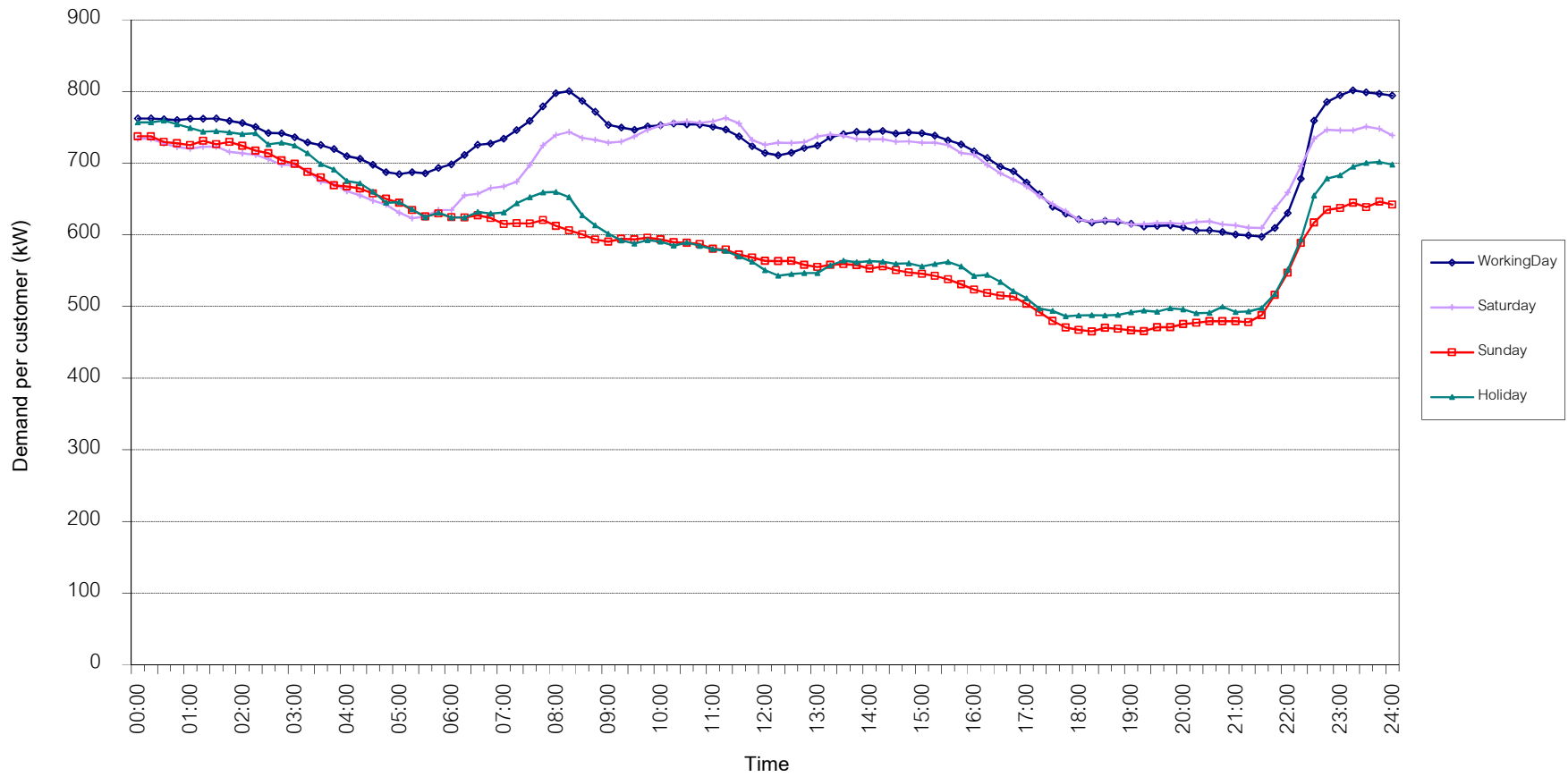
Number of sample customers = 50



กราฟรูปที่ 8

TSIC 31 (Food Processing) Load Profile  
Date: 1 February 2021 to 28 February 2021

Number of sample customers = 32

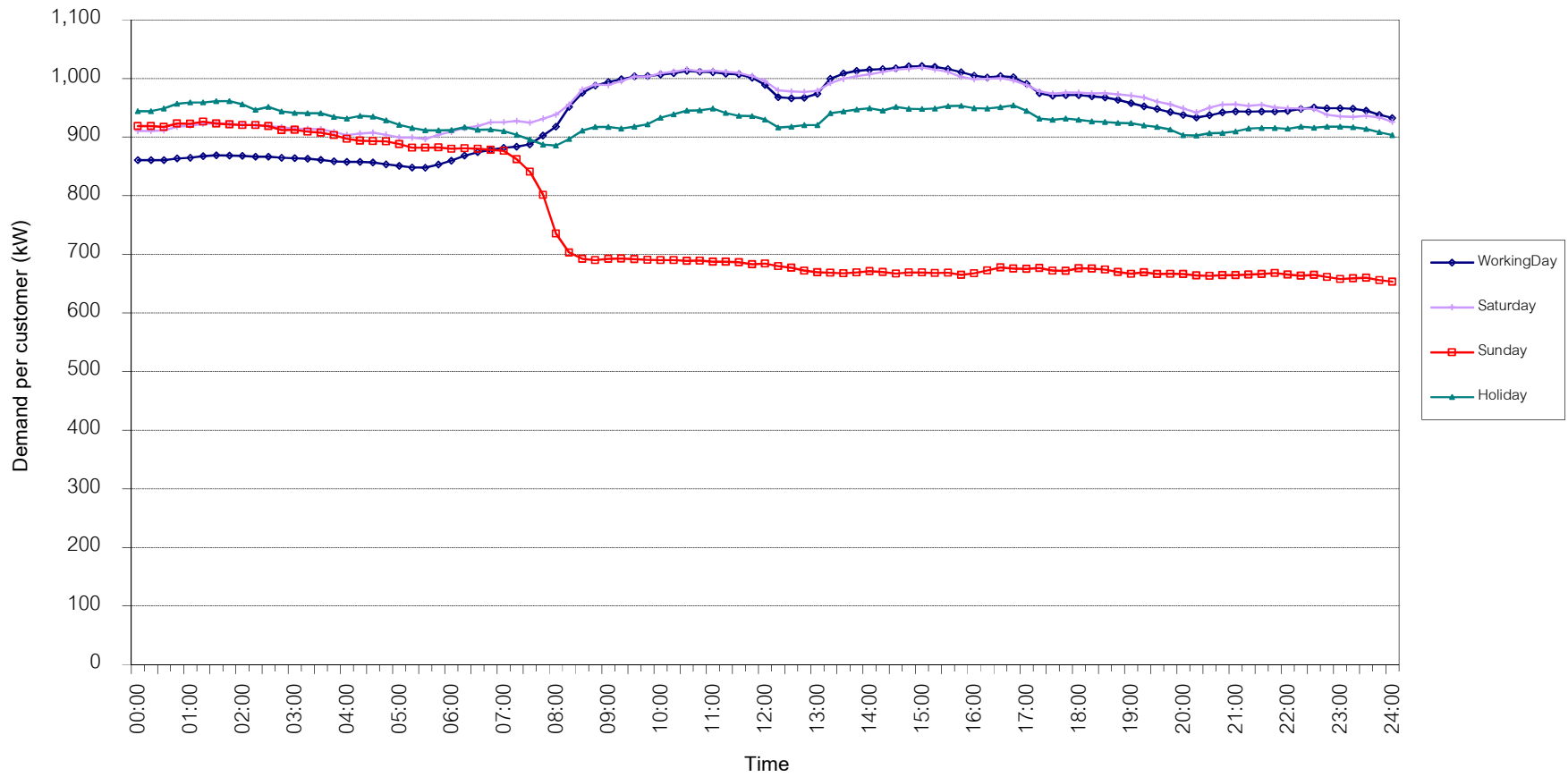


กราฟรูปที่ 9

TSIC 32 (Textiles) Load Profile

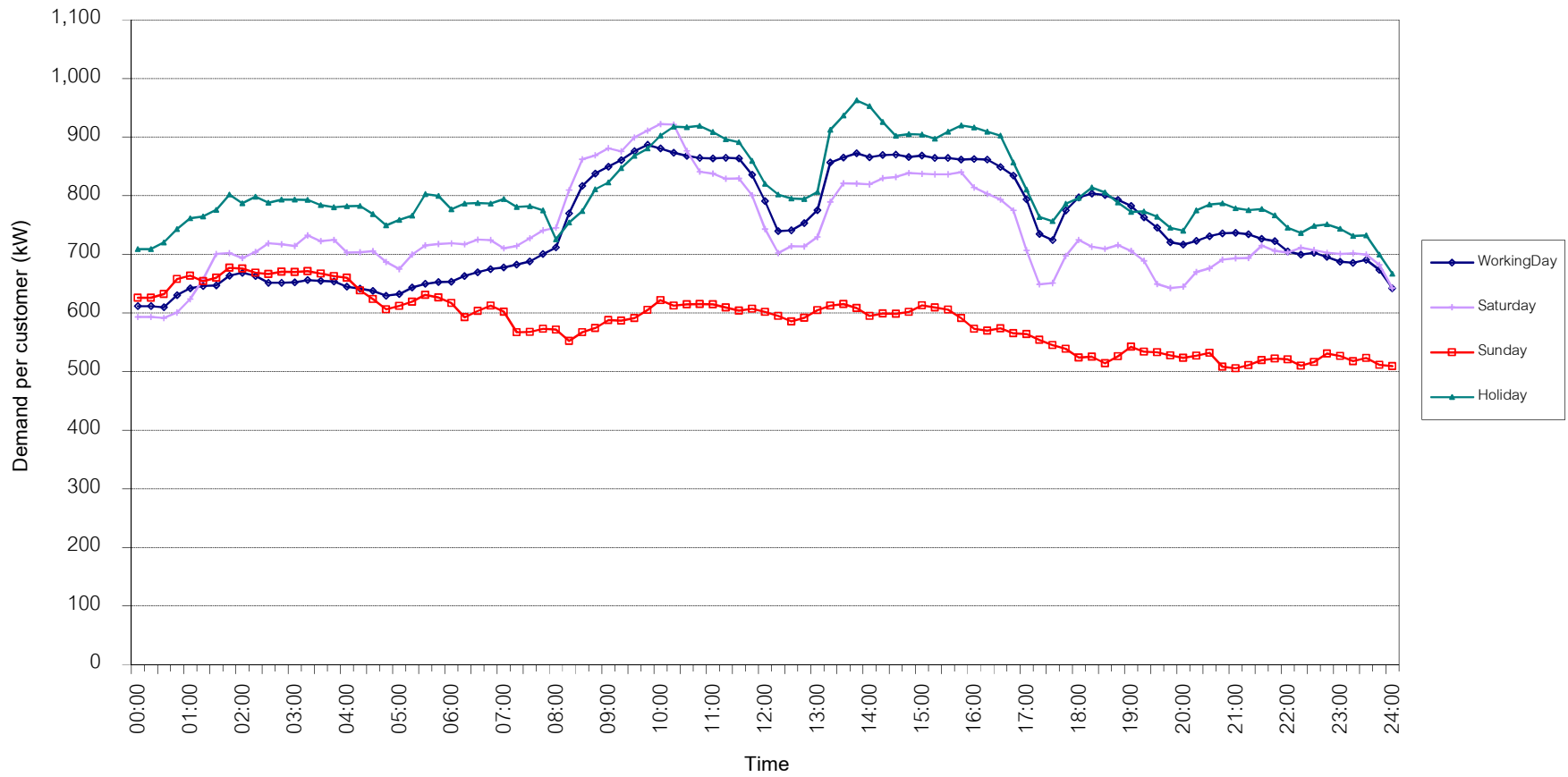
Date: 1 February 2021 to 28 February 2021

Number of sample customers = 67



กราฟรูปที่ 10

TSIC 34 (Paper & Printing) Load Profile  
Date: 1 February 2021 to 28 February 2021  
Number of sample customers = 12

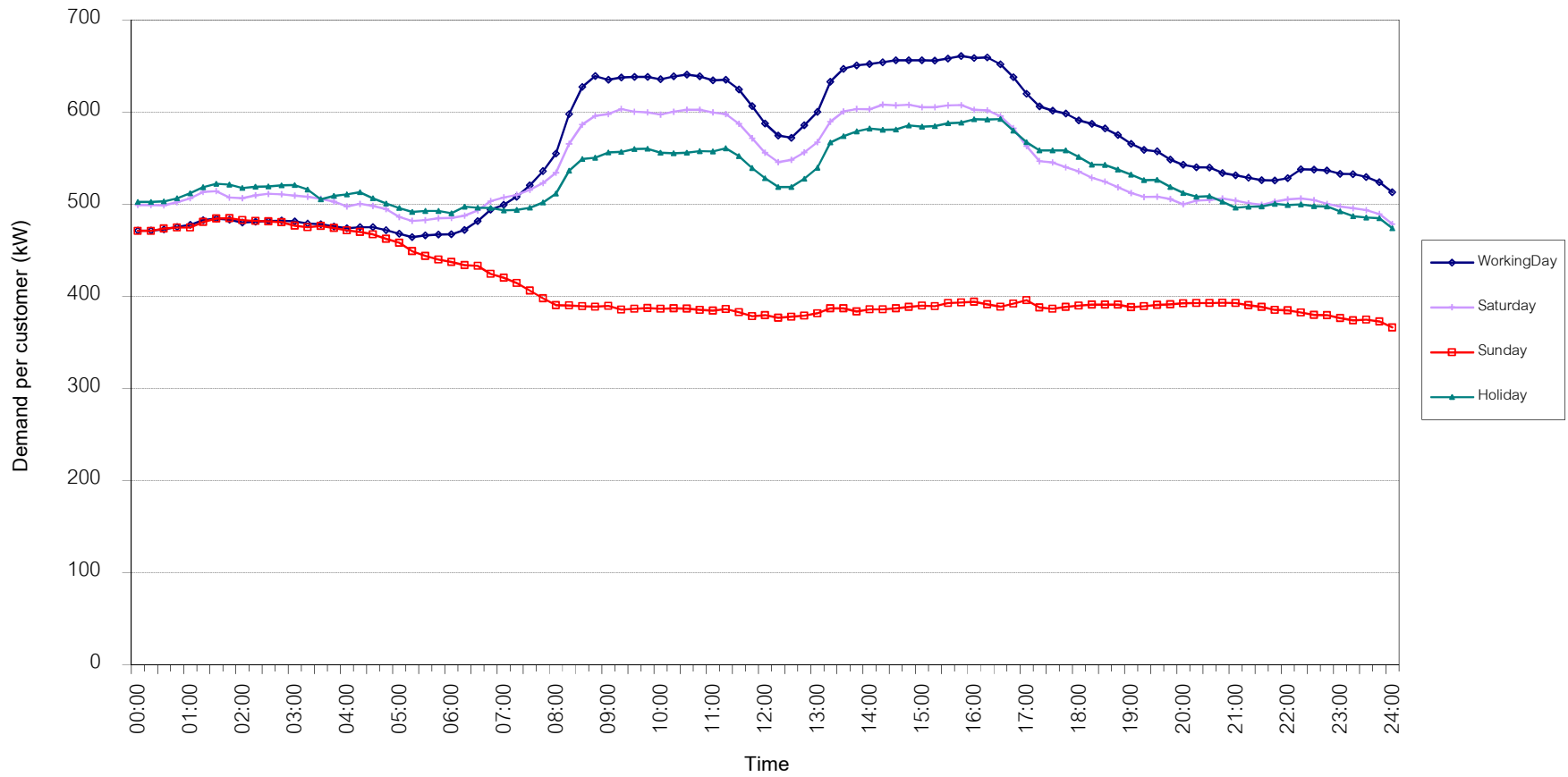


กราฟรูปที่ 11

TSIC 35 (Chemical & Petroleum) Load Profile

Date: 1 February 2021 to 28 February 2021

Number of sample customers = 75

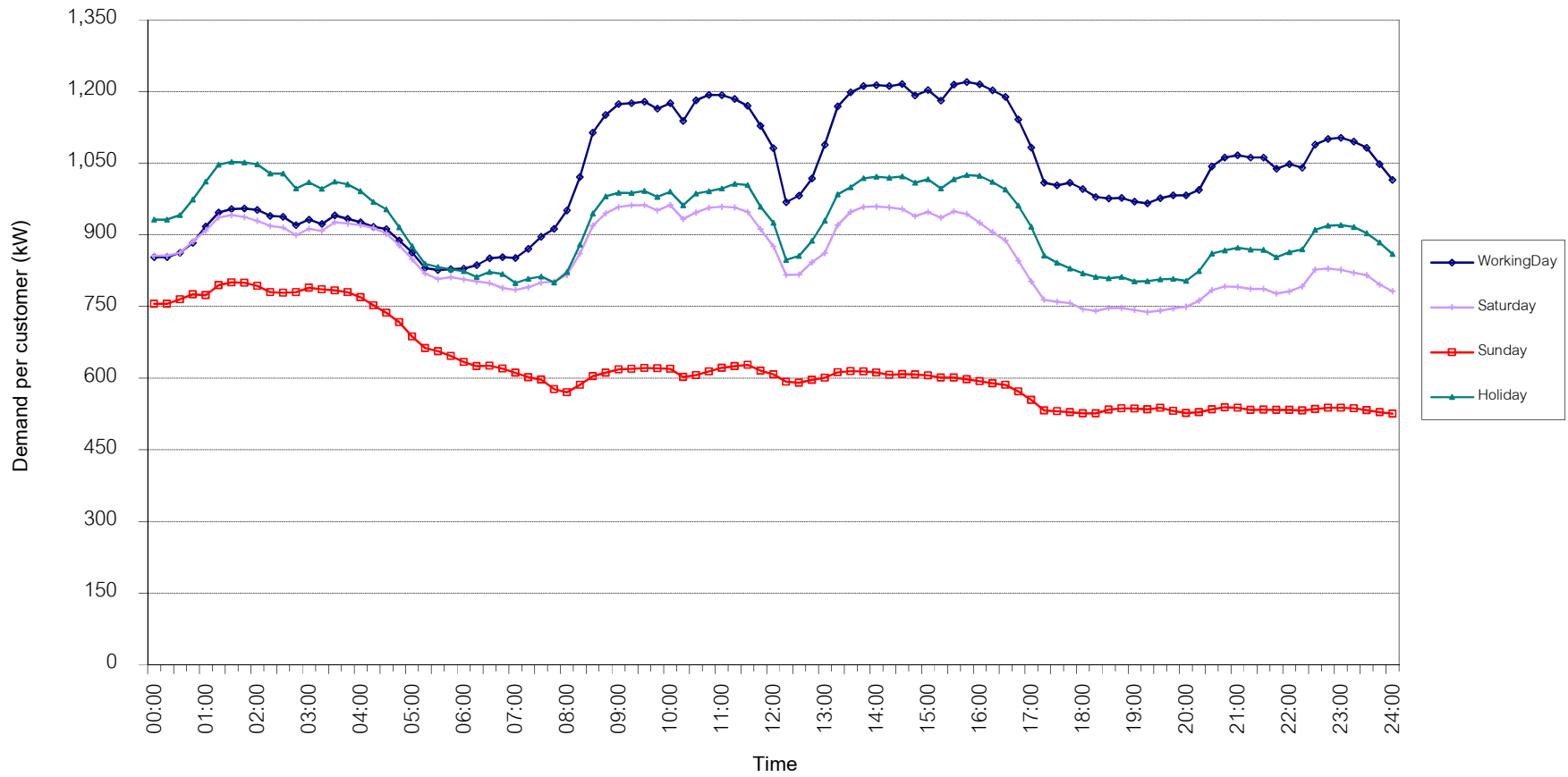


กราฟรูปที่ 12

TSIC 38 (Fabricated Metal Products) Load Profile

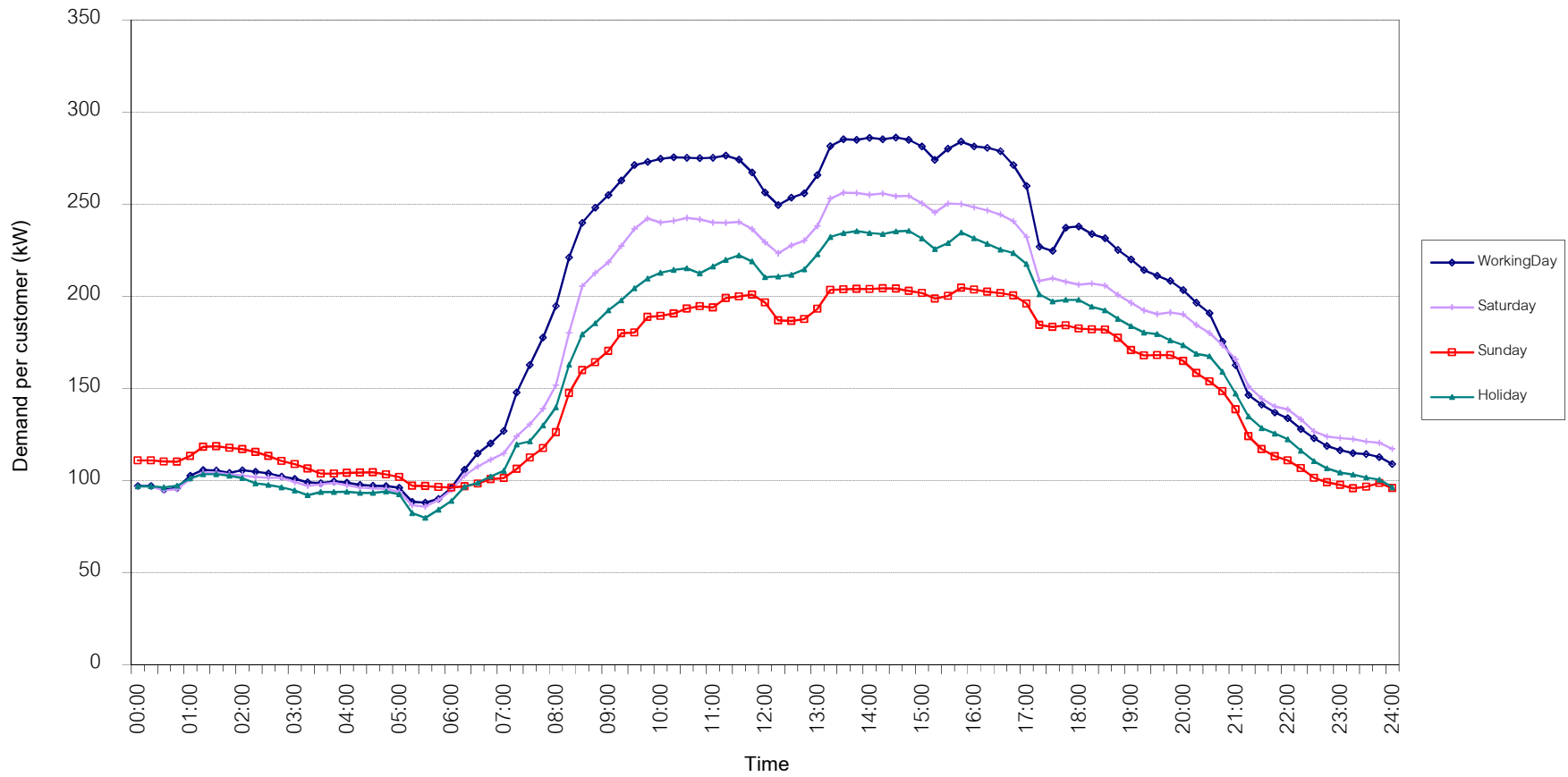
Date: 1 February 2021 to 28 February 2021

Number of sample customers = 62



กราฟรูปที่ 13

TSIC 61 (Wholesale Trade) Load Profile  
Date: 1 February 2021 to 28 February 2021  
Number of sample customers = 48

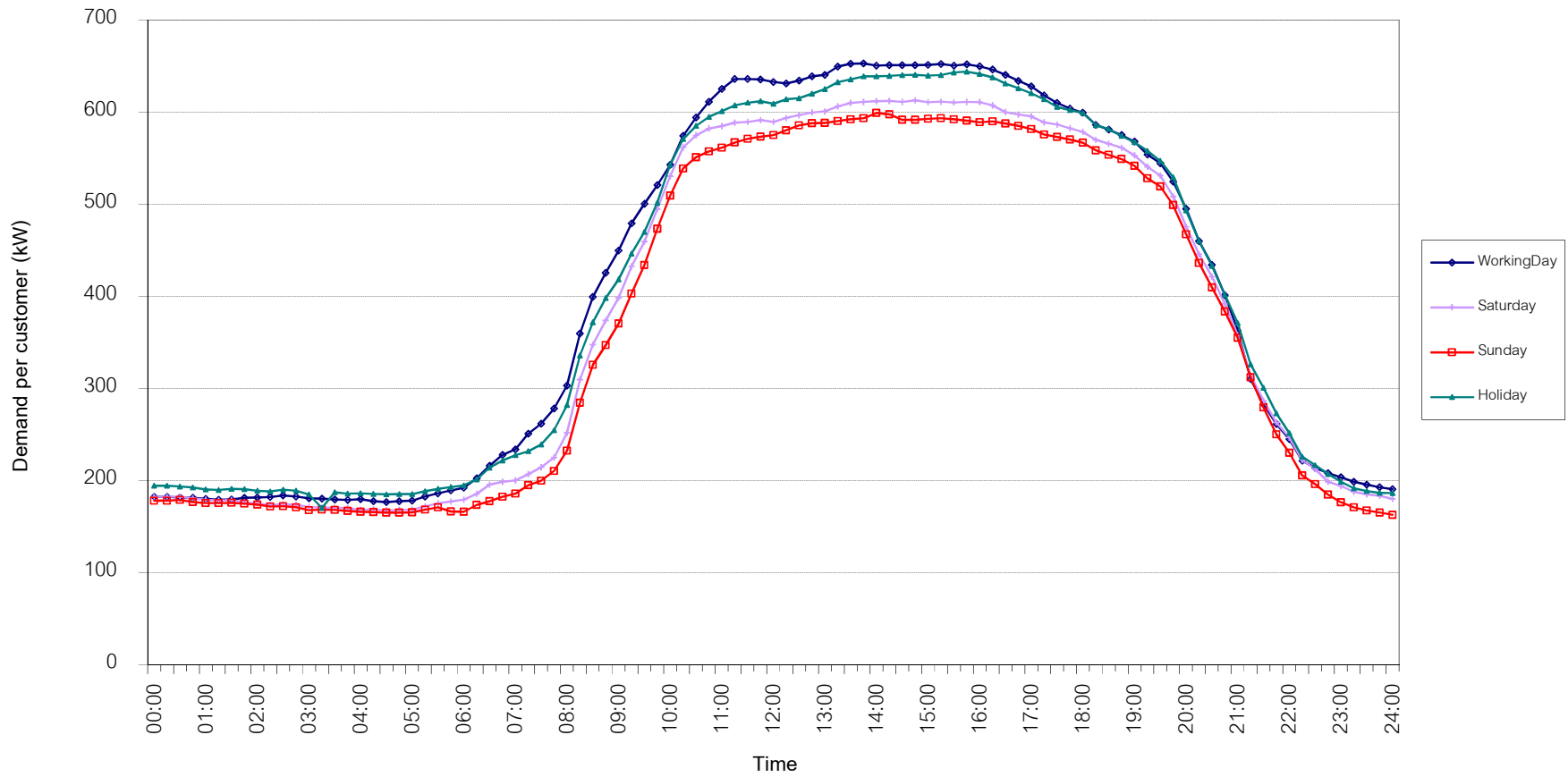


กราฟรูปที่ 14

TSIC 62 (Retail Trade) Load Profile

Date: 1 February 2021 to 28 February 2021

Number of sample customers = 93

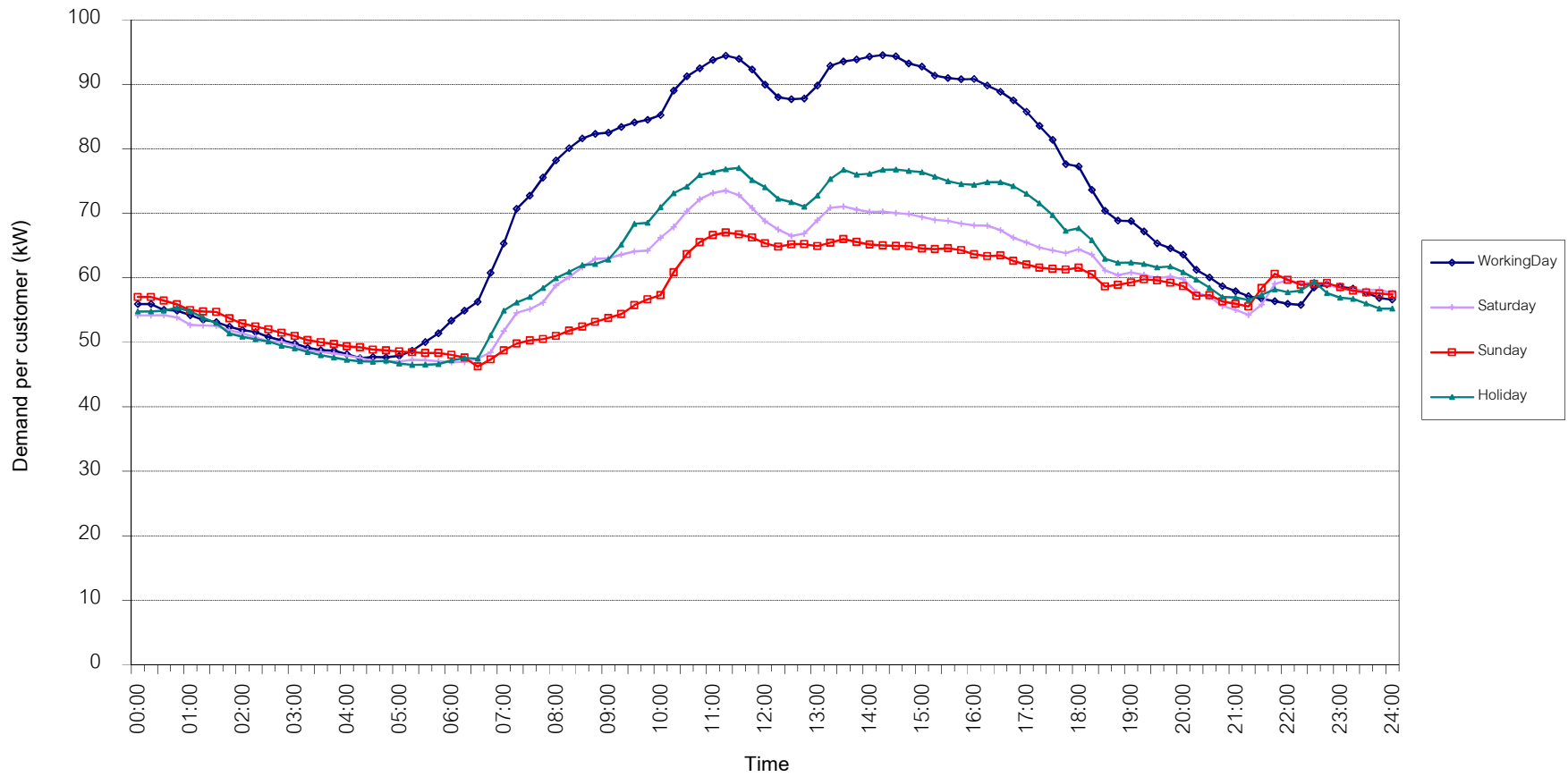


กราฟรูปที่ 15

TSIC 63 (Hotels and restaurants) Load Profile

Date: 1 February 2021 to 28 February 2021

Number of sample customers = 117

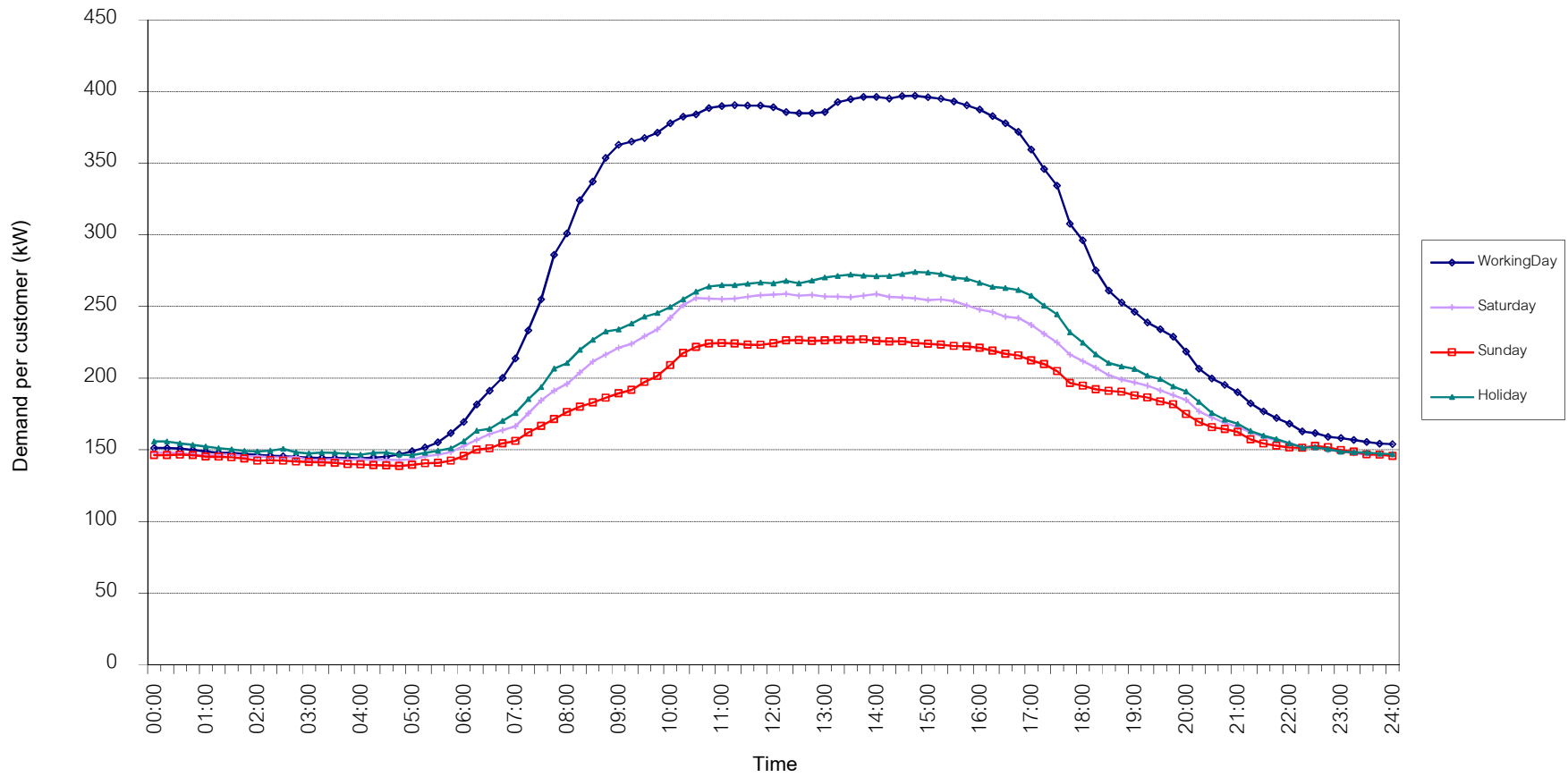


กราฟรูปที่ 16

TSIC 83 (Real Estate) Load Profile

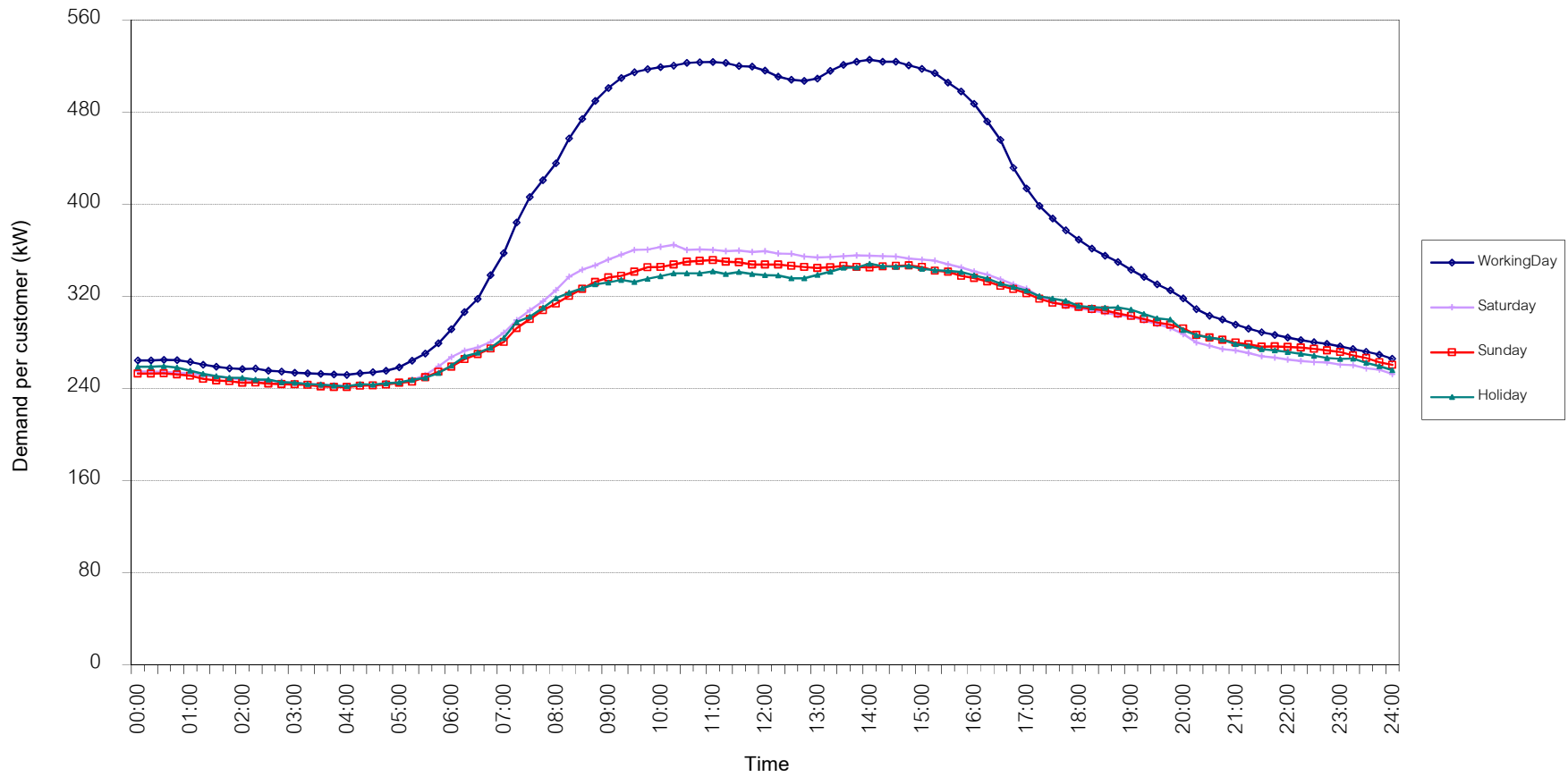
Date: 1 February 2021 to 28 February 2021

Number of sample customers = 47



กราฟรูปที่ 17

TSIC 93 (Social Services) Load Profile  
Date: 1 February 2021 to 28 February 2021  
Number of sample customers = 27



กราฟรูปที่ 18

### MEA's System Load Profile

Peak Day 25 Feb, 2021 at 15:00

