

ข้อมูลการศึกษาลักษณะการใช้ไฟฟ้า

เดือน กุมภาพันธ์ 2561

Table 1-1

COINCIDENT WITH LOAD RESEARCH SYSTEM'S PEAK ON February 22,2018 time 14:15 7,539.35 MW
 (MEA SYSTEM'S PEAK ON February 22,2018 time 14:30 8,013.77 MW)

CLASS	Number of Customers	Kilowatt hours	Coincident Peak (MEA System Peak at time 14:30)		Coincident Peak (Load Research System Peak at time 14:15)		Sector Diversified Demand		
			MW	Contribution (%)	MW	Contribution (%)	Max MW.	Date	Time
Residential	3,162,631	965,575,367	1,449.14	19.42	1,465.11	19.43	2,620.33	21 Feb 18	21:15
Small General Service	501,549	605,102,109	1,433.68	19.21	1,507.24	19.99	1,566.31	22 Feb 18	10:45
Medium General Service	22,780	656,611,193	1,442.54	19.33	1,437.46	19.07	1,611.30	26 Feb 18	14:30
Large General Service	2,359	1,401,060,098	2,760.61	37.00	2,756.95	36.57	2,919.15	21 Feb 18	14:00
Specific Business	3,097	158,000,623	321.90	4.31	319.22	4.23	349.17	22 Feb 18	19:30
Non Profit Organization	323	9,615,584	34.29	0.46	34.16	0.45	39.40	26 Feb 18	09:00
Public Lighting	-	37,279,312	0.00	0.00	0.00	0.00	108.76	-	-
Loss	-	9,486,493	19.22	0.26	19.21	0.25	19.22	22 Feb 18	14:30
TOTAL	3,692,739	3,842,730,779	7,461.37	100.00	7,539.35	100.00	7,539.35	22 Feb 18	14:15

Table 1-2

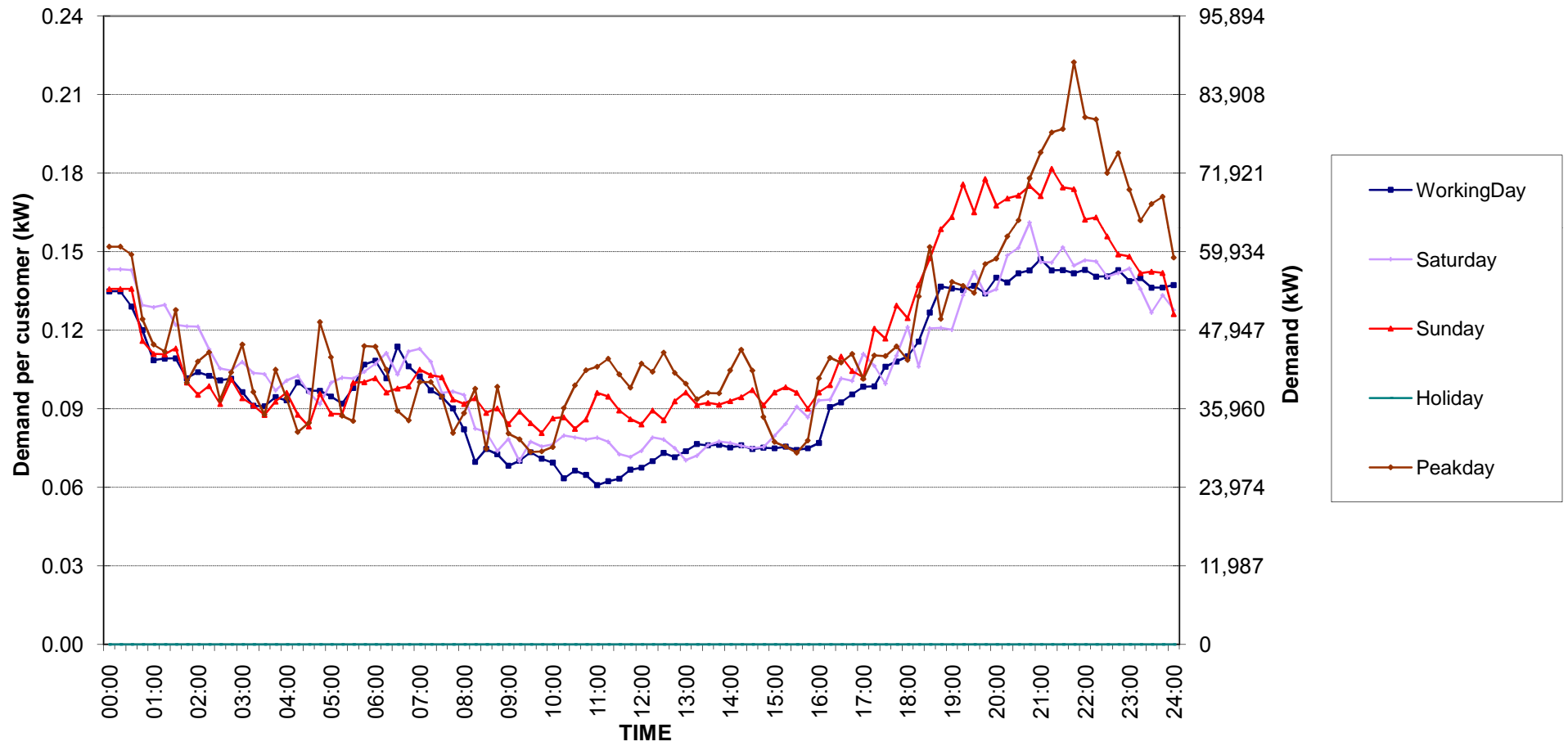
Number of sample customers on February, 2018

CLASS	Number of sample customers (Target)	Number of sample customers (Collected)
Residential	171	171
Small General Service	258	258
Medium General Service	165	165
Large General Service	284	284
Specific Business	74	74
Non-profit Organization	50	50
TOTAL	1,002	1,002

Residential (Energy Consumption less than 150 kWh per month)

Date: 1 Feb, 2018 to 28 Feb, 2018

Number of sample customers = 52

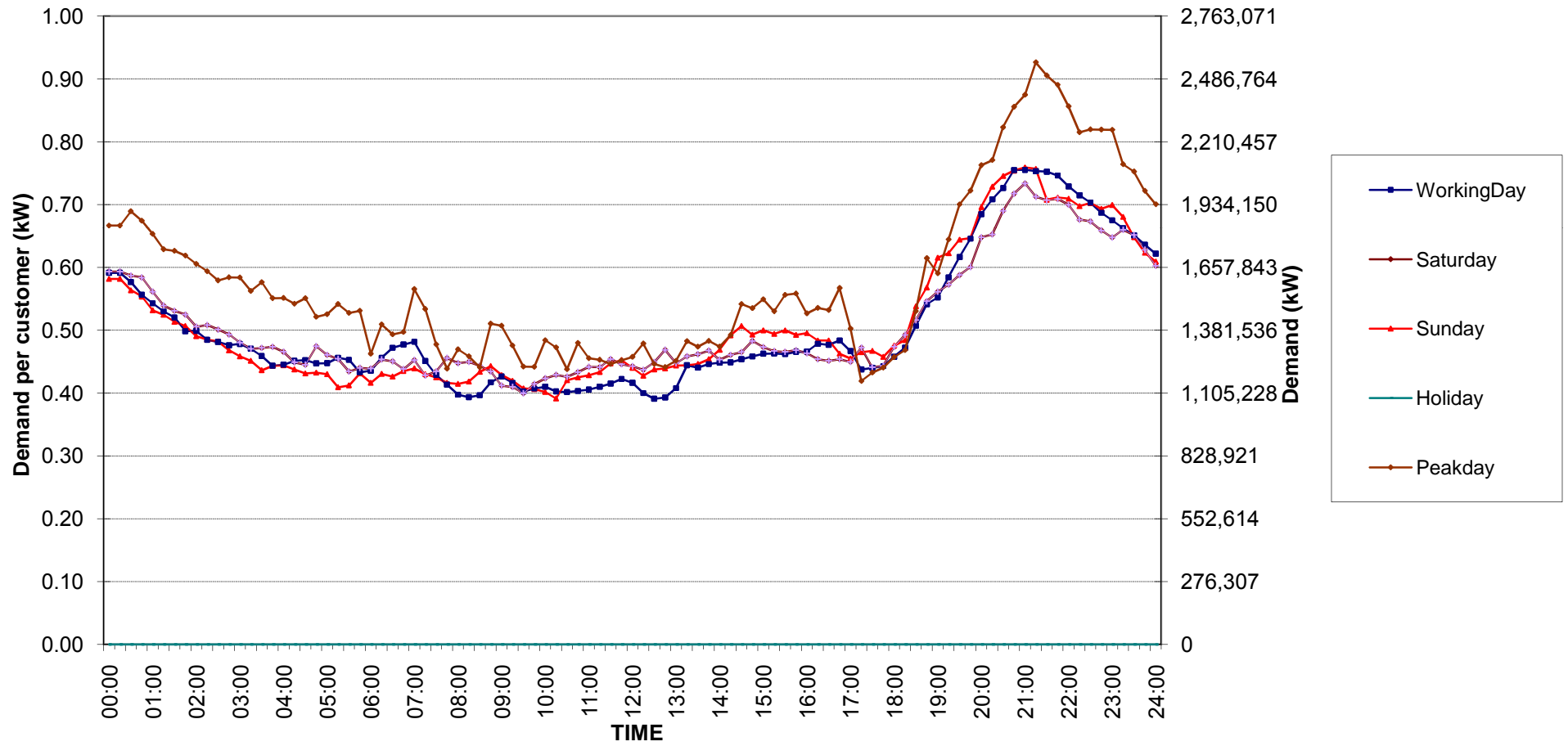


กราฟรูปที่ 1

Residential (Energy Consumption more than 150 kWh per month)

Date: 1 Feb, 2018 to 28 Feb, 2018

Number of sample customers = 119

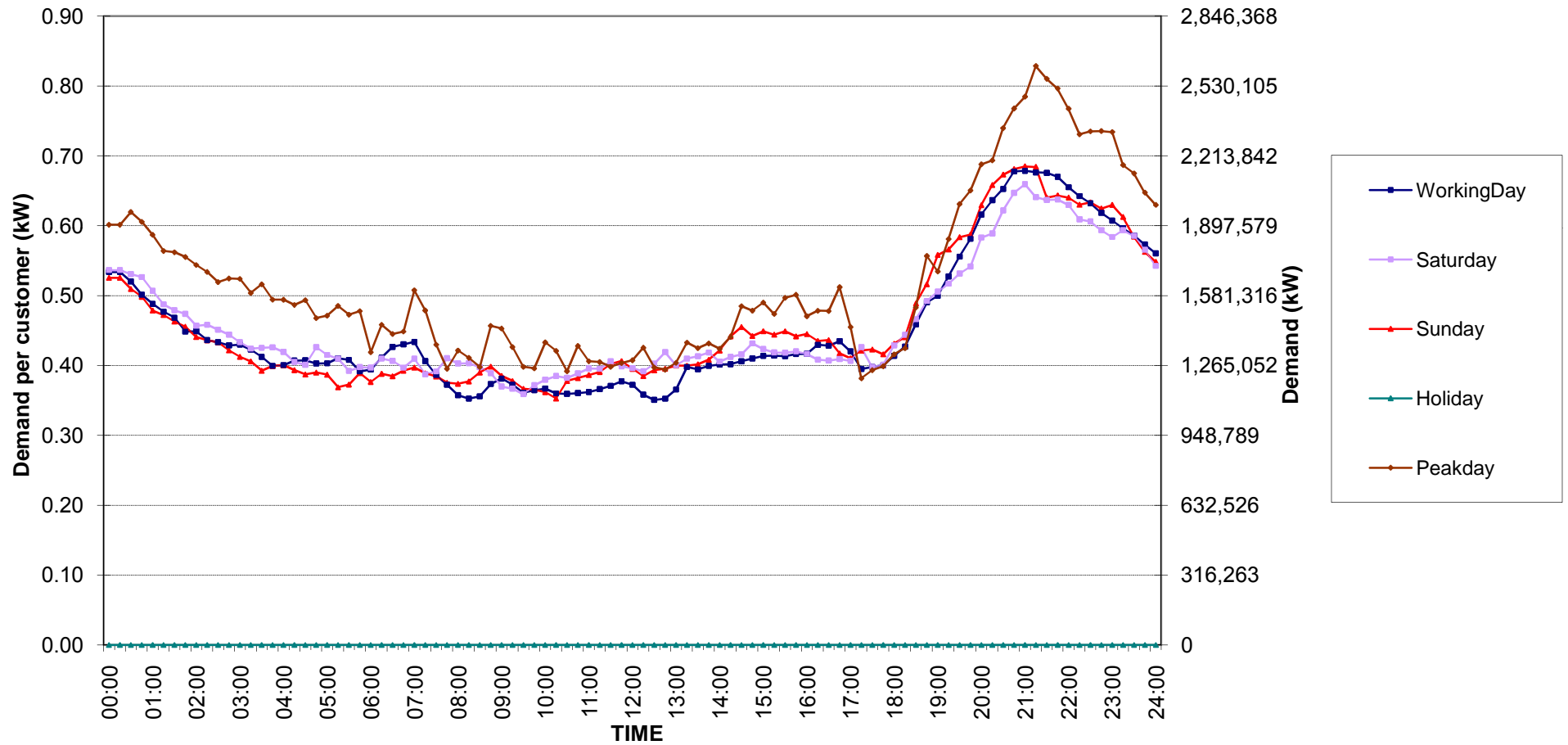


กราฟรูปที่ 2

Residential Load Profile

Date: 1 Feb, 2018 to 28 Feb, 2018

Number of sample customers = 171

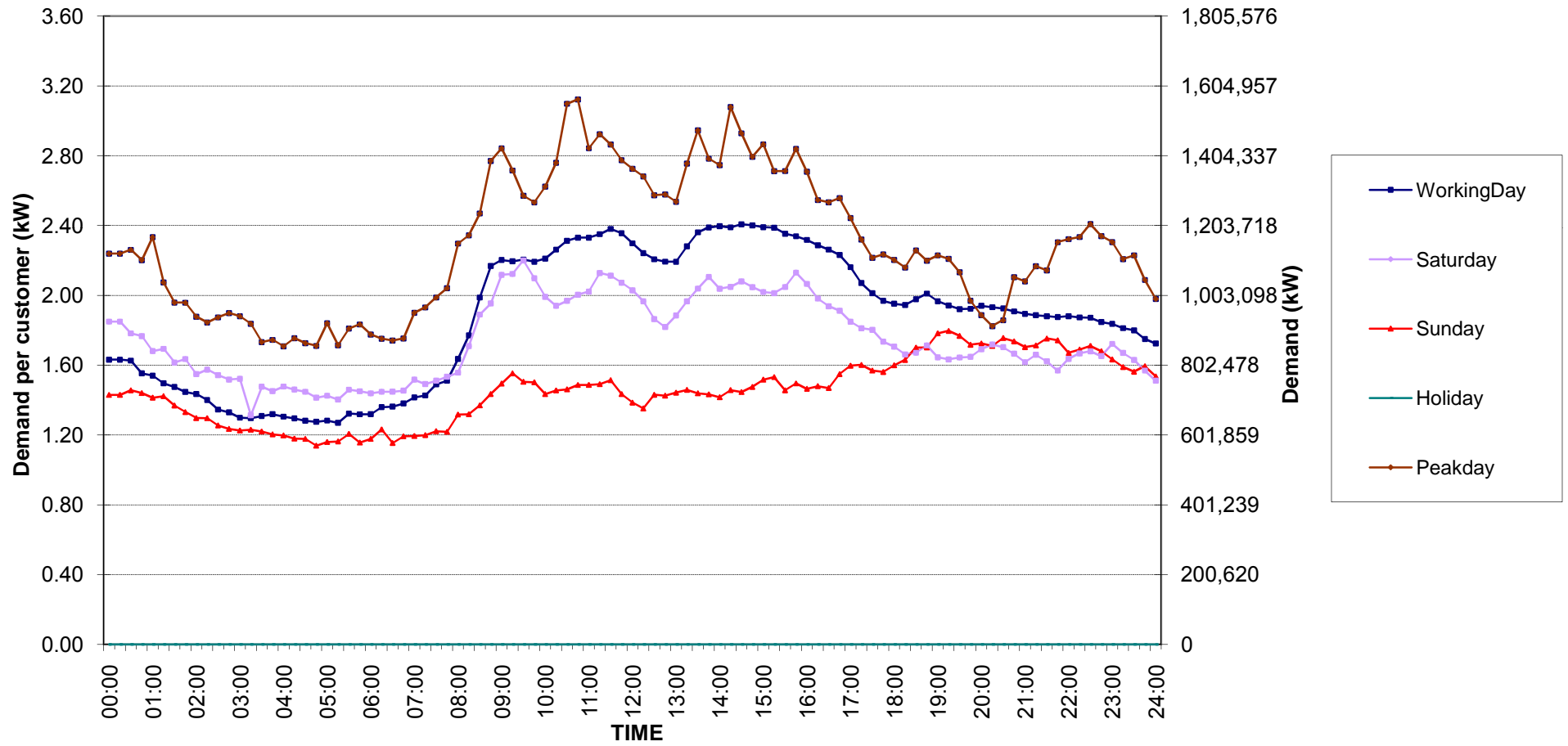


กราฟรูปที่ 3

Small General Services Load Profile

Date: 1 Feb, 2018 to 28 Feb, 2018

Number of sample customers = 258

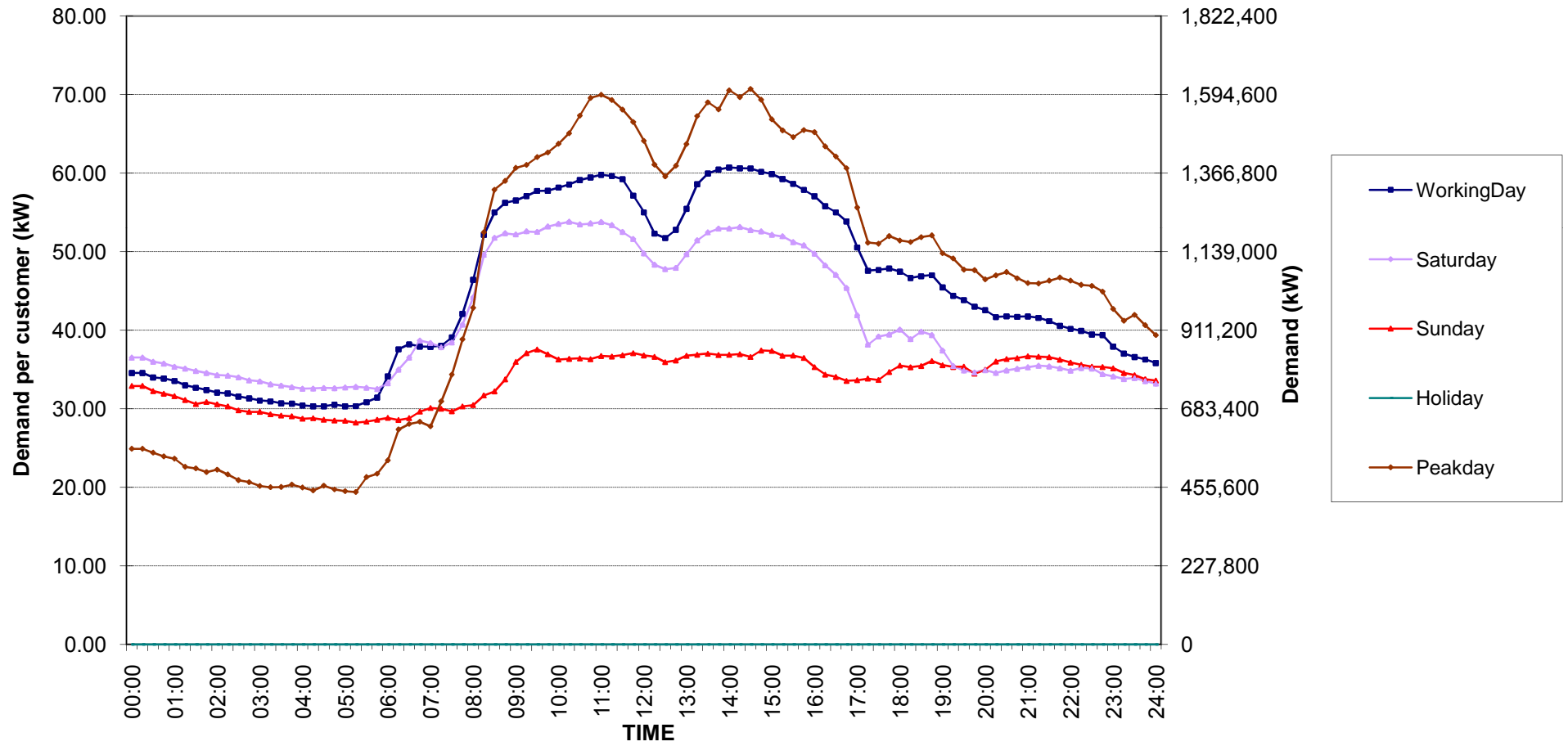


กราฟรูปที่ 4

Medium General Services Load Profile

Date: 1 Feb, 2018 to 28 Feb, 2018

Number of sample customers = 165

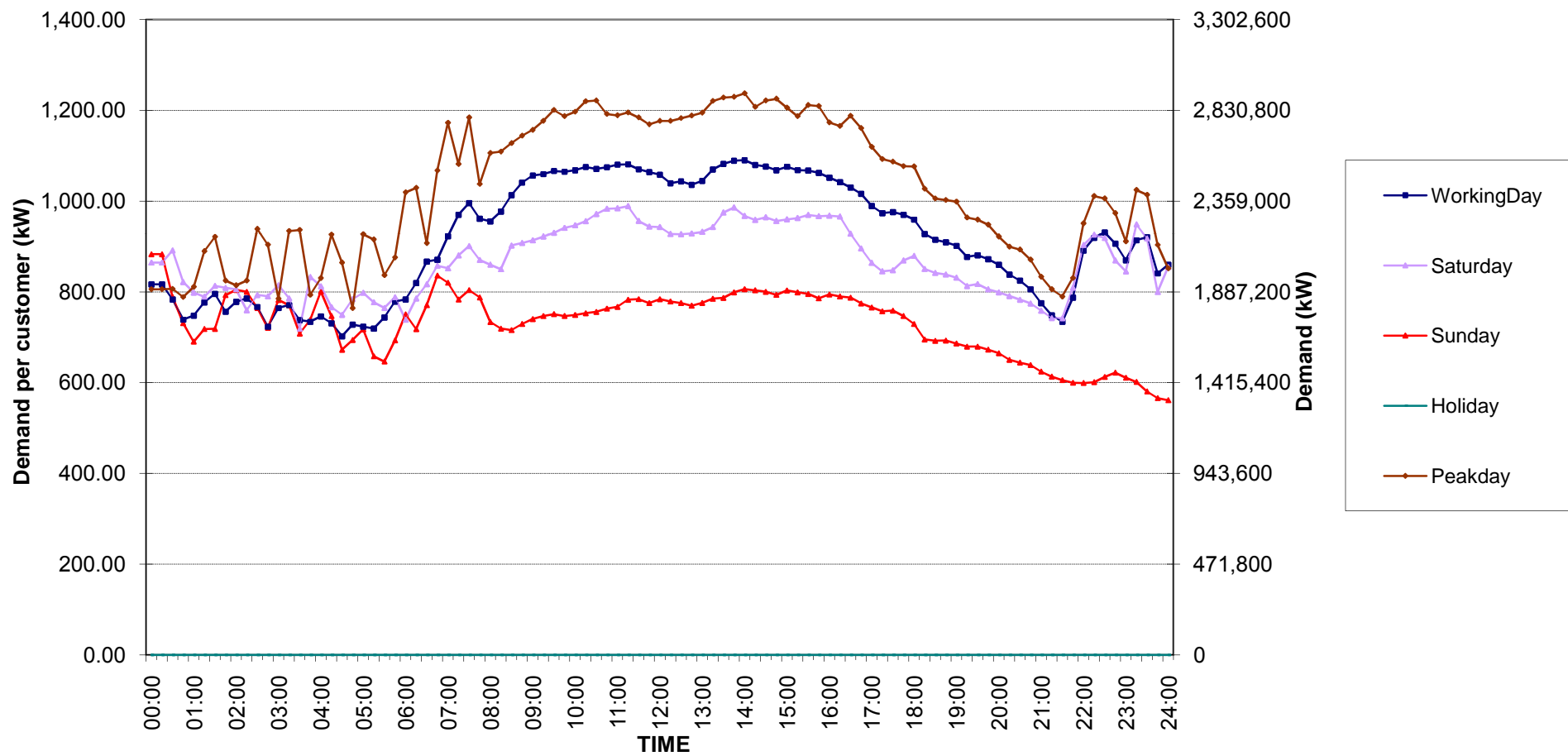


กราฟรูปที่ 5

Large General Services Load Profile

Date: 1 Feb, 2018 to 28 Feb, 2018

Number of sample customers = 284

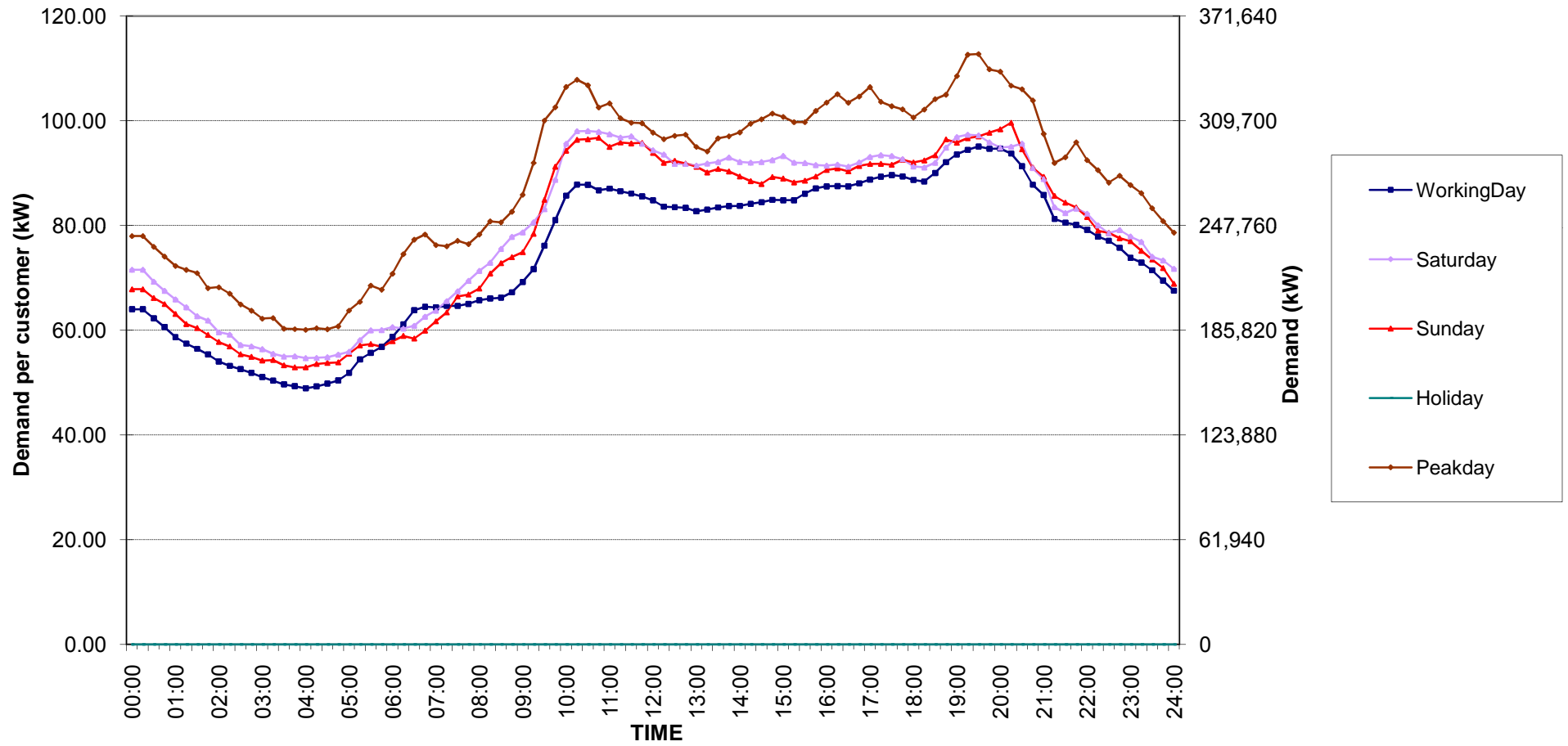


กราฟรูปที่ 6

Specific Business Load Profile

Date: 1 Feb, 2018 to 28 Feb, 2018

Number of sample customers = 74

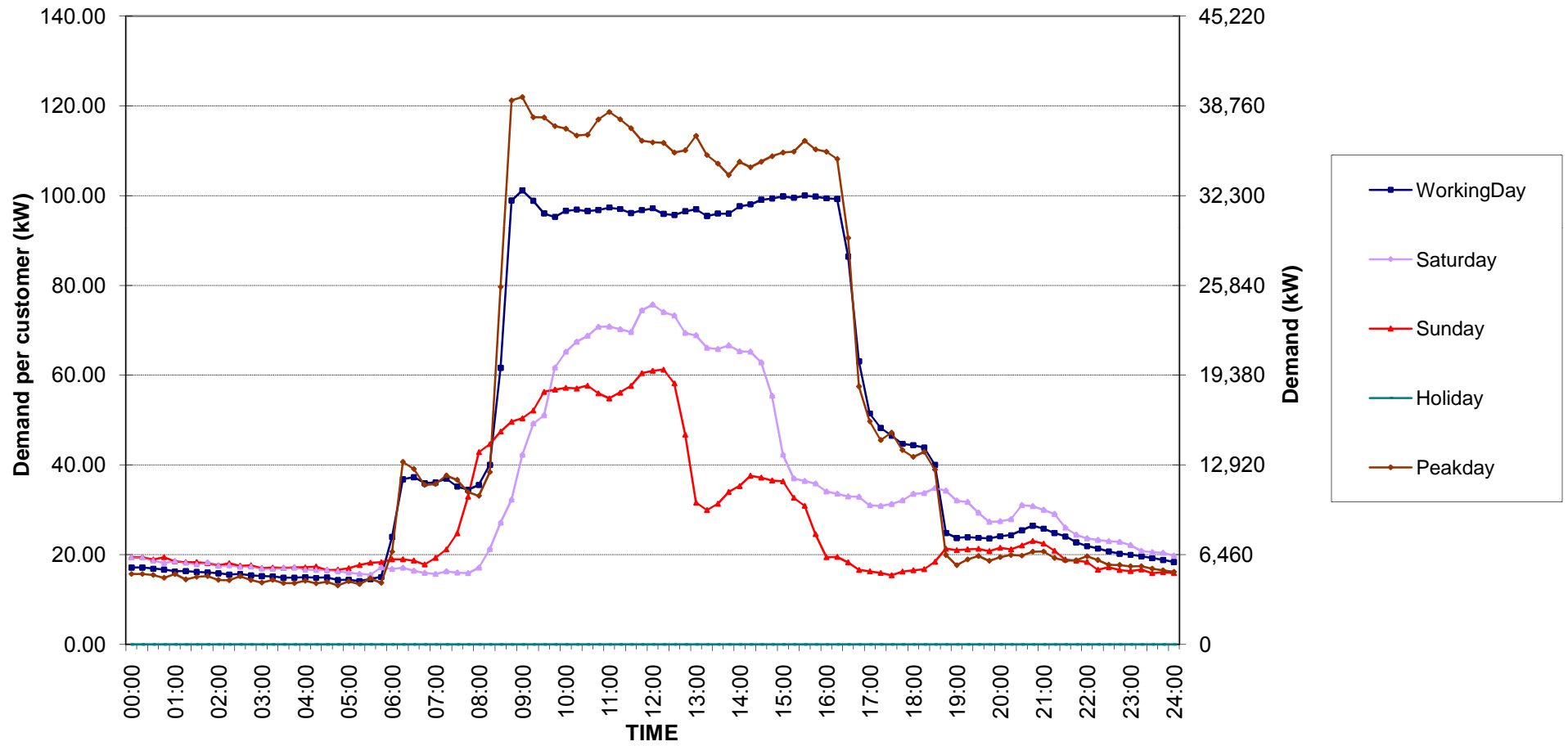


กราฟรูปที่ 7

Non-profit organizations Load Profile

Date: 1 Feb, 2018 to 28 Feb, 2018

Number of sample customers = 50

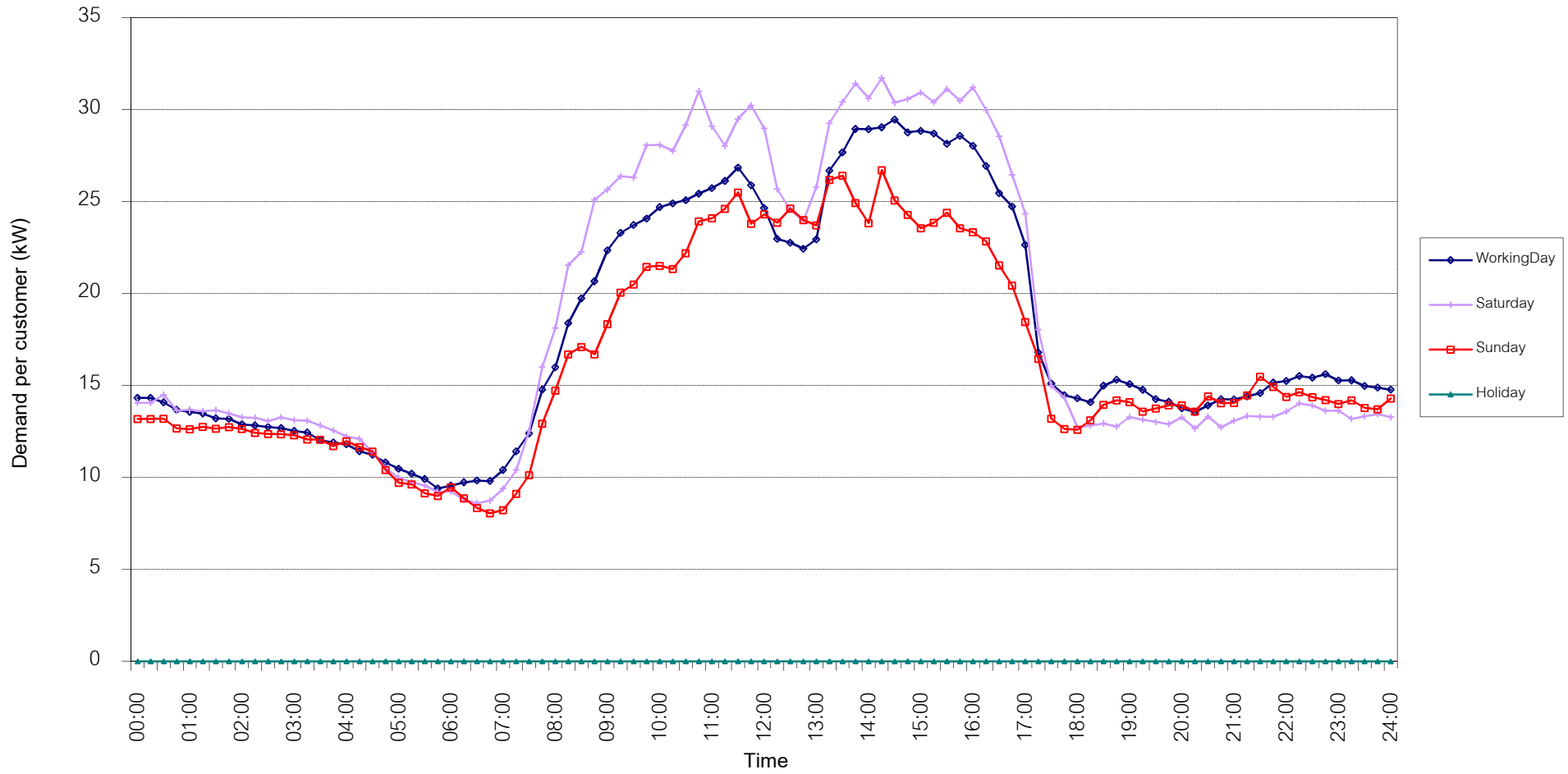


กราฟรูปที่ 8

TSIC 31 (Food Processing) Load Profile

Date: 1 Feb, 2018 to 28 Feb, 2018

Number of sample customers = 32

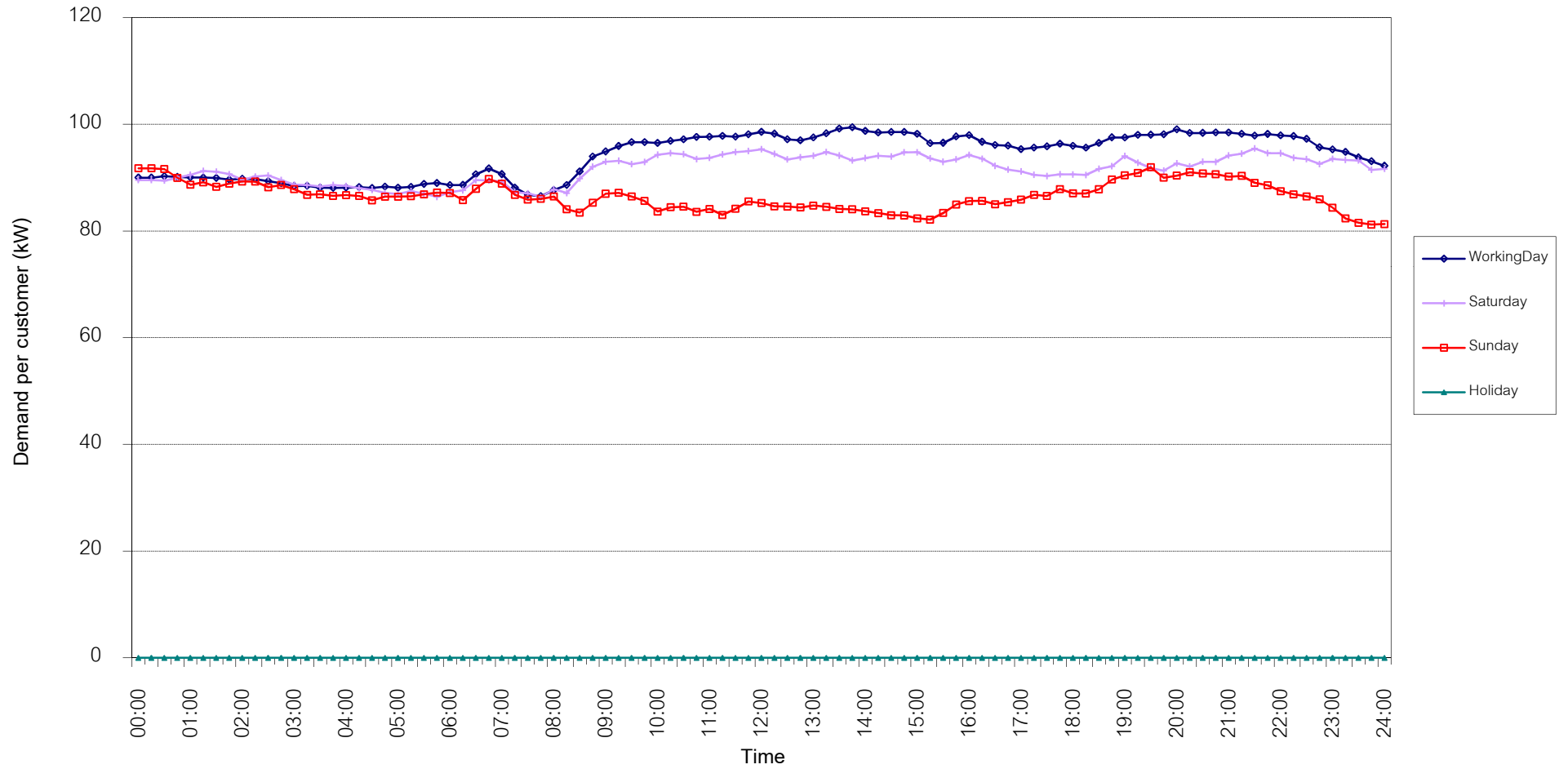


กราฟรูปที่ 9

TSIC 32 (Textiles) Load Profile

Date: 1 Feb, 2018 to 28 Feb, 2018

Number of sample customers = 67

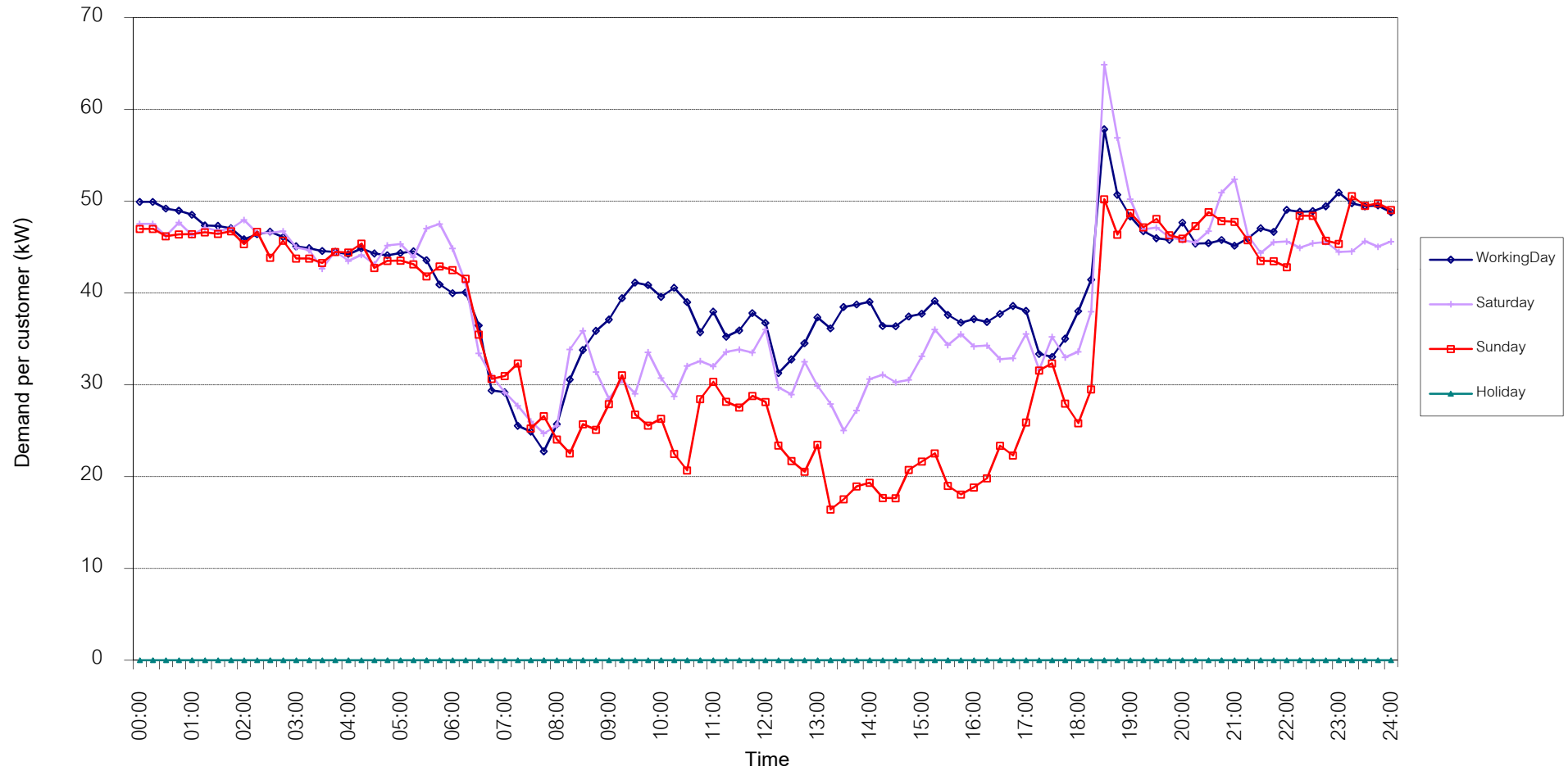


กราฟรูปที่ 10

TSIC 34 (Paper & Printing) Load Profile

Date: 1 Feb, 2018 to 28 Feb, 2018

Number of sample customers = 12

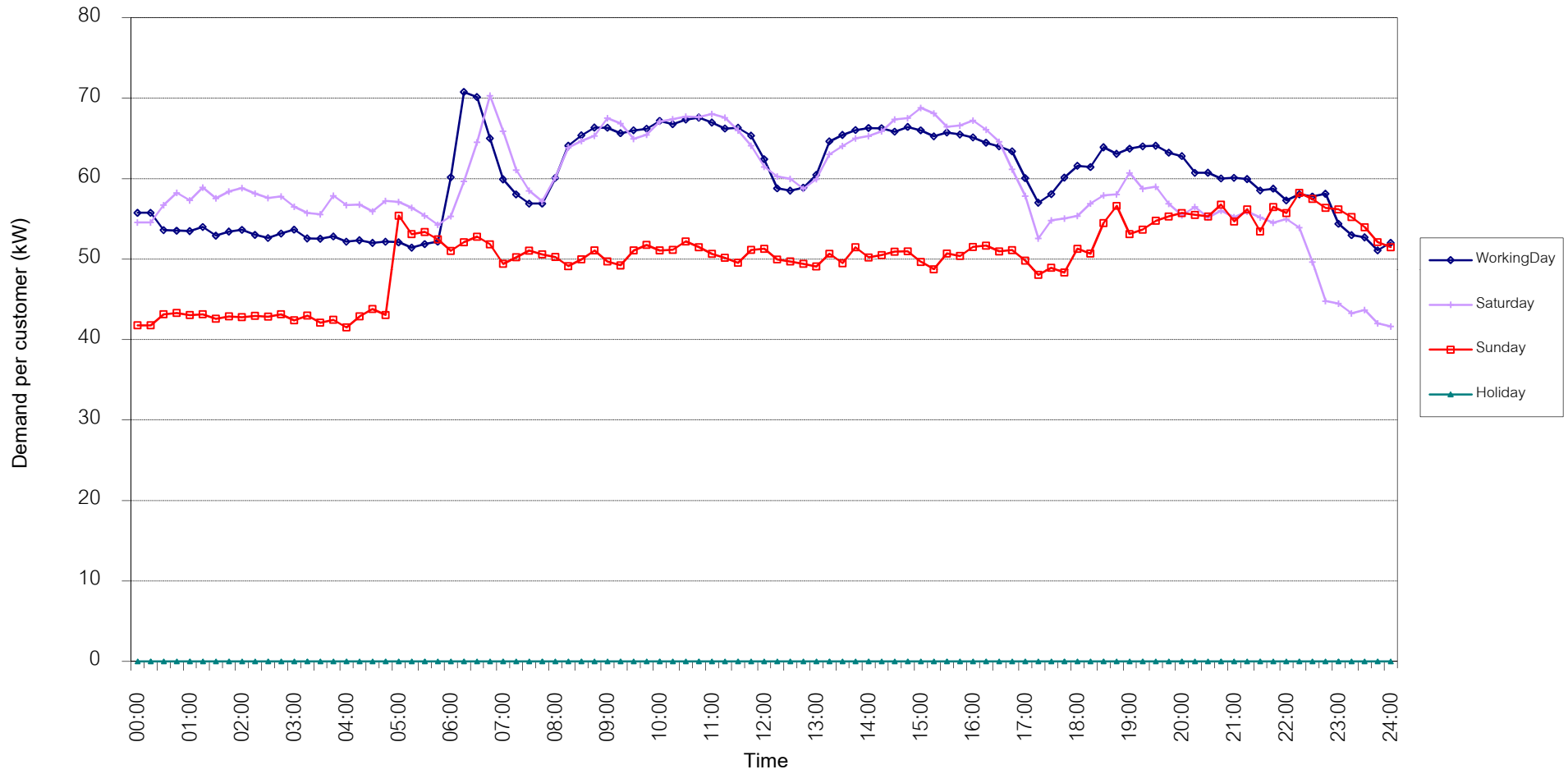


กราฟรูปที่ 11

TSIC 35 (Chemical & Petroleum) Load Profile

Date: 1 Feb, 2018 to 28 Feb, 2018

Number of sample customers = 75

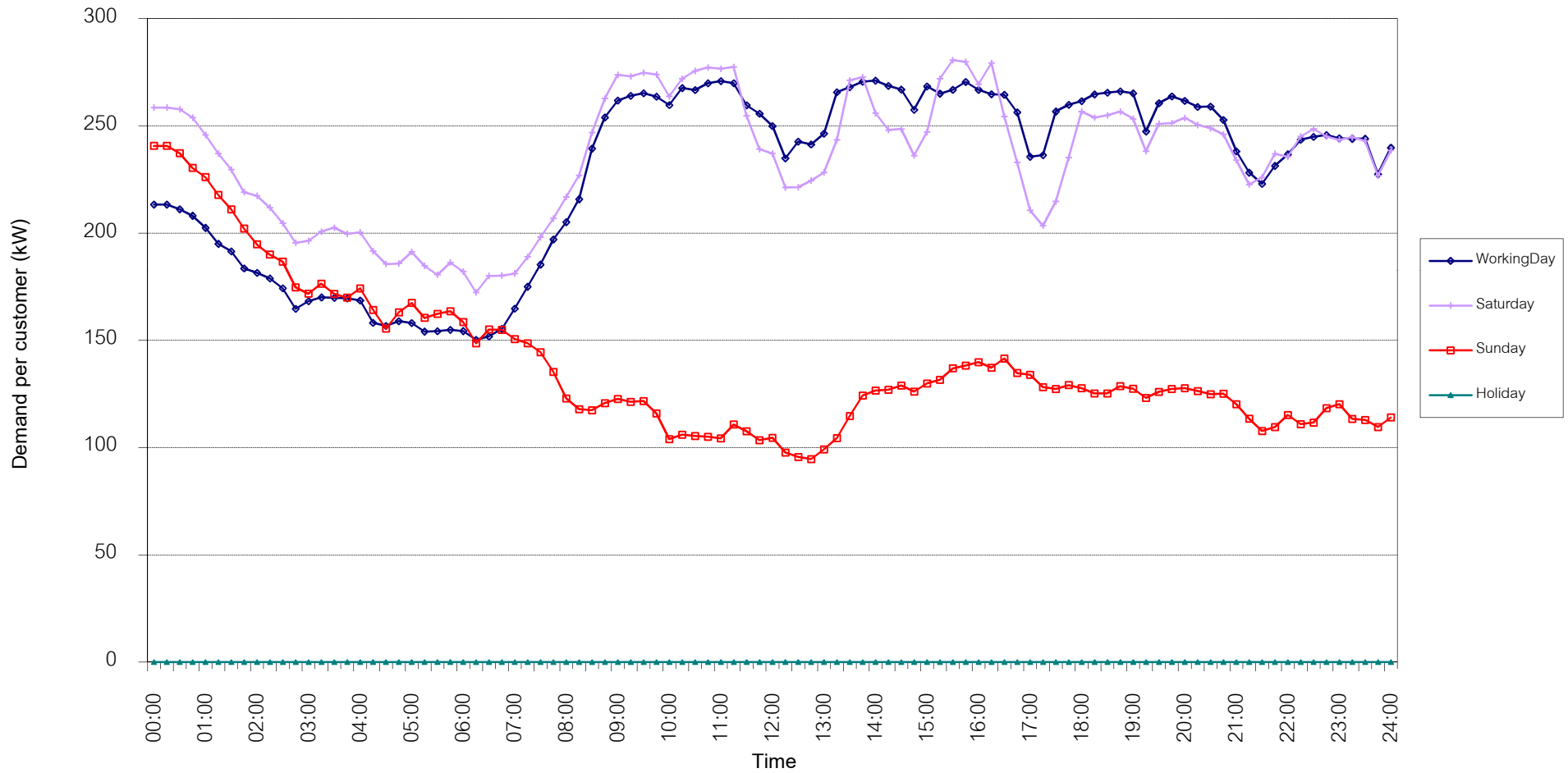


กราฟรูปที่ 12

TSIC 38 (Fabricated Metal Products) Load Profile

Date: 1 Feb, 2018 to 28 Feb, 2018

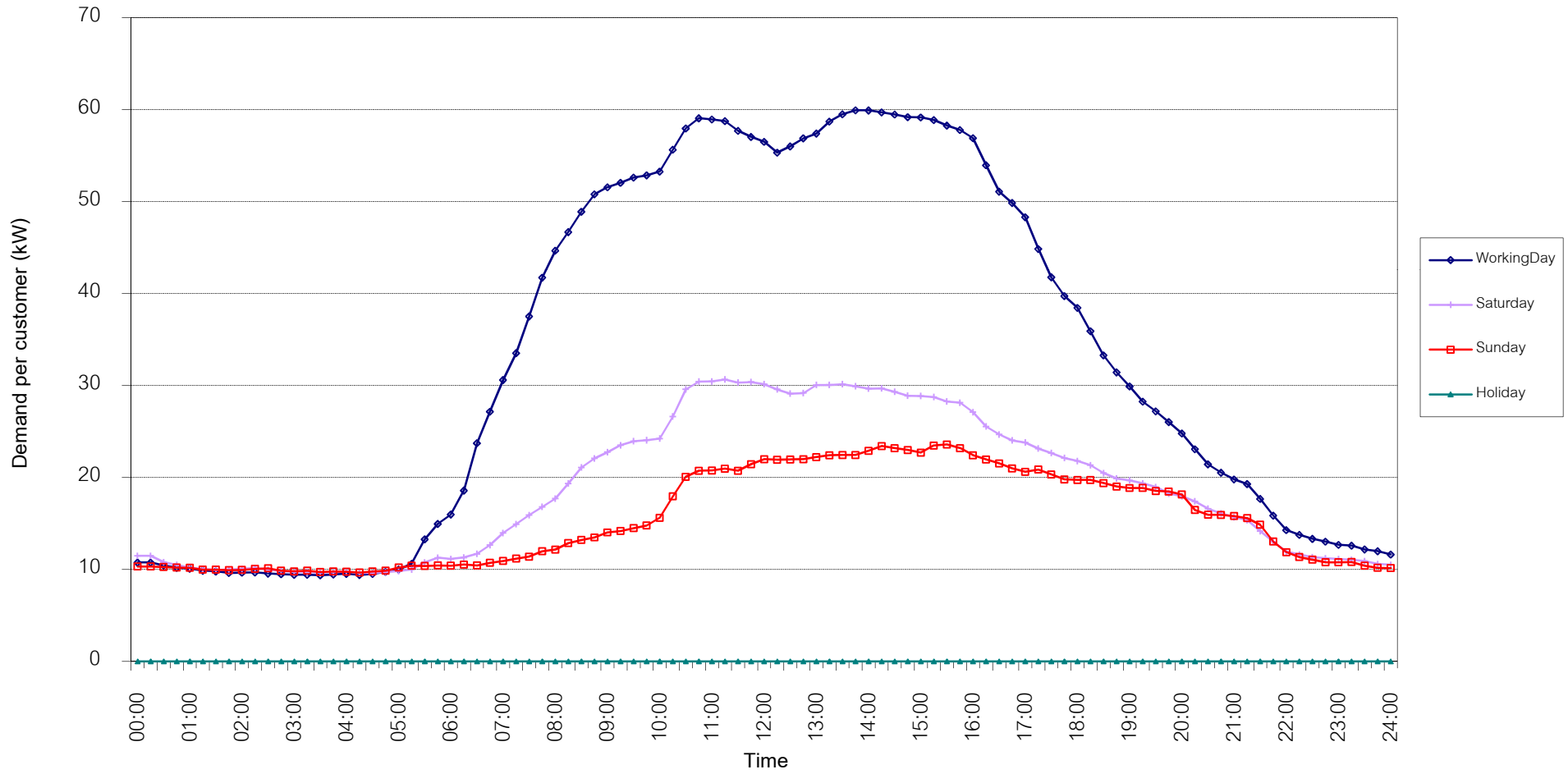
Number of sample customers = 62



TSIC 61 (Wholesale Trade) Load Profile

Date: 1 Feb, 2018 to 28 Feb, 2018

Number of sample customers = 48

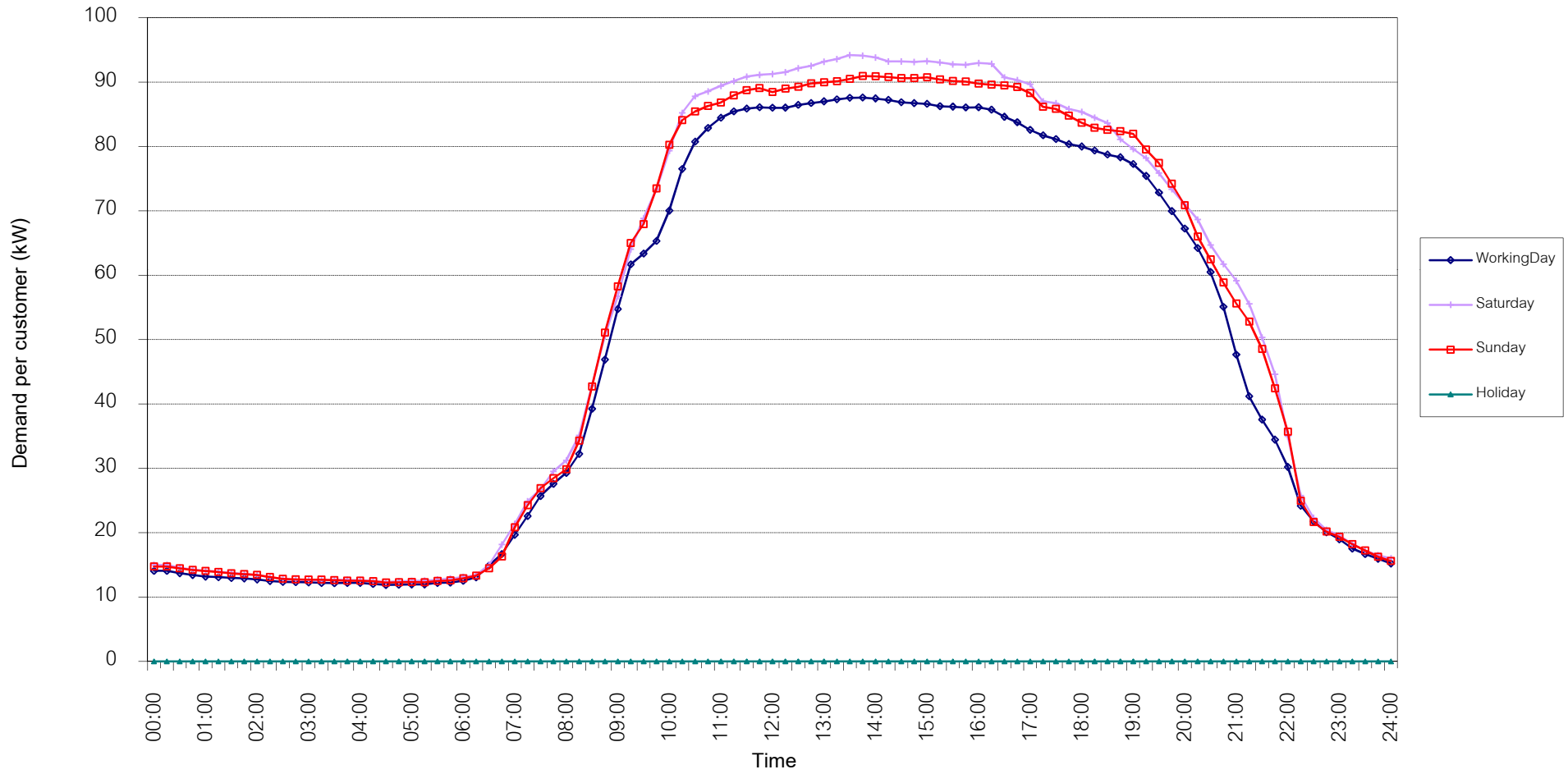


กราฟรูปที่ 14

TSIC 62 (Retail Trade) Load Profile

Date: 1 Feb, 2018 to 28 Feb, 2018

Number of sample customers = 93

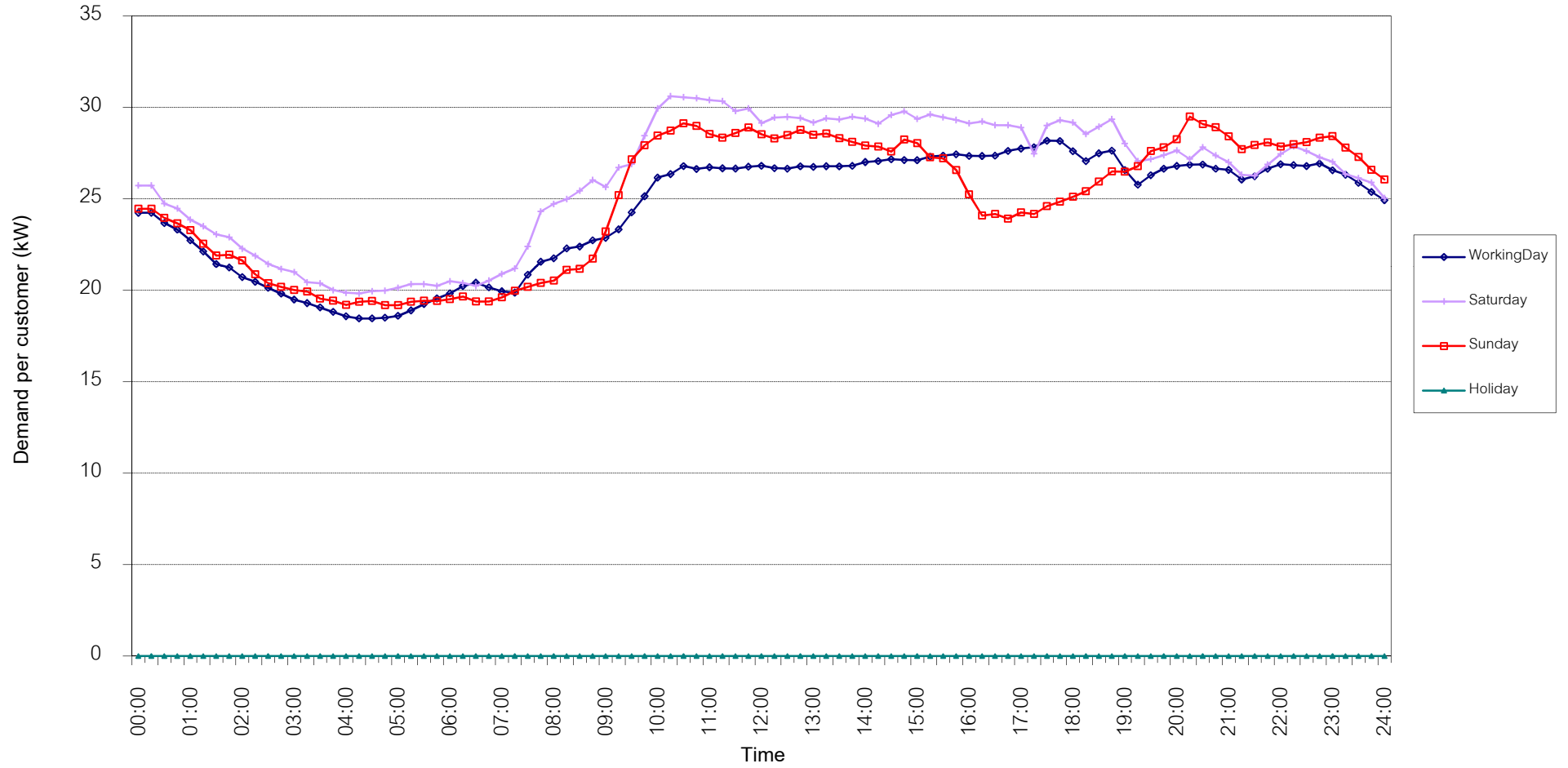


กราฟรูปที่ 15

TSIC 63 (Hotels and restaurants) Load Profile

Date: 1 Feb, 2018 to 28 Feb, 2018

Number of sample customers = 117

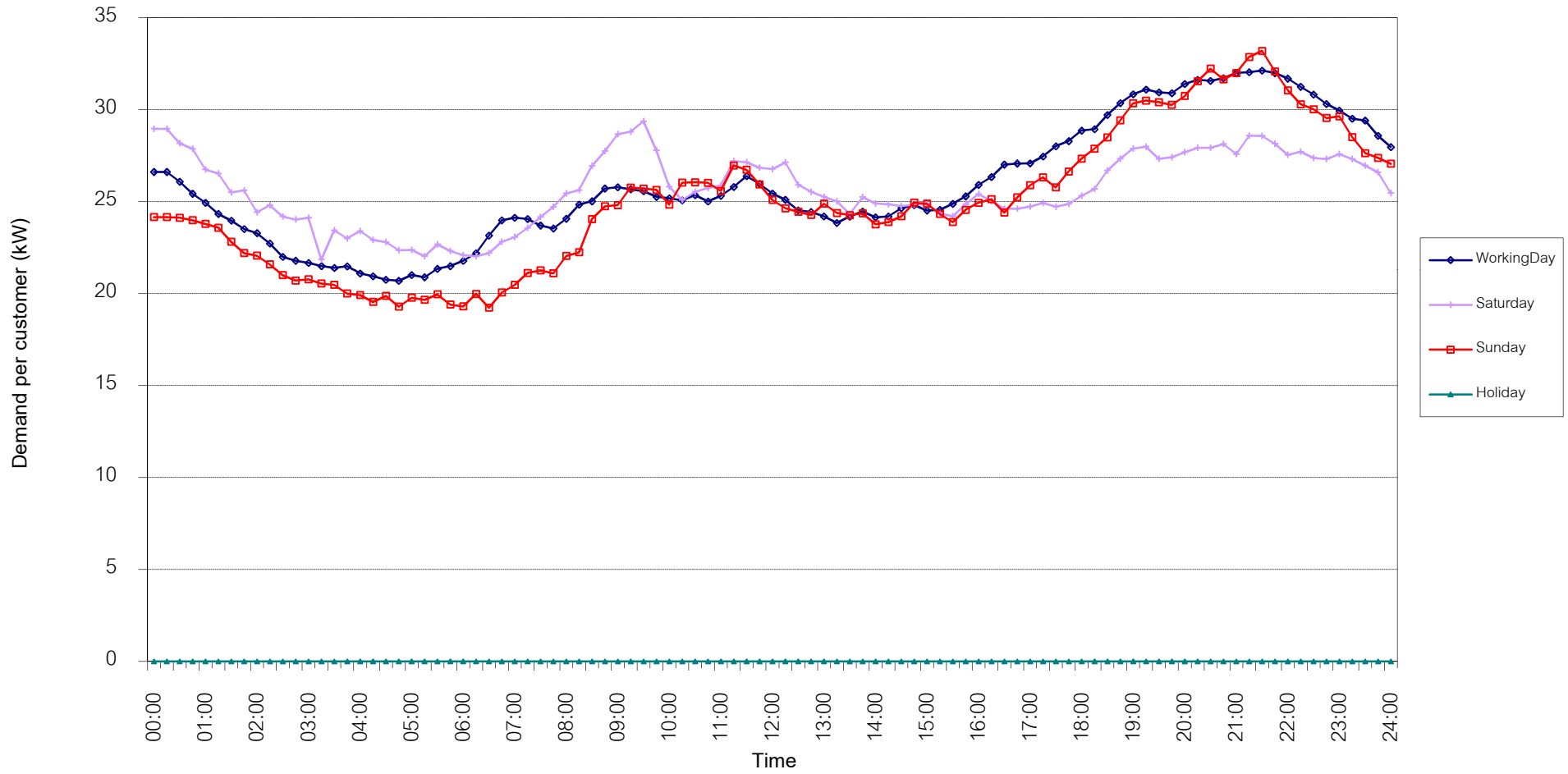


กราฟรูปที่ 16

TSIC 83 (Real Estate) Load Profile

Date: 1 Feb, 2018 to 28 Feb, 2018

Number of sample customers = 47

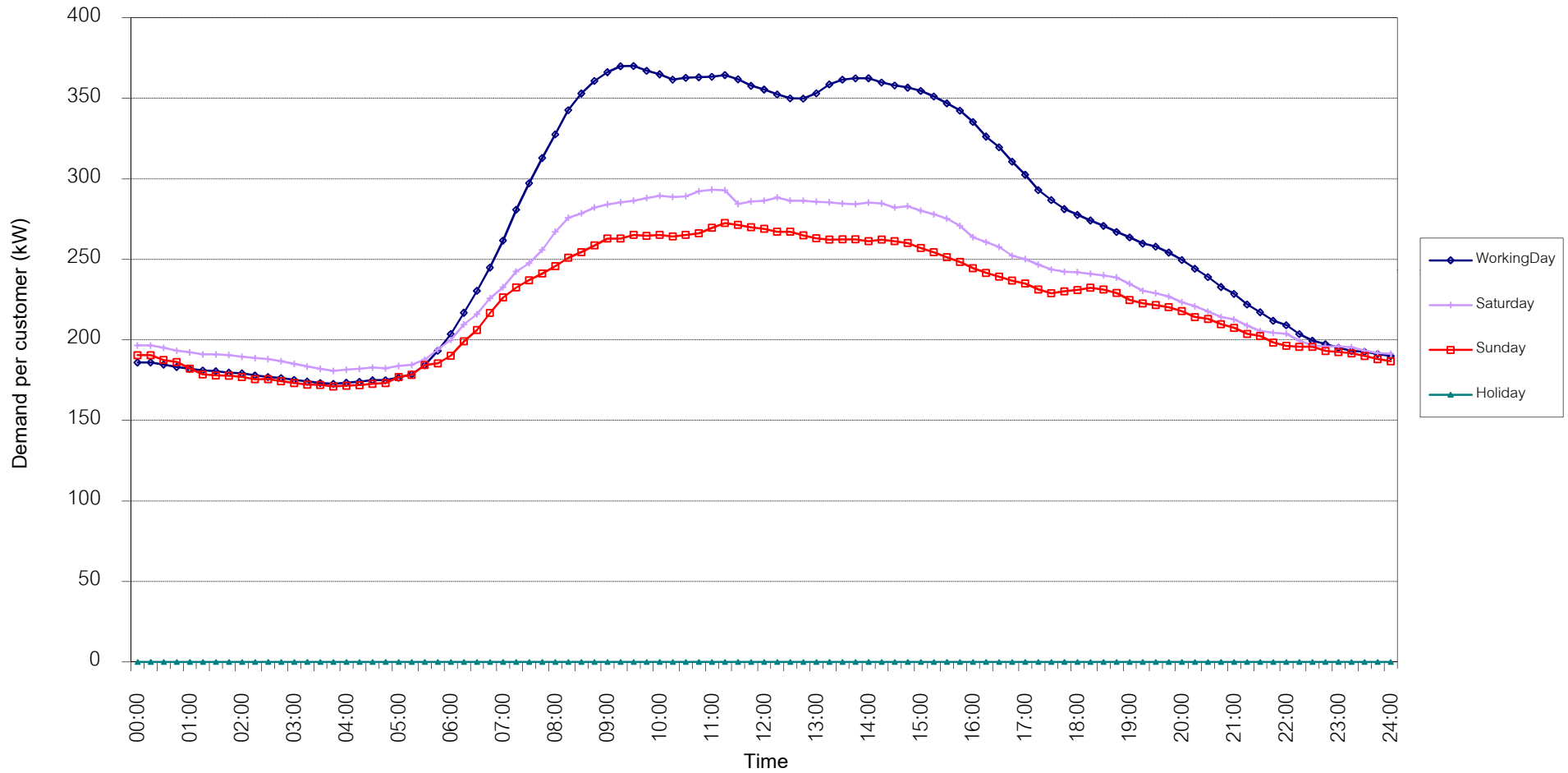


กราฟรูปที่ 17

TSIC 93 (Social Services) Load Profile

Date: 1 Feb, 2018 to 28 Feb, 2018

Number of sample customers = 27



กราฟรูปที่ 18

MEA's System Load Profile

Peak Day 22 Feb, 2018 at 14:30

