

ข้อมูลการศึกษาลักษณะการใช้ไฟฟ้า

เดือน ตุลาคม 2561

Table 1-1

COINCIDENT WITH LOAD RESEARCH SYSTEM'S PEAK ON October 18,2018 time 14:15 8,097.17 MW
 (MEA SYSTEM'S PEAK ON October 18,2018 time 14:00 8,374.784 MW)

CLASS	Number of Customers	Kilowatt hours	Coincident Peak (MEA System Peak at time 14:00)		Coincident Peak (Load Research System Peak at time 14:15)		Sector Diversified Demand		
			MW	Contribution (%)	MW	Contribution (%)	Max MW.	Date	Time
Residential	3,224,651	1,123,151,281	1,147.79	14.19	1,154.54	14.26	2,546.54	29 Oct 18	21:00
Small General Service	509,194	672,743,271	1,290.79	15.95	1,302.26	16.08	1,384.36	26 Oct 18	11:15
Medium General Service	23,168	745,056,398	1,359.49	16.80	1,352.69	16.71	1,772.08	16 Oct 18	14:15
Large General Service	2,380	1,595,412,556	3,536.45	43.71	3,532.11	43.62	3,536.45	18 Oct 18	14:00
Specific Business	3,155	183,158,890	355.17	4.39	355.20	4.39	356.31	16 Oct 18	20:30
Non Profit Organization	318	11,033,109	55.62	0.69	55.33	0.68	64.74	18 Oct 18	12:00
Public Lighting	-	42,069,214	0.00	0.00	0.00	0.00	116.31	-	-
Loss	-	184,740,386	346.20	4.28	345.04	4.26	346.20	18 Oct 18	14:00
TOTAL	3,762,866	4,557,365,105	8,091.50	100.00	8,097.17	100.00	8,097.17	18 Oct 18	14:15

Table 1-2

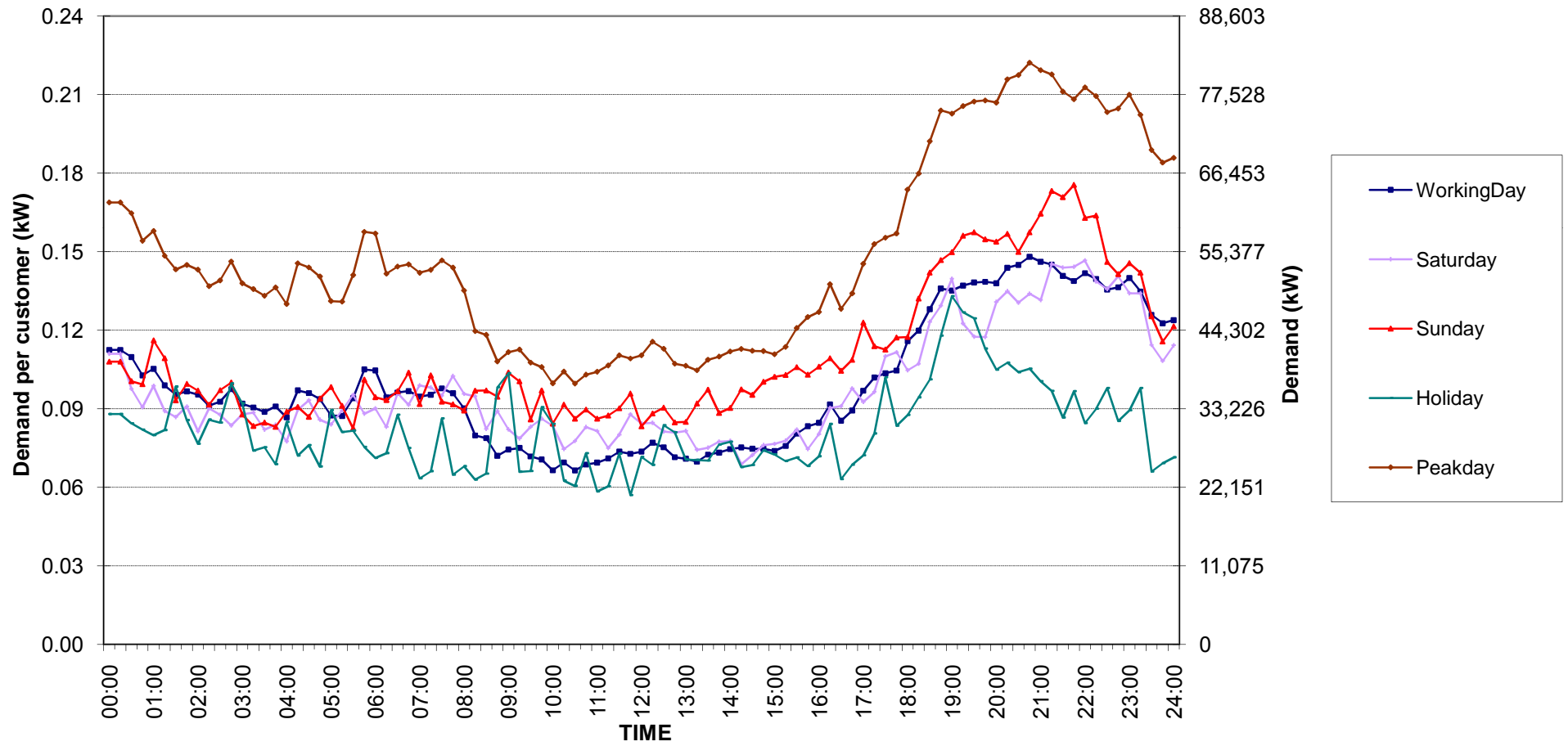
Number of sample customers on October, 2018

CLASS	Number of sample customers (Target)	Number of sample customers (Collected)
Residential	171	171
Small General Service	258	258
Medium General Service	165	165
Large General Service	284	284
Specific Business	74	74
Non-profit Organization	50	50
TOTAL	1,002	1,002

Residential (Energy Consumption less than 150 kWh per month)

Date: 1 Oct, 2018 to 31 Oct, 2018

Number of sample customers = 52

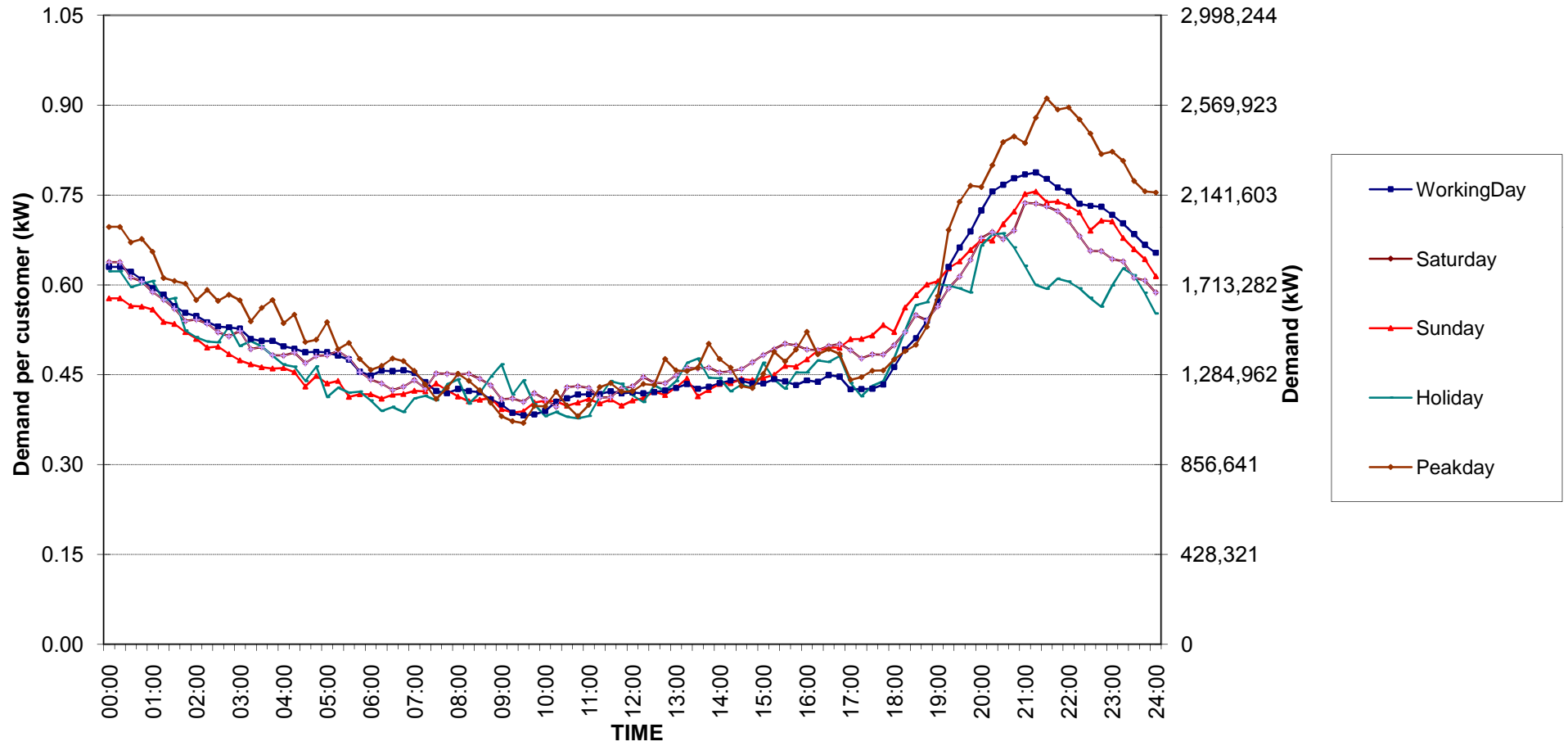


กราฟรูปที่ 1

Residential (Energy Consumption more than 150 kWh per month)

Date: 1 Oct, 2018 to 31 Oct, 2018

Number of sample customers = 119

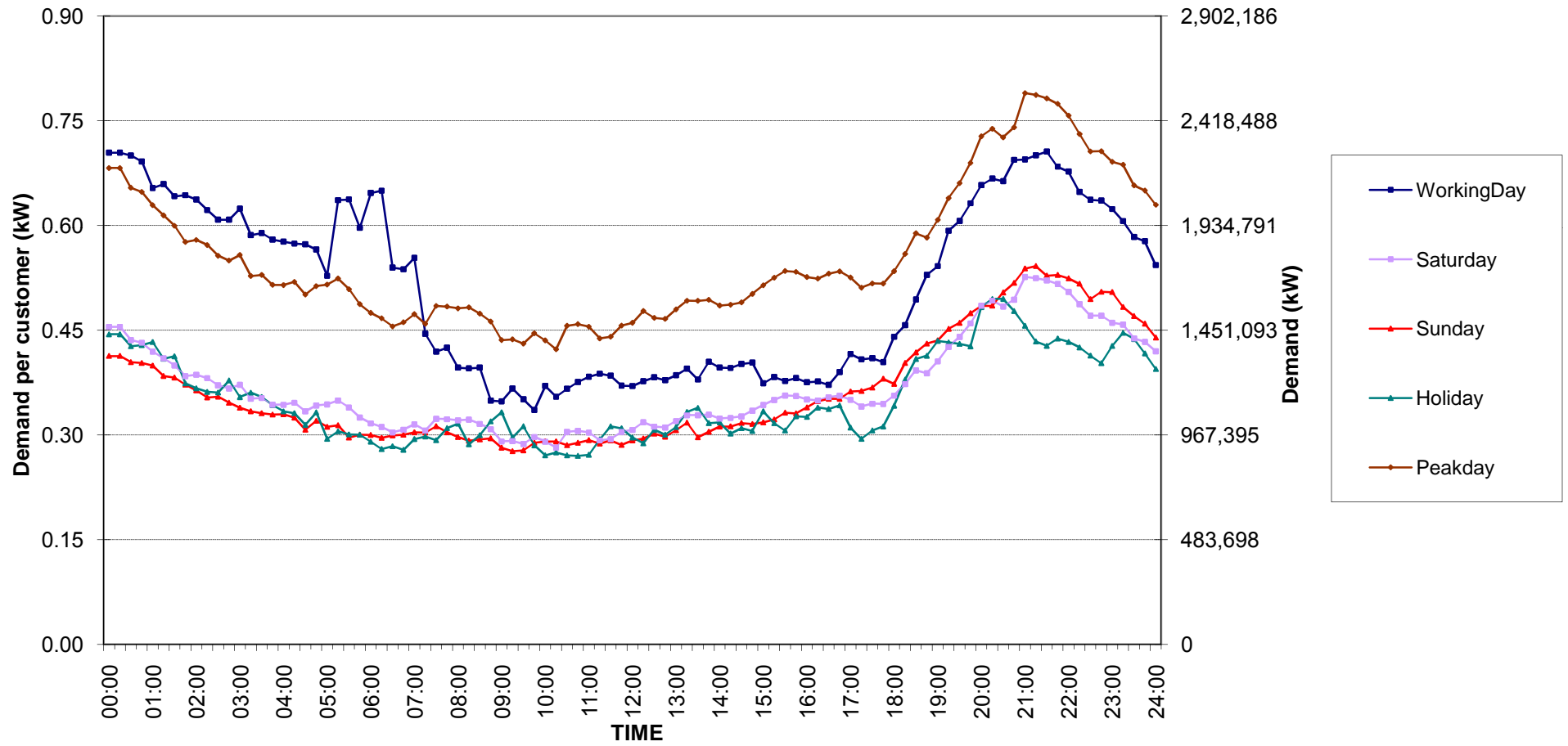


กราฟรูปที่ 2

Residential Load Profile

Date: 1 Oct, 2018 to 31 Oct, 2018

Number of sample customers = 171

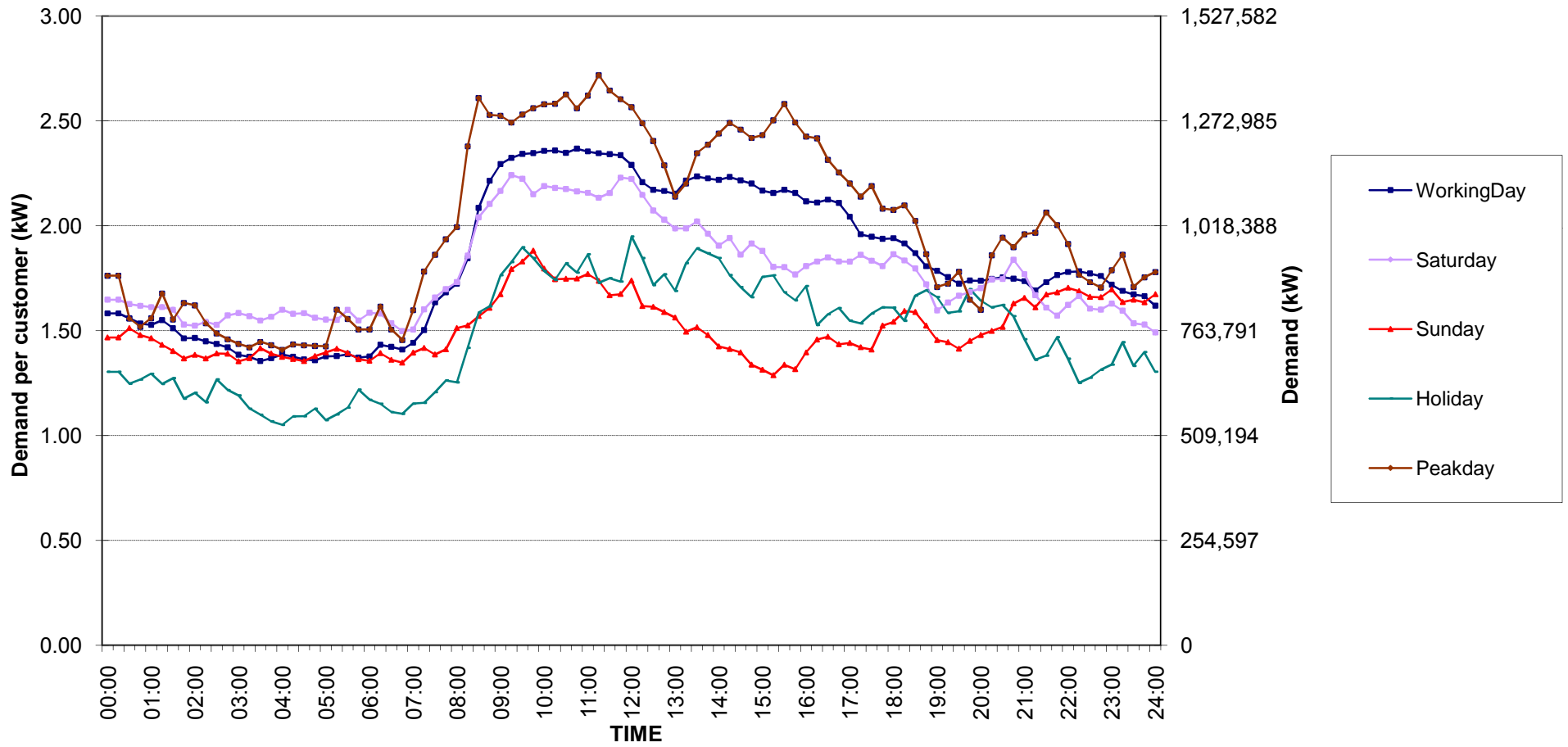


กราฟรูปที่ 3

Small General Services Load Profile

Date: 1 Oct, 2018 to 31 Oct, 2018

Number of sample customers = 258

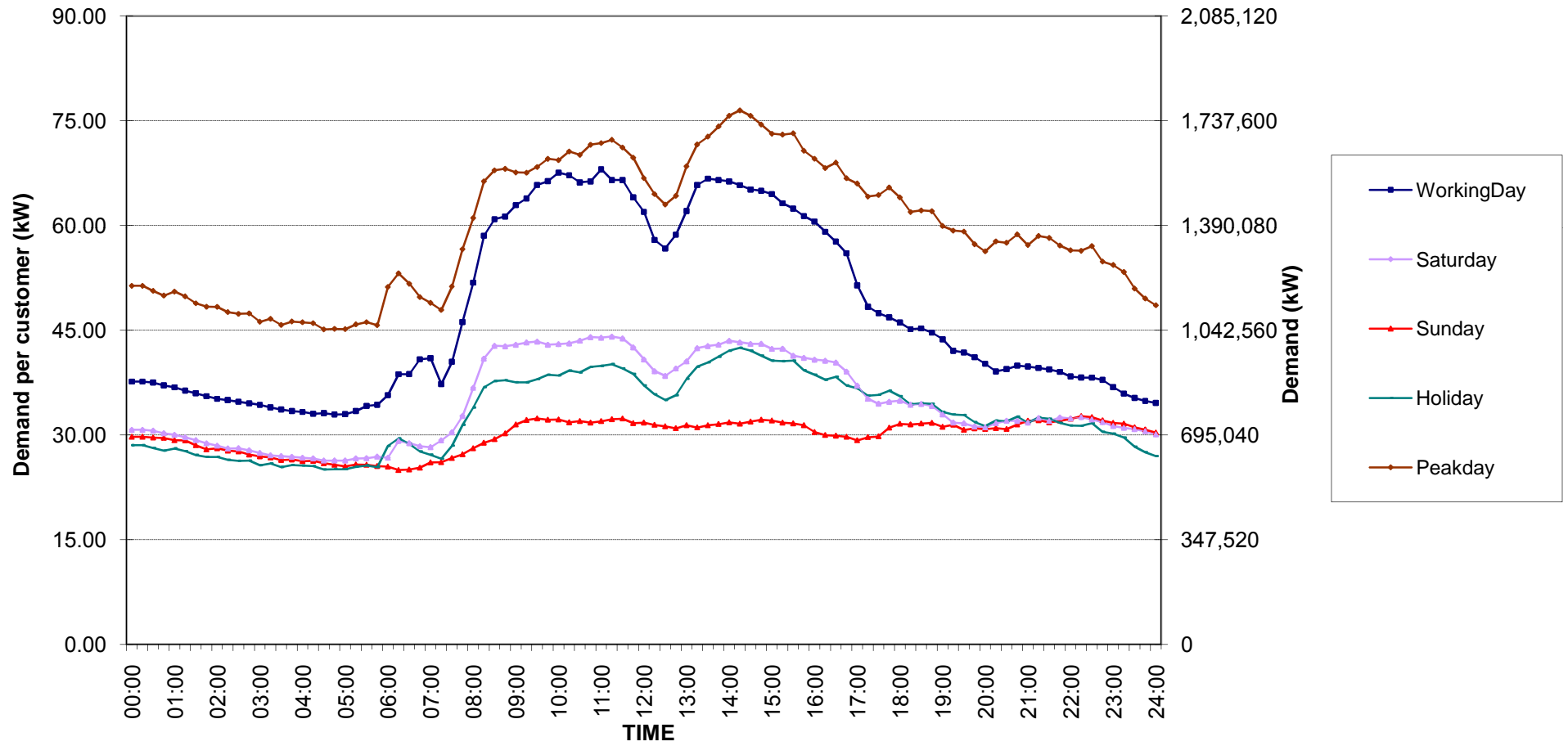


กราฟรูปที่ 4

Medium General Services Load Profile

Date: 1 Oct, 2018 to 31 Oct, 2018

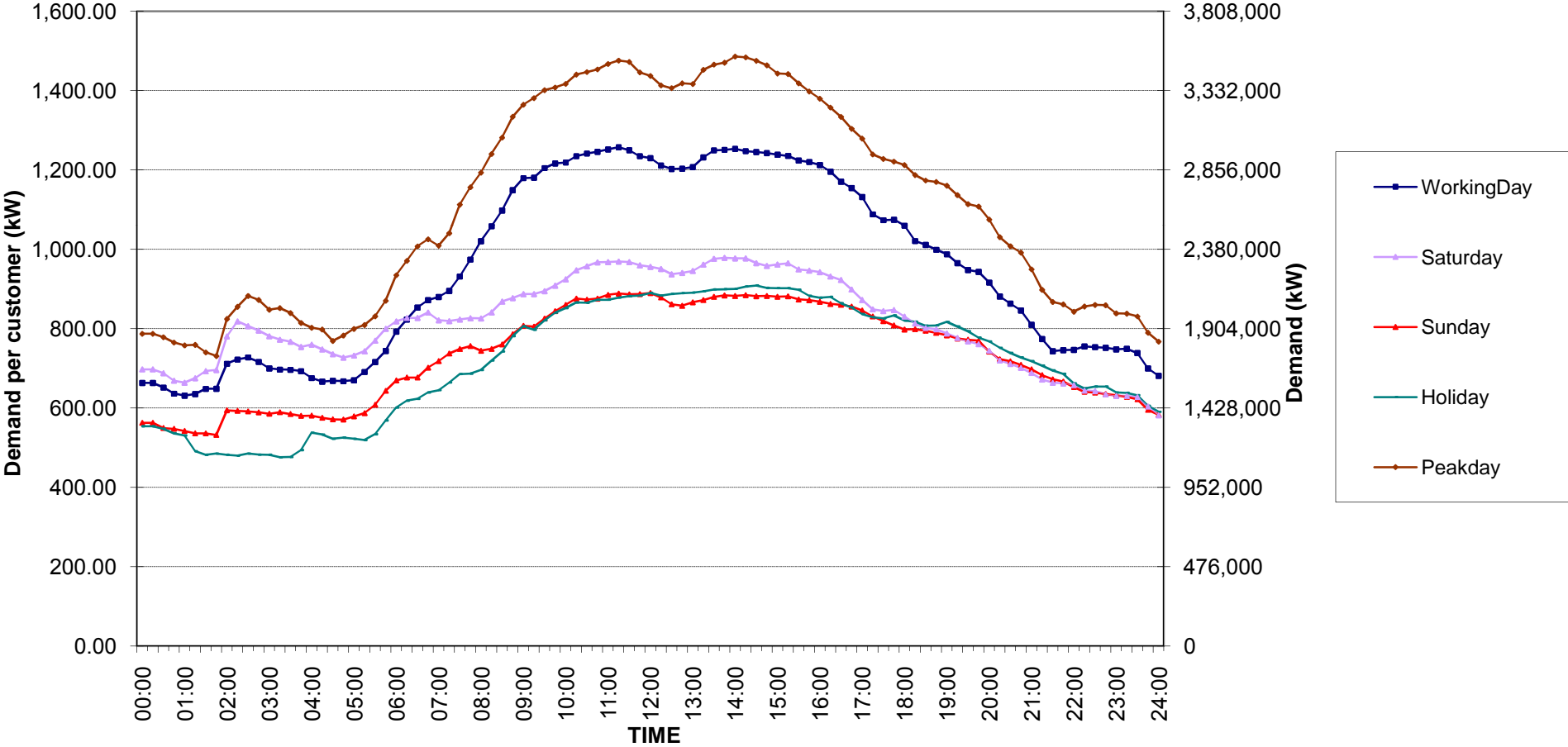
Number of sample customers = 165



Large General Services Load Profile

Date: 1 Oct, 2018 to 31 Oct, 2018

Number of sample customers = 284

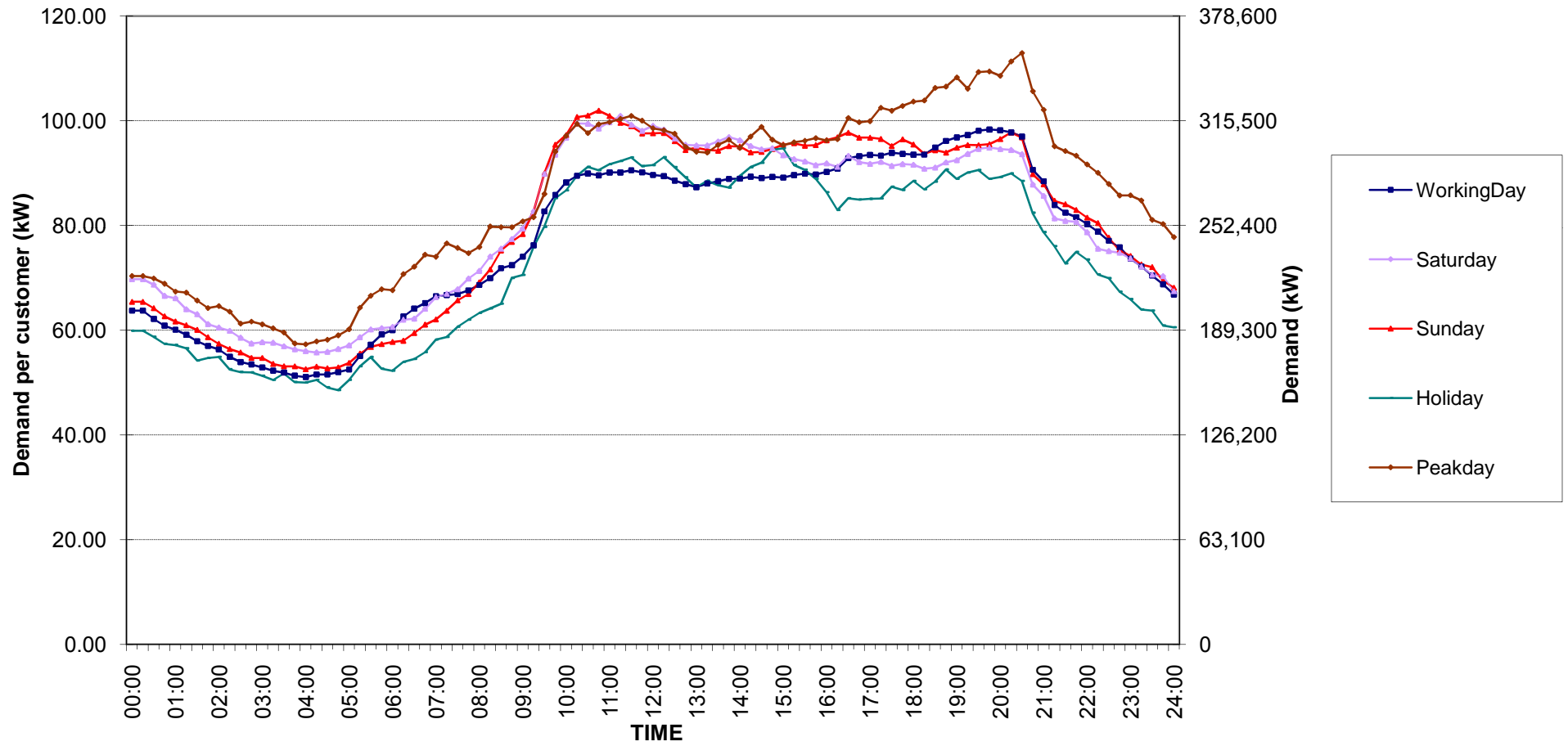


กราฟรูปที่ 6

Specific Business Load Profile

Date: 1 Oct, 2018 to 31 Oct, 2018

Number of sample customers = 74

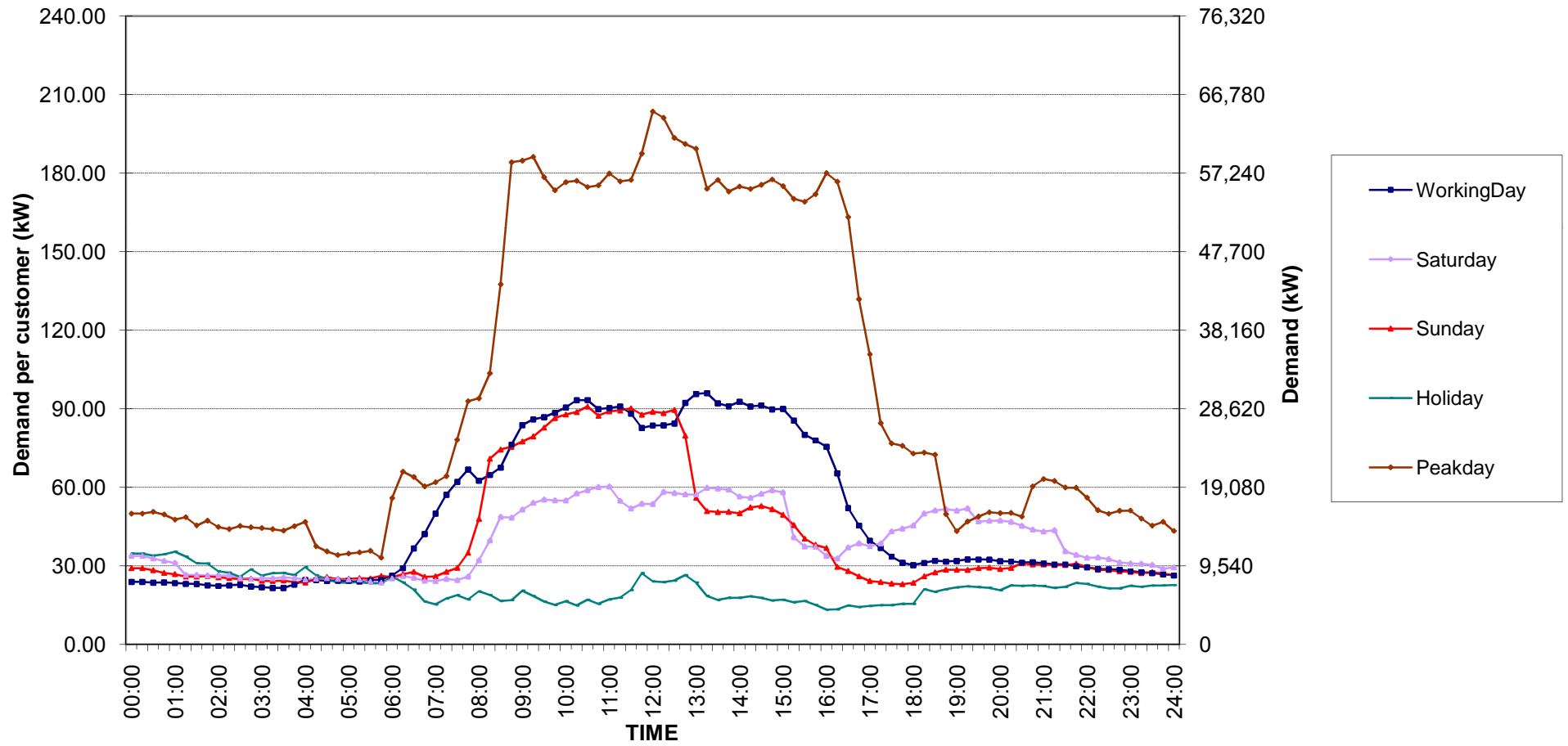


กราฟรูปที่ 7

Non-profit organizations Load Profile

Date: 1 Oct, 2018 to 31 Oct, 2018

Number of sample customers = 50

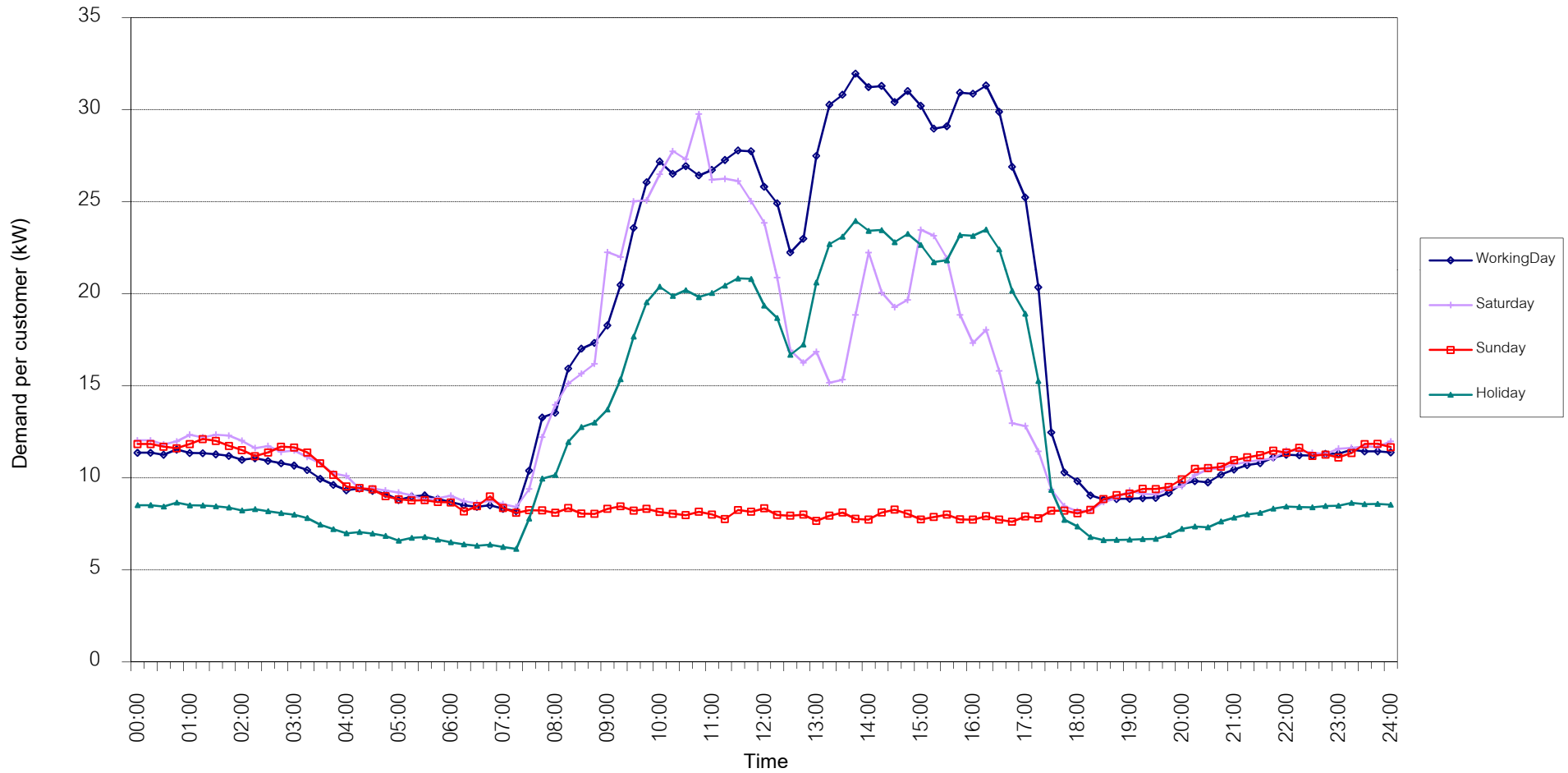


กราฟรูปที่ 8

TSIC 31 (Food Processing) Load Profile

Date: 1 Oct, 2018 to 31 Oct, 2018

Number of sample customers = 32

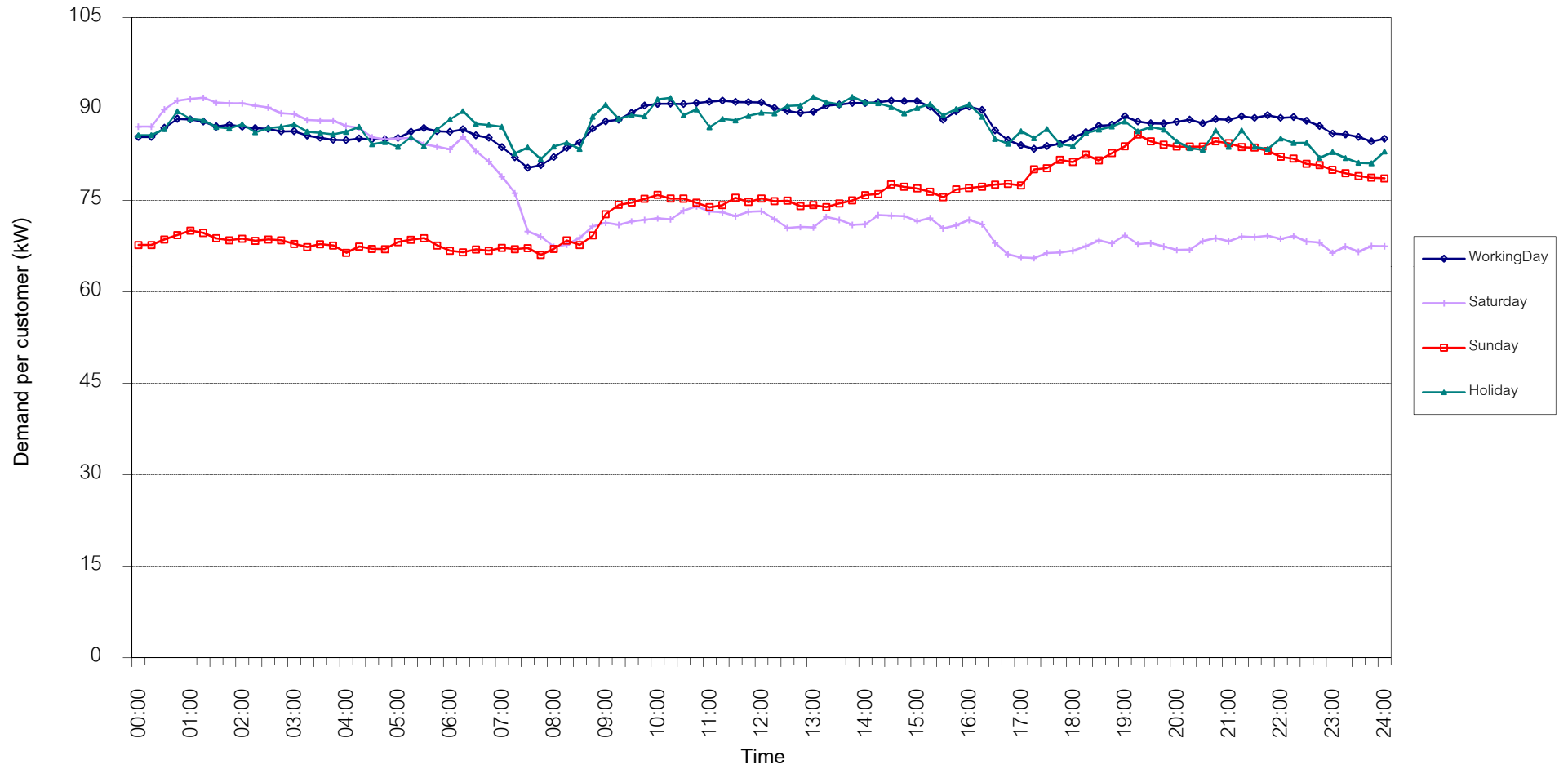


กราฟรูปที่ 9

TSIC 32 (Textiles) Load Profile

Date: 1 Oct, 2018 to 31 Oct, 2018

Number of sample customers = 67

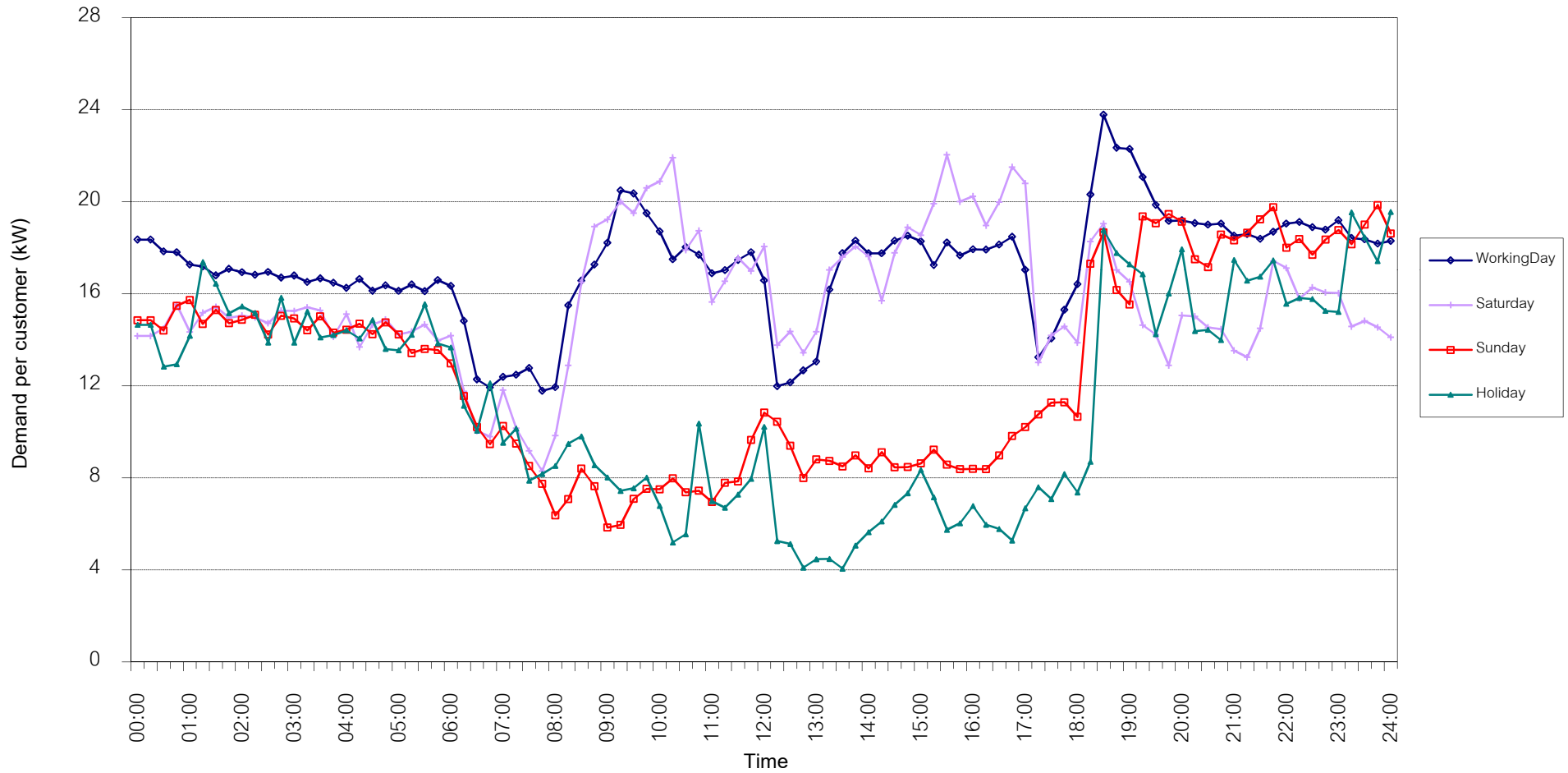


กราฟรูปที่ 10

TSIC 34 (Paper & Printing) Load Profile

Date: 1 Oct, 2018 to 31 Oct, 2018

Number of sample customers = 12

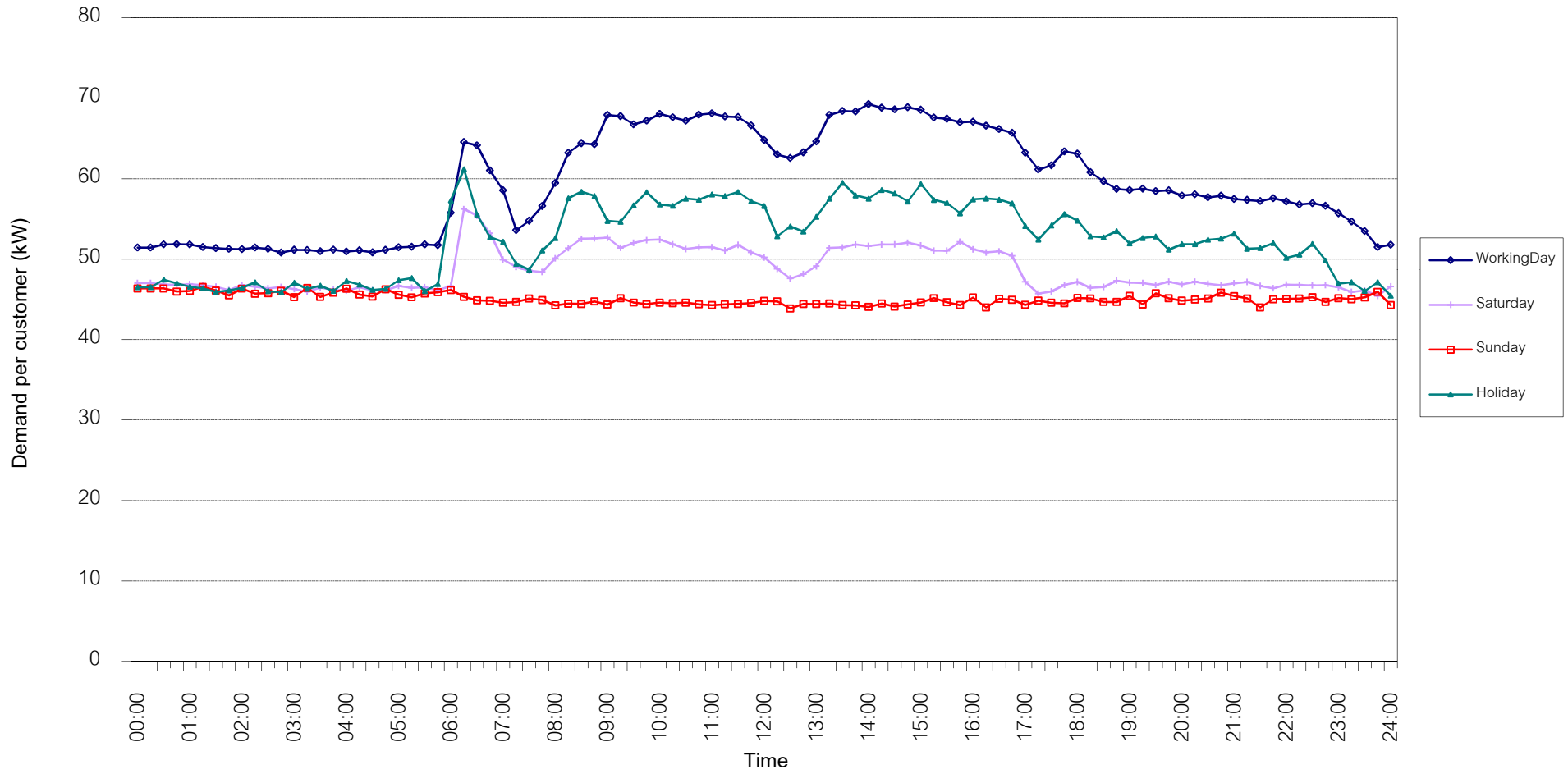


กราฟรูปที่ 11

TSIC 35 (Chemical & Petroleum) Load Profile

Date: 1 Oct, 2018 to 31 Oct, 2018

Number of sample customers = 75

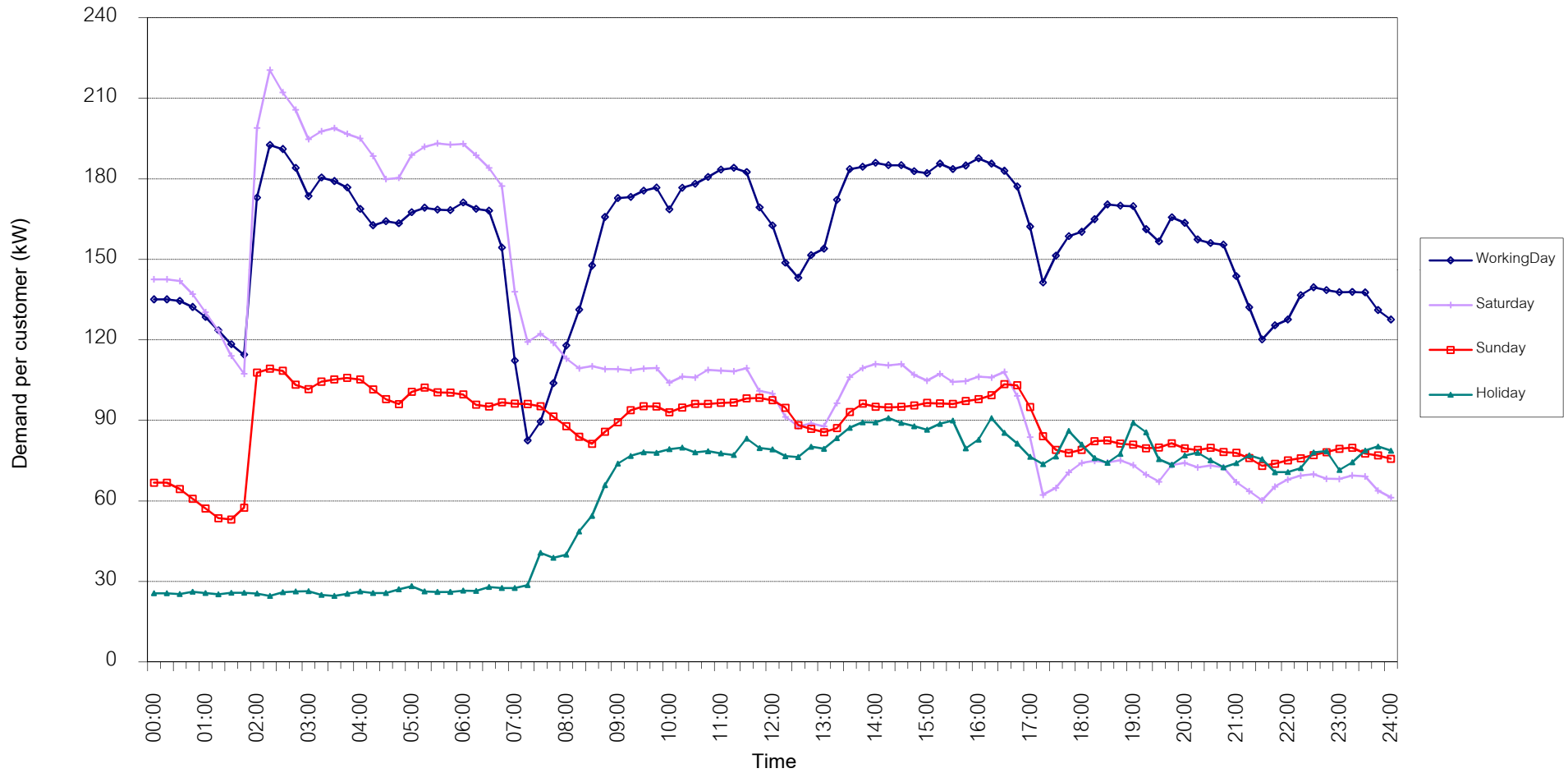


กราฟรูปที่ 12

TSIC 38 (Fabricated Metal Products) Load Profile

Date: 1 Oct, 2018 to 31 Oct, 2018

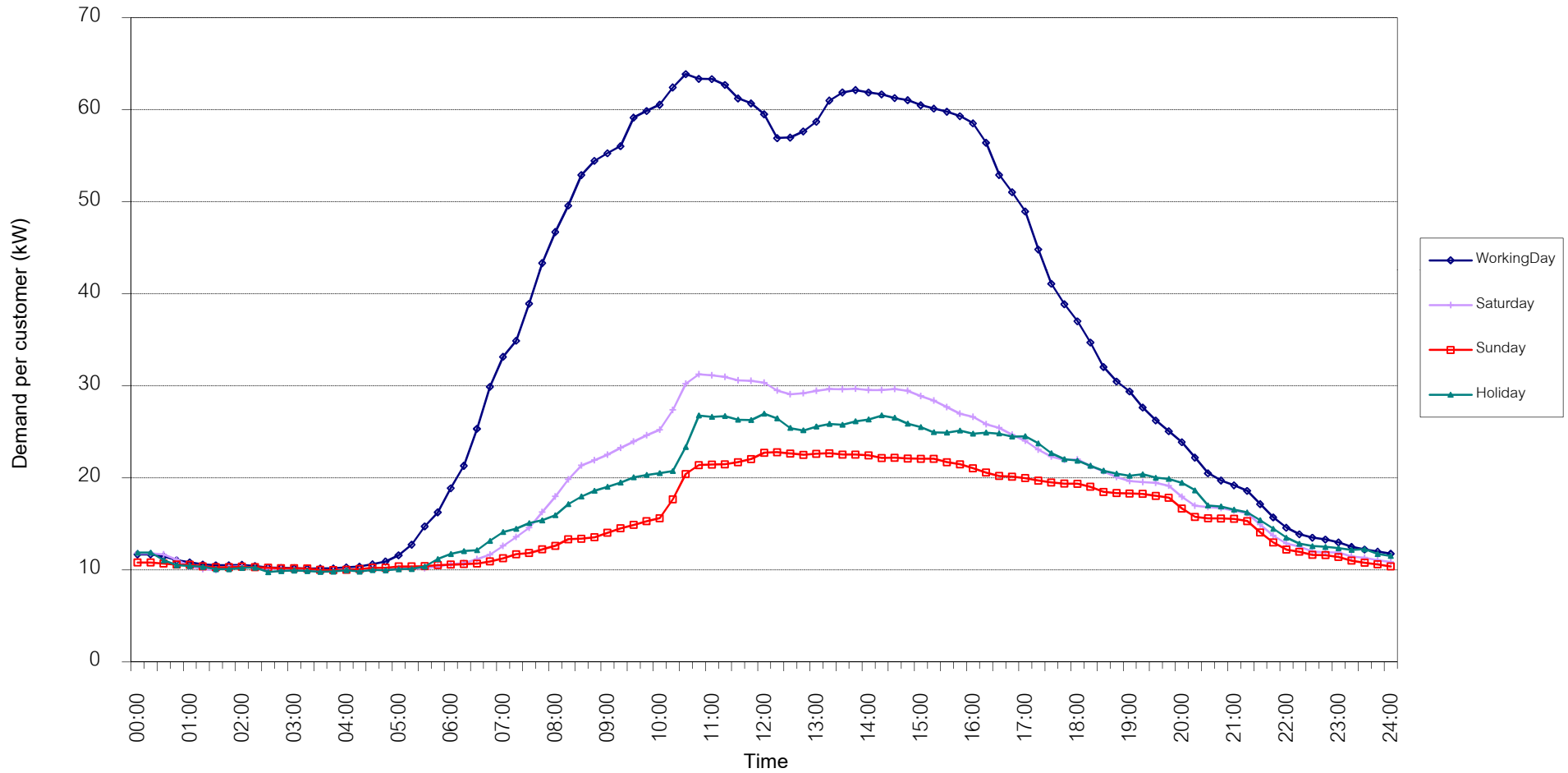
Number of sample customers = 62



TSIC 61 (Wholesale Trade) Load Profile

Date: 1 Oct, 2018 to 31 Oct, 2018

Number of sample customers = 48

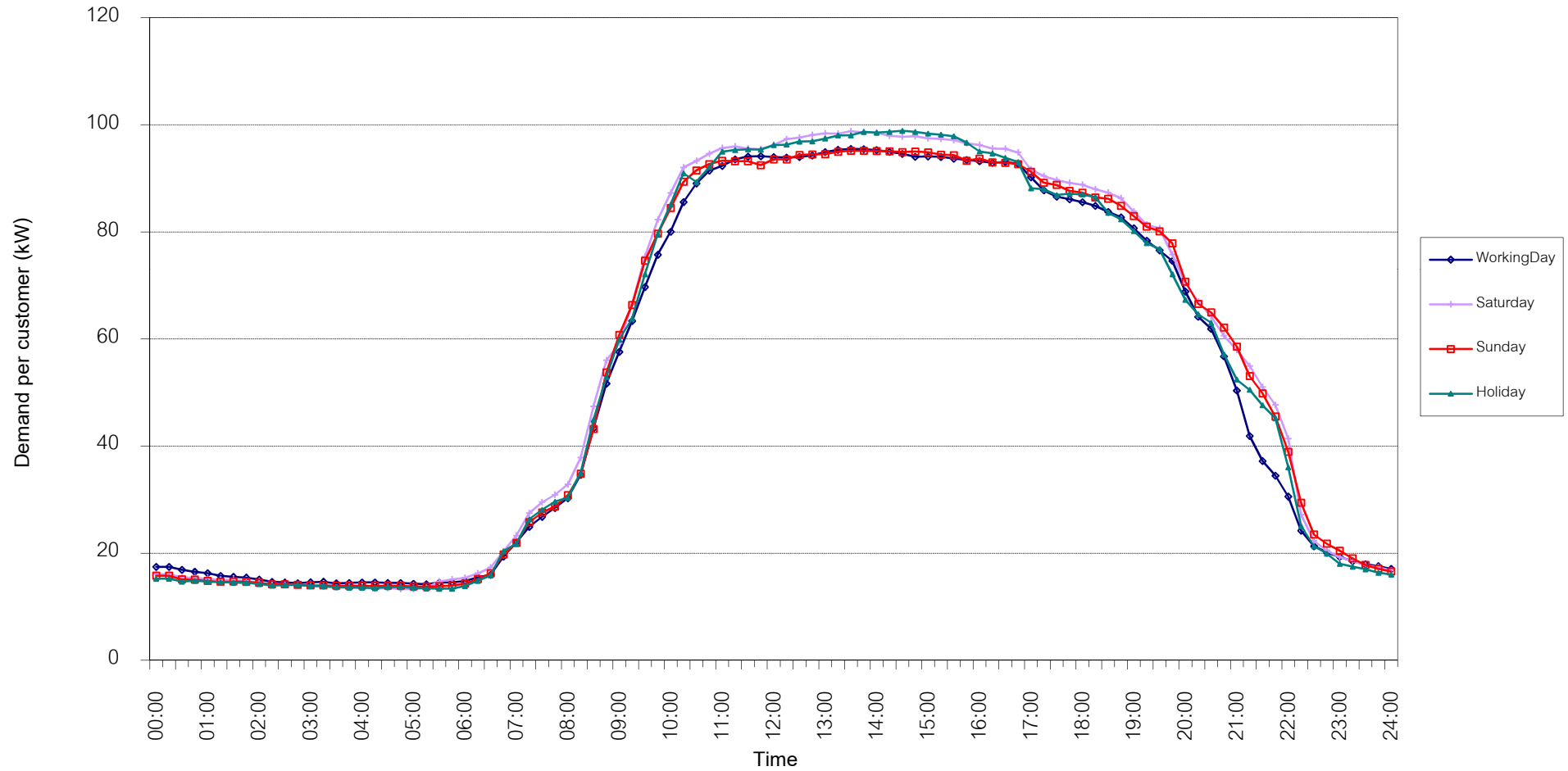


กราฟรูปที่ 14

TSIC 62 (Retail Trade) Load Profile

Date: 1 Oct, 2018 to 31 Oct, 2018

Number of sample customers = 93

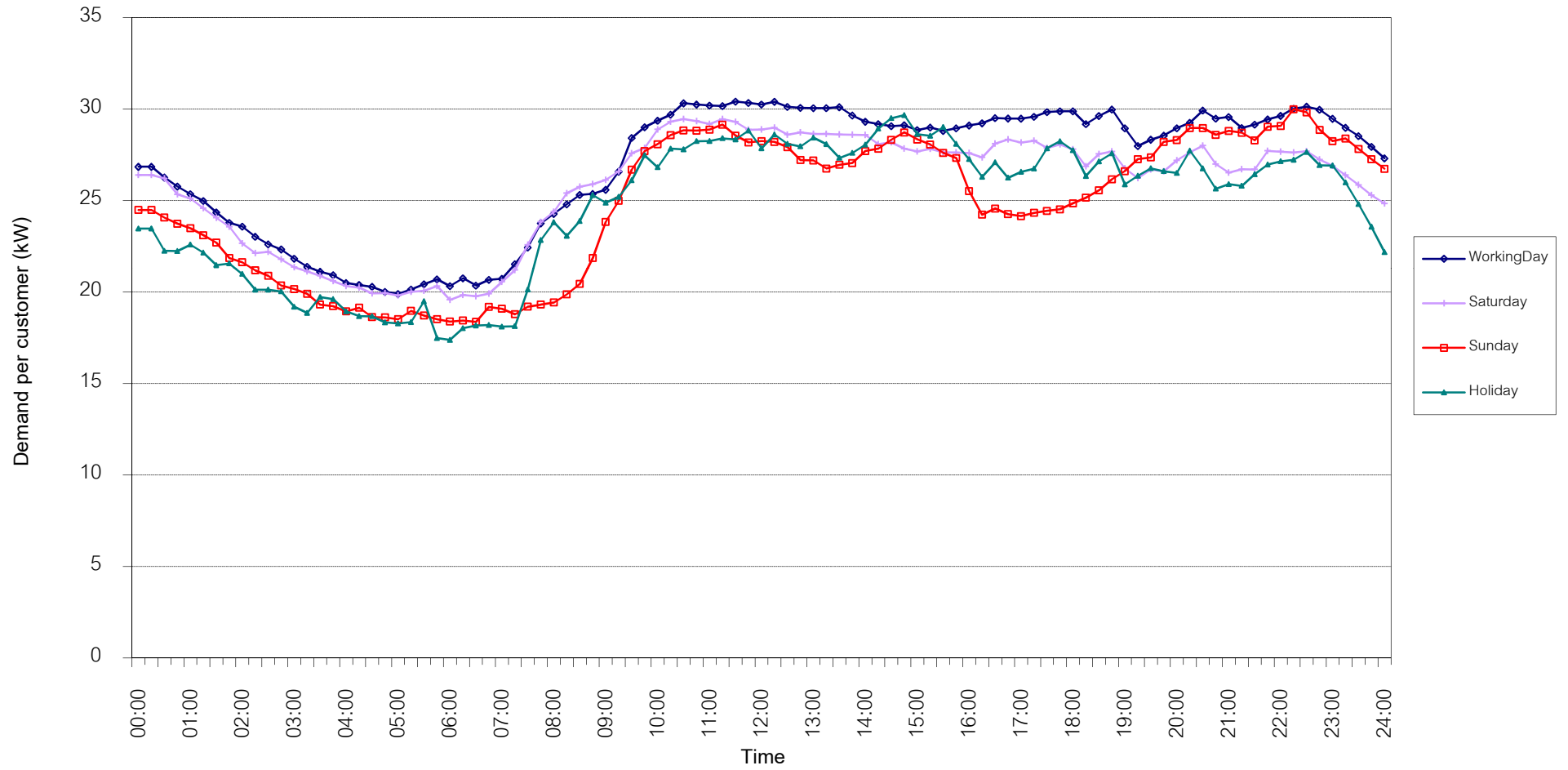


กราฟรูปที่ 15

TSIC 63 (Hotels and restaurants) Load Profile

Date: 1 Oct, 2018 to 31 Oct, 2018

Number of sample customers = 117

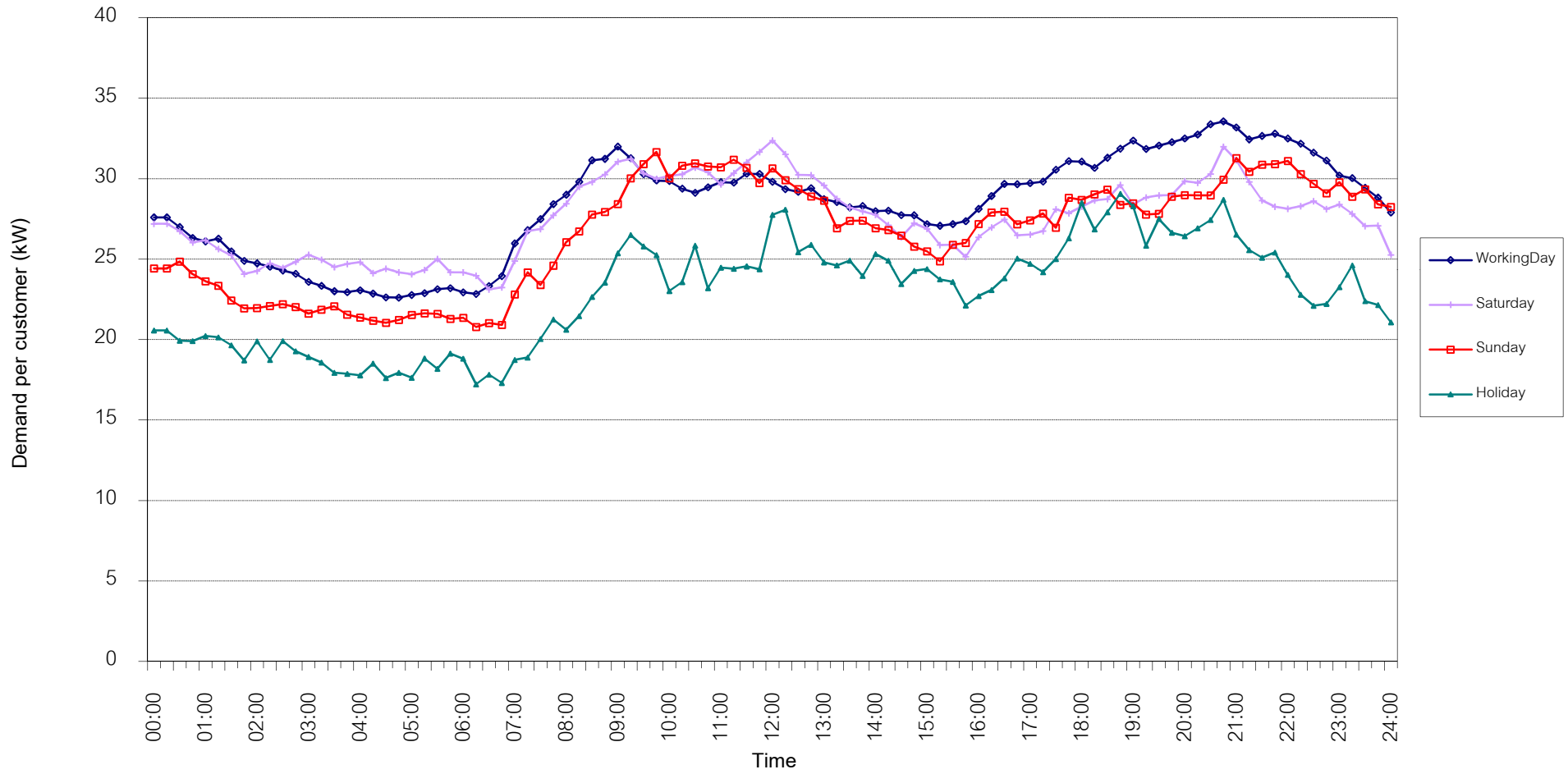


กราฟรูปที่ 16

TSIC 83 (Real Estate) Load Profile

Date: 1 Oct, 2018 to 31 Oct, 2018

Number of sample customers = 47

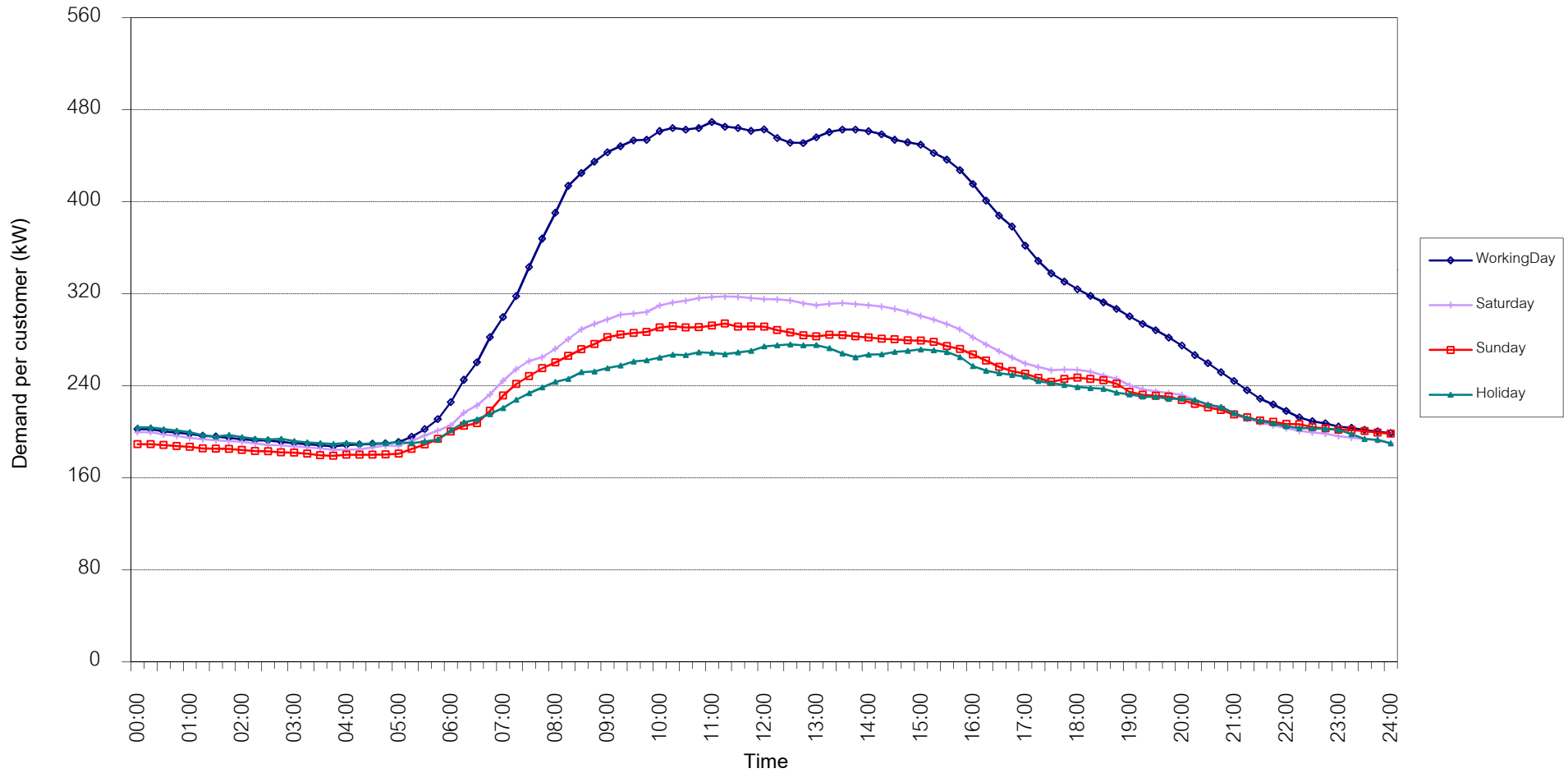


กราฟรูปที่ 17

TSIC 93 (Social Services) Load Profile

Date: 1 Oct, 2018 to 31 Oct, 2018

Number of sample customers = 27



กราฟรูปที่ 18

MEA's System Load Profile

Peak Day 18 Oct, 2018 at 14:00

