

ข้อมูลการศึกษาลักษณะการใช้ไฟฟ้า

เดือน มีนาคม 2561

Table 1-1

COINCIDENT WITH LOAD RESEARCH SYSTEM'S PEAK ON March 20,2018 time 15:15 8,110.55 MW
 (MEA SYSTEM'S PEAK ON March 20,2018 time 15:00 8,599.20 MW)

CLASS	Number of Customers	Kilowatt hours	Coincident Peak (MEA System Peak at time 15:00)		Coincident Peak (Load Research System Peak at time 15:15)		Sector Diversified Demand		
			MW	Contribution (%)	MW	Contribution (%)	Max MW.	Date	Time
Residential	3,171,673	1,105,504,258	1,583.38	19.58	1,618.74	19.96	2,620.22	19 Mar 18	22:30
Small General Service	502,406	670,117,632	1,274.91	15.77	1,263.92	15.58	1,921.61	30 Mar 18	10:45
Medium General Service	22,824	777,020,760	1,533.96	18.97	1,529.90	18.86	1,548.90	8 Mar 18	14:00
Large General Service	2,359	1,630,099,056	2,727.35	33.73	2,734.96	33.72	3,018.10	7 Mar 18	11:15
Specific Business	3,097	194,803,651	340.69	4.21	340.20	4.19	363.59	8 Mar 18	20:00
Non Profit Organization	323	11,511,036	37.62	0.47	36.13	0.45	51.81	7 Mar 18	10:15
Public Lighting	-	41,289,540	0.00	0.00	0.00	0.00	114.44	-	-
Loss	-	317,224,418	587.88	7.27	586.71	7.23	587.88	20 Mar 18	15:00
TOTAL	3,702,682	4,747,570,351	8,085.80	100.00	8,110.55	100.00	8,110.55	20 Mar 18	15:15

Table 1-2

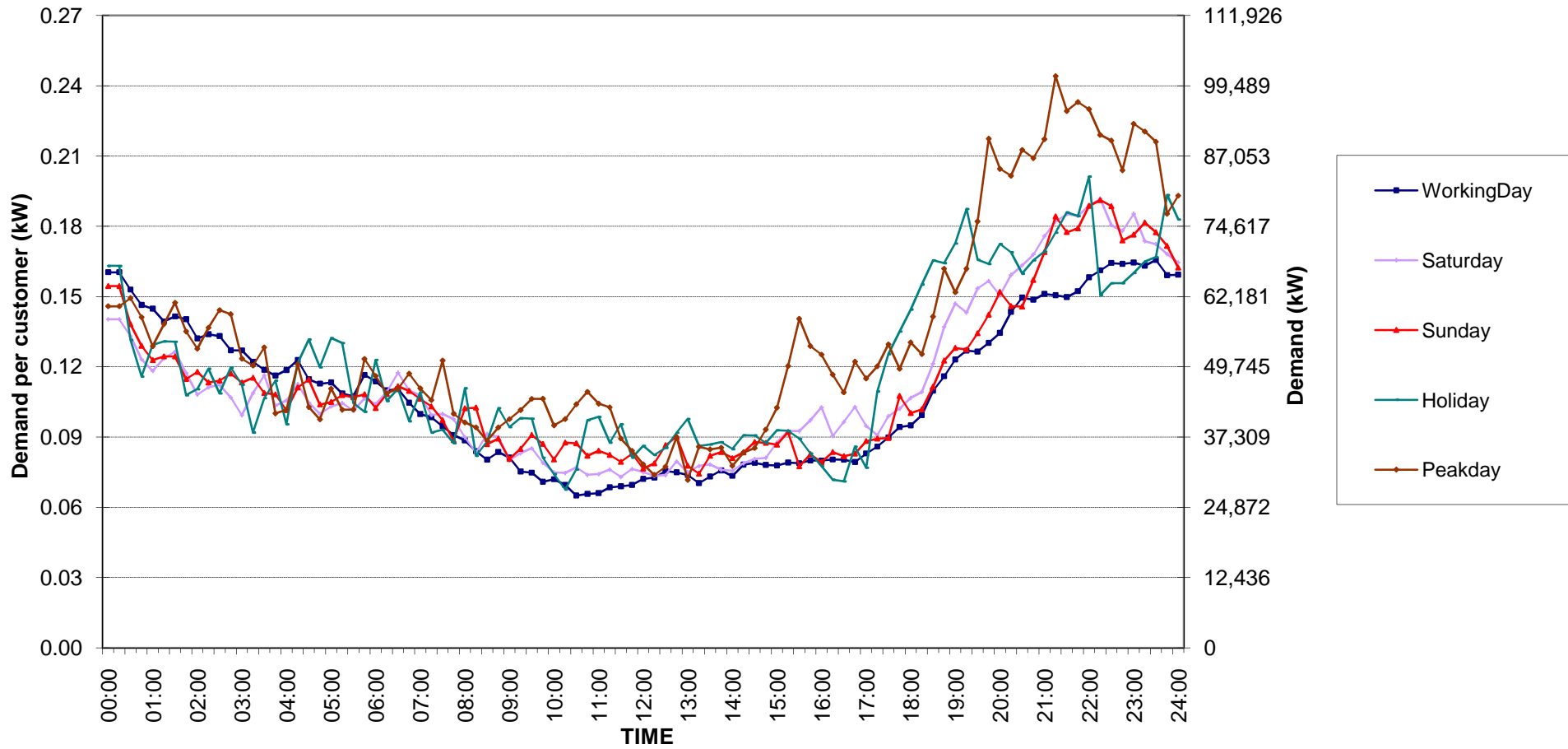
Number of sample customers on March, 2018

CLASS	Number of sample customers (Target)	Number of sample customers (Collected)
Residential	171	171
Small General Service	258	258
Medium General Service	165	165
Large General Service	284	284
Specific Business	74	74
Non-profit Organization	50	50
TOTAL	1,002	1,002

Residential (Energy Consumption less than 150 kWh per month)

Date: 1 Mar, 2018 to 31 Mar, 2018

Number of sample customers = 52

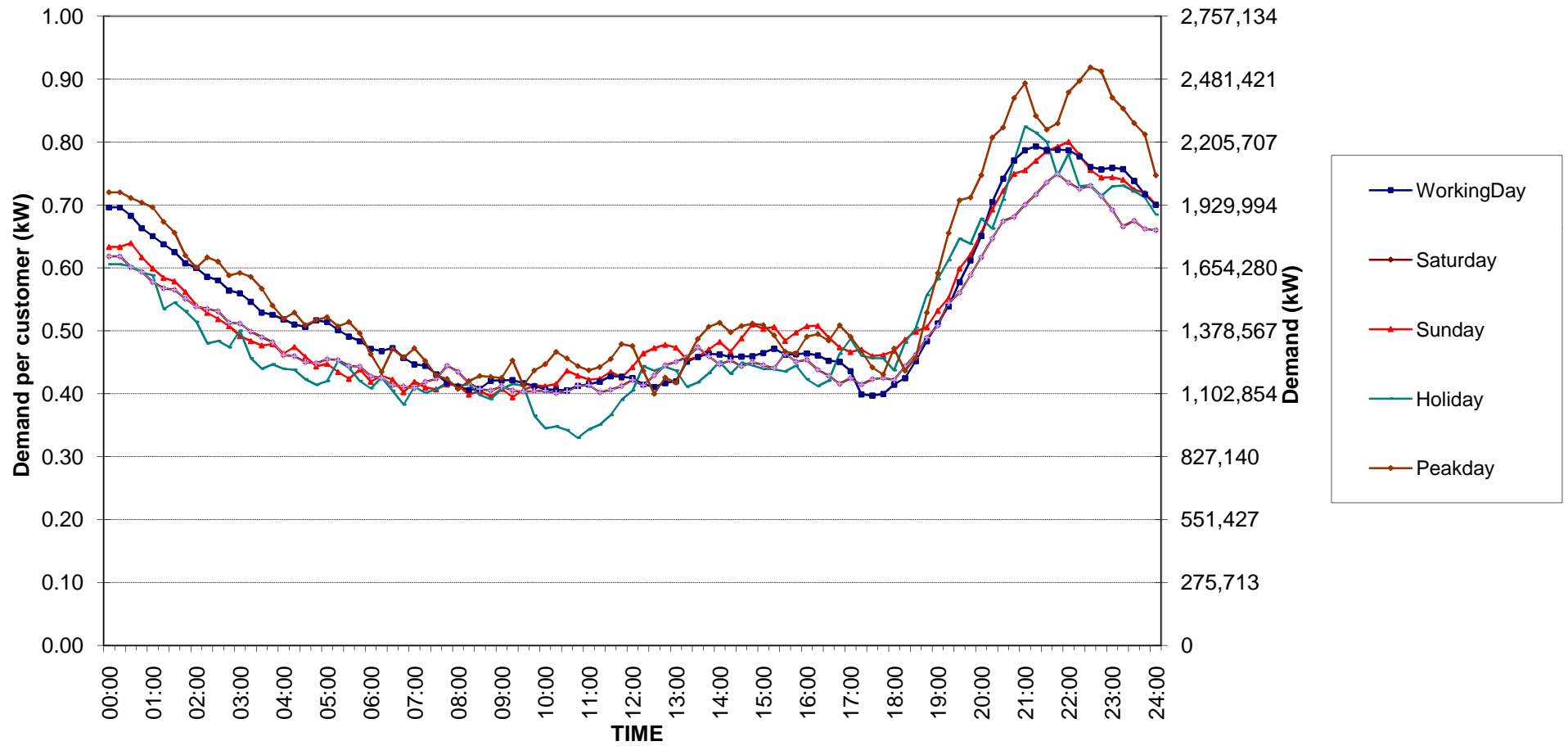


กราฟรูปที่ 1

Residential (Energy Consumption more than 150 kWh per month)

Date: 1 Mar, 2018 to 31 Mar, 2018

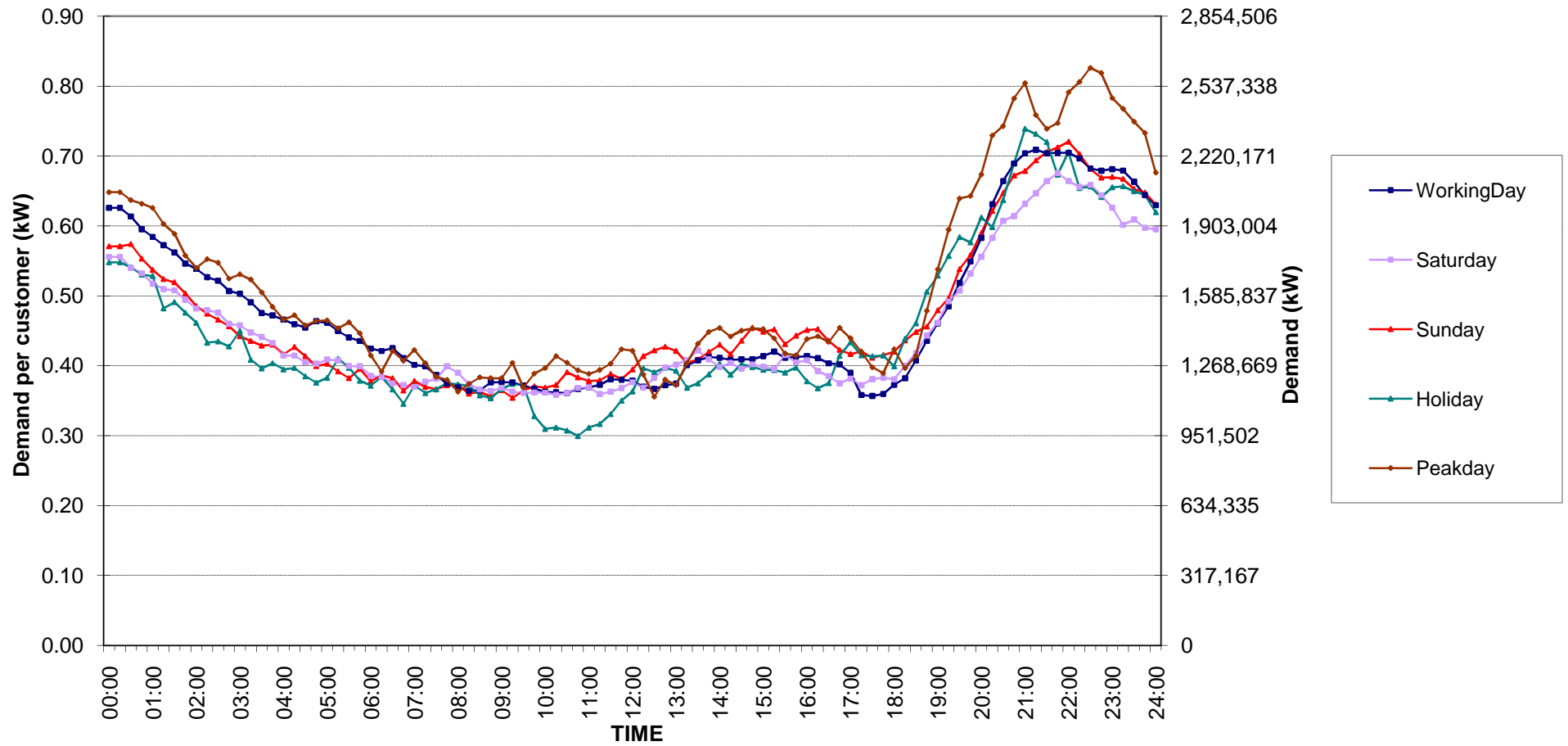
Number of sample customers = 119



Residential Load Profile

Date: 1 Mar, 2018 to 31 Mar, 2018

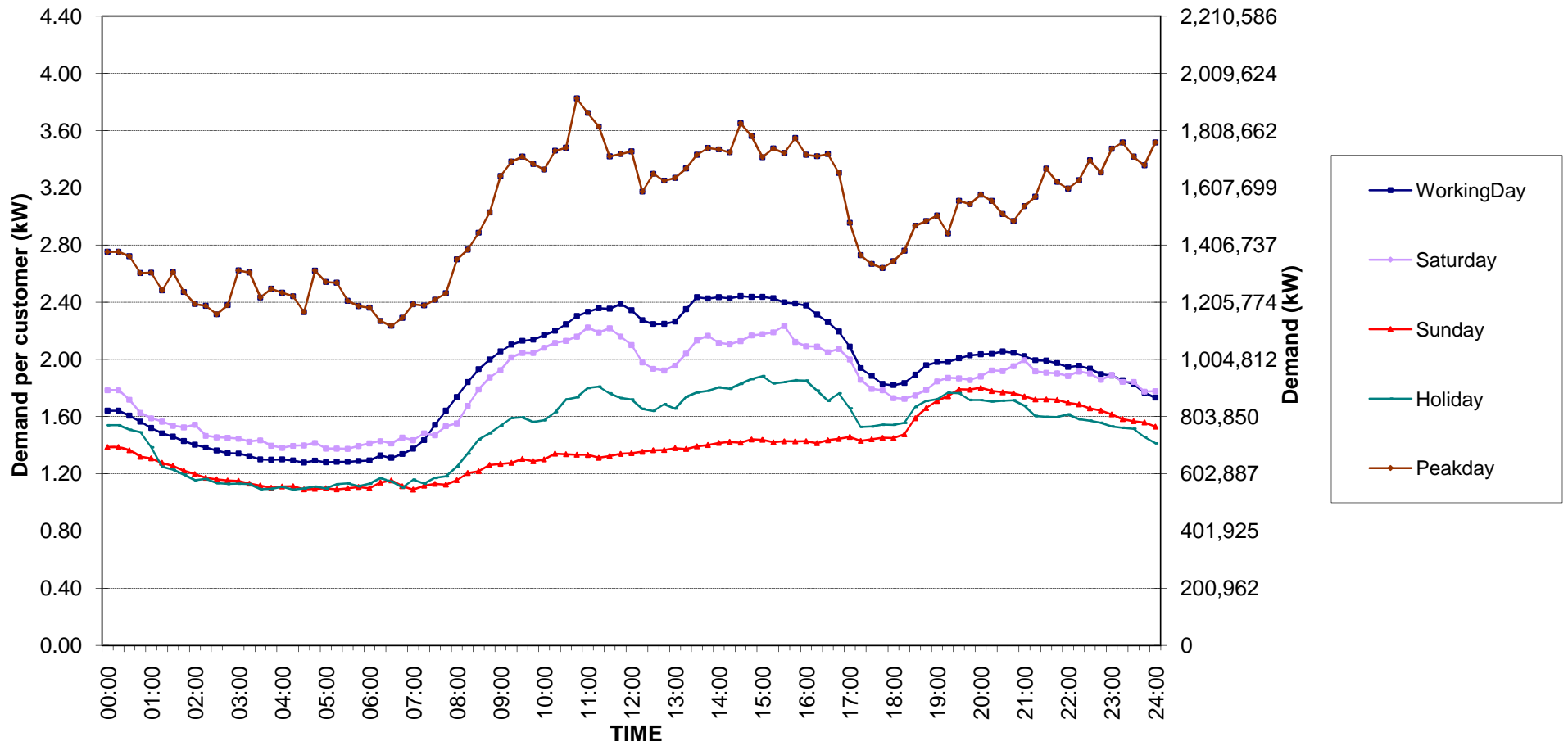
Number of sample customers = 171



Small General Services Load Profile

Date: 1 Mar, 2018 to 31 Mar, 2018

Number of sample customers = 258



กราฟรูปที่ 4

Medium General Services Load Profile

Date: 1 Mar, 2018 to 31 Mar, 2018

Number of sample customers = 165

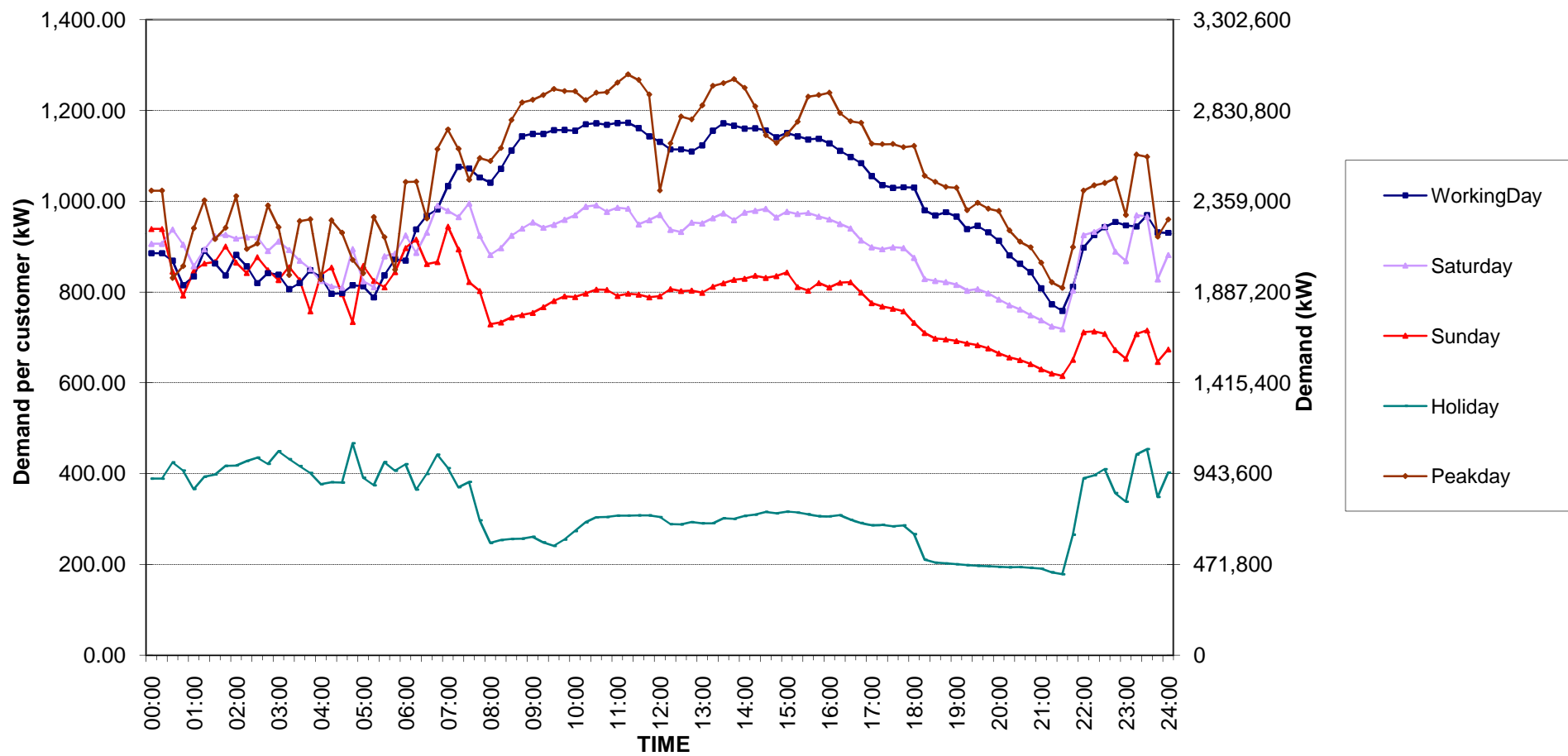


กราฟรูปที่ 5

Large General Services Load Profile

Date: 1 Mar, 2018 to 31 Mar, 2018

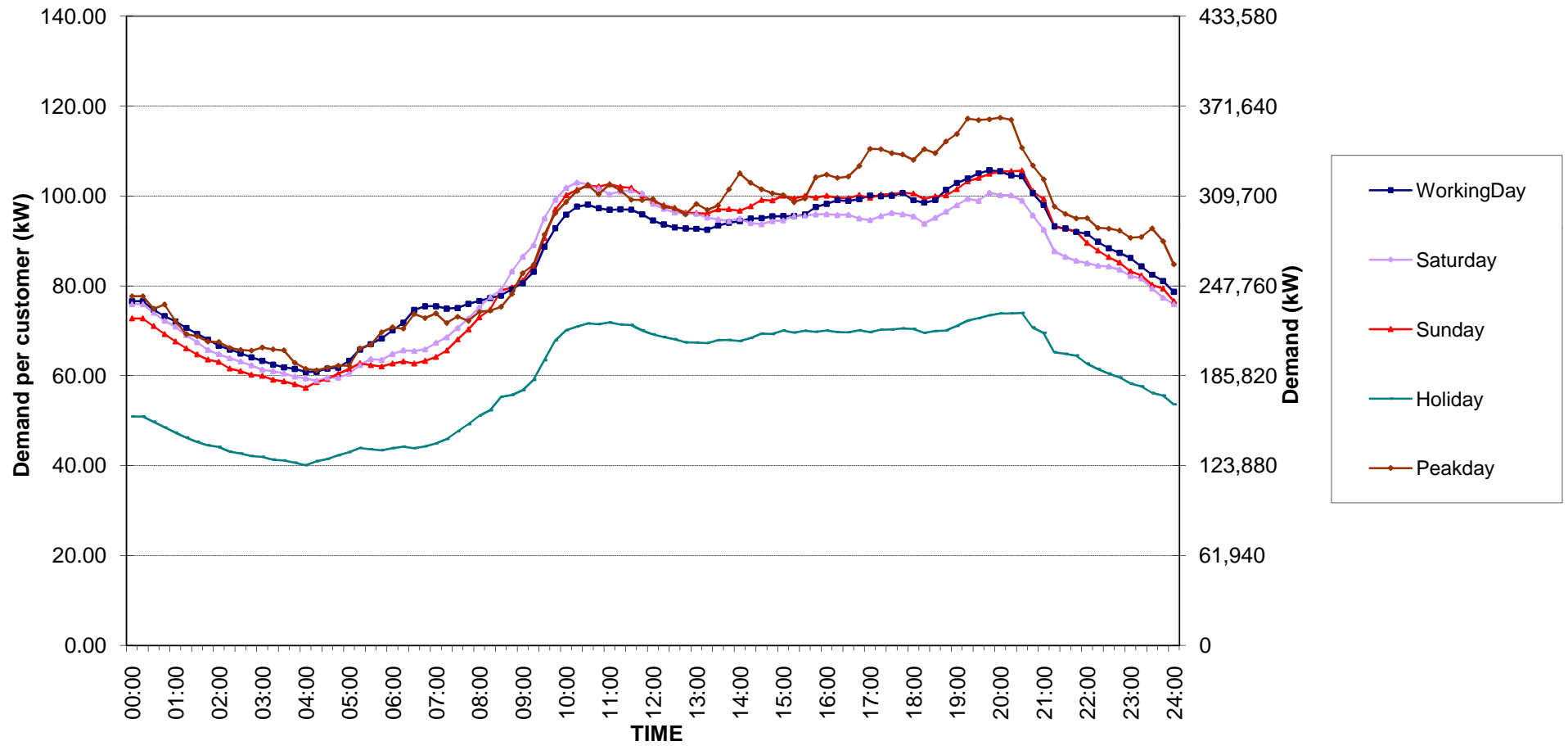
Number of sample customers = 284



Specific Business Load Profile

Date: 1 Mar, 2018 to 31 Mar, 2018

Number of sample customers = 74

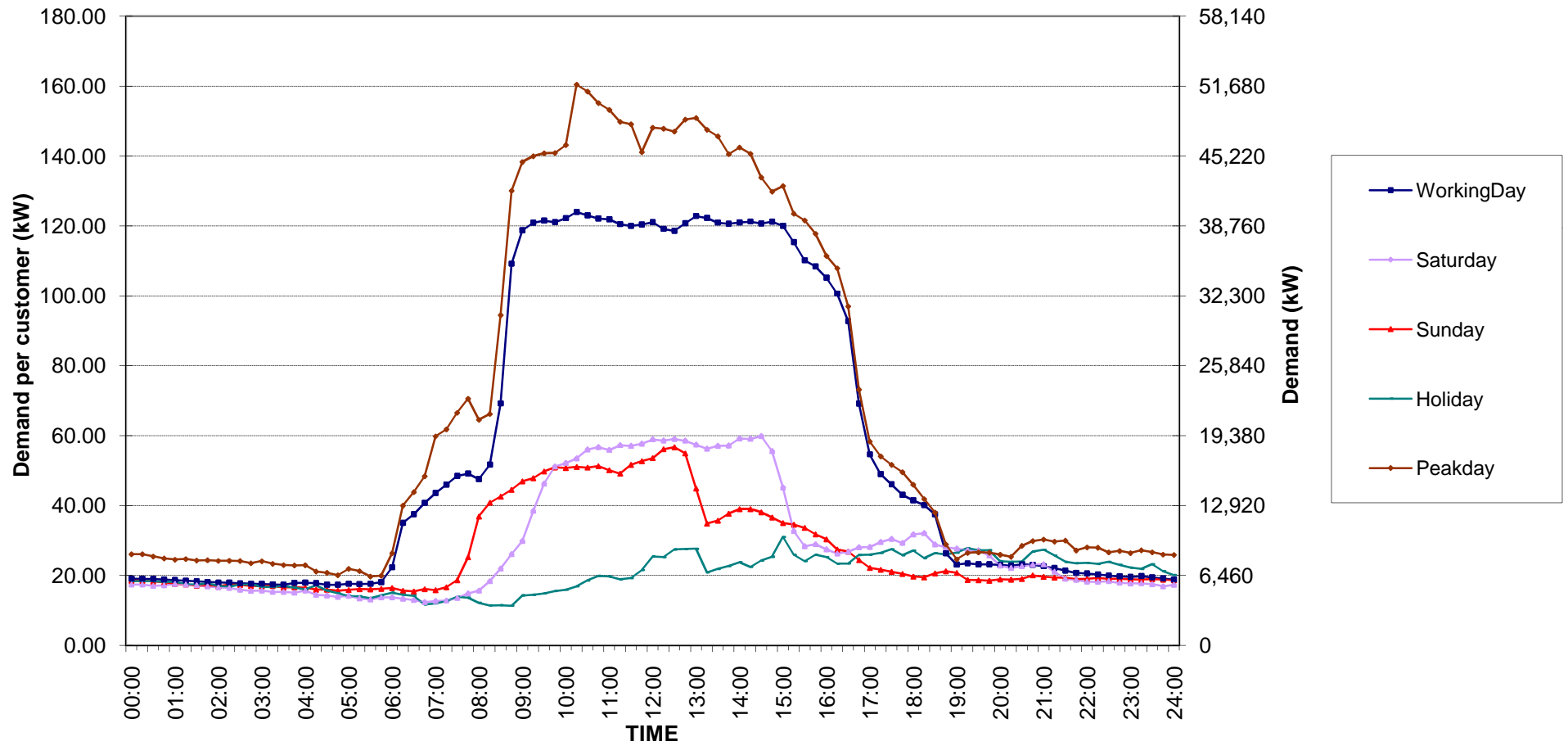


กราฟรูปที่ 7

Non-profit organizations Load Profile

Date: 1 Mar, 2018 to 31 Mar, 2018

Number of sample customers = 50

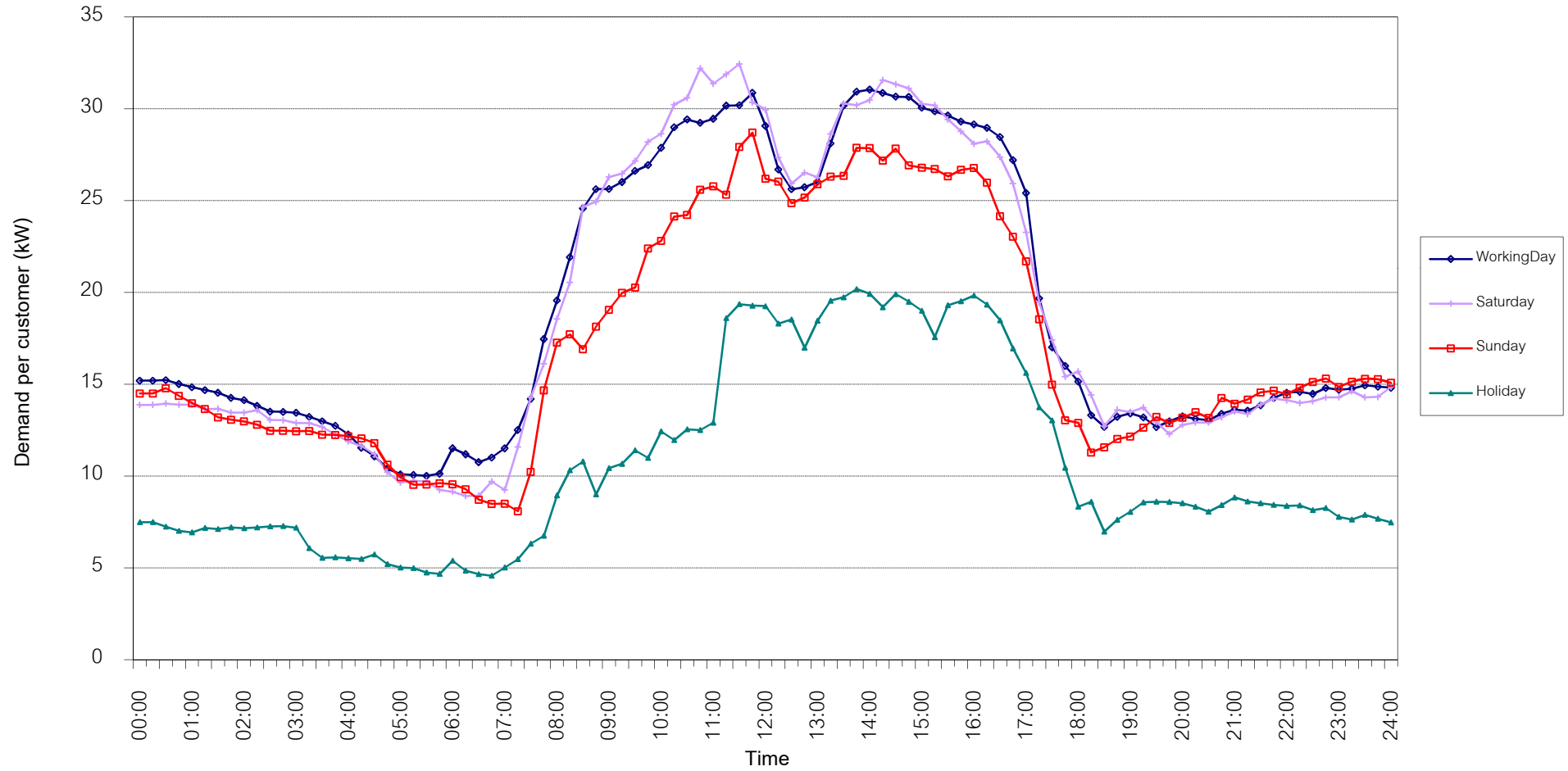


กราฟรูปที่ 8

TSIC 31 (Food Processing) Load Profile

Date: 1 Mar, 2018 to 31 Mar, 2018

Number of sample customers = 32

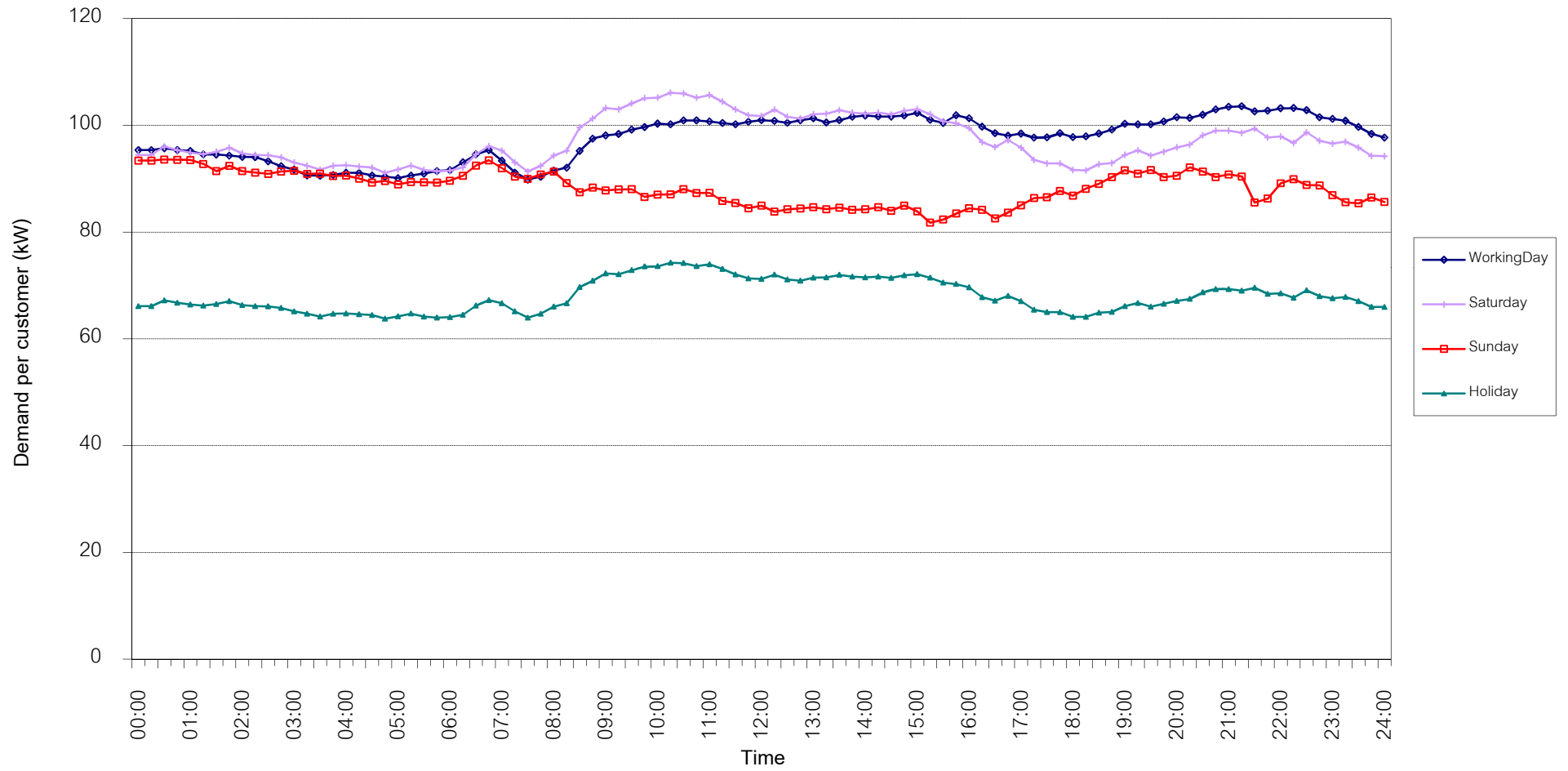


กราฟรูปที่ 9

TSIC 32 (Textiles) Load Profile

Date: 1 Mar, 2018 to 31 Mar, 2018

Number of sample customers = 67

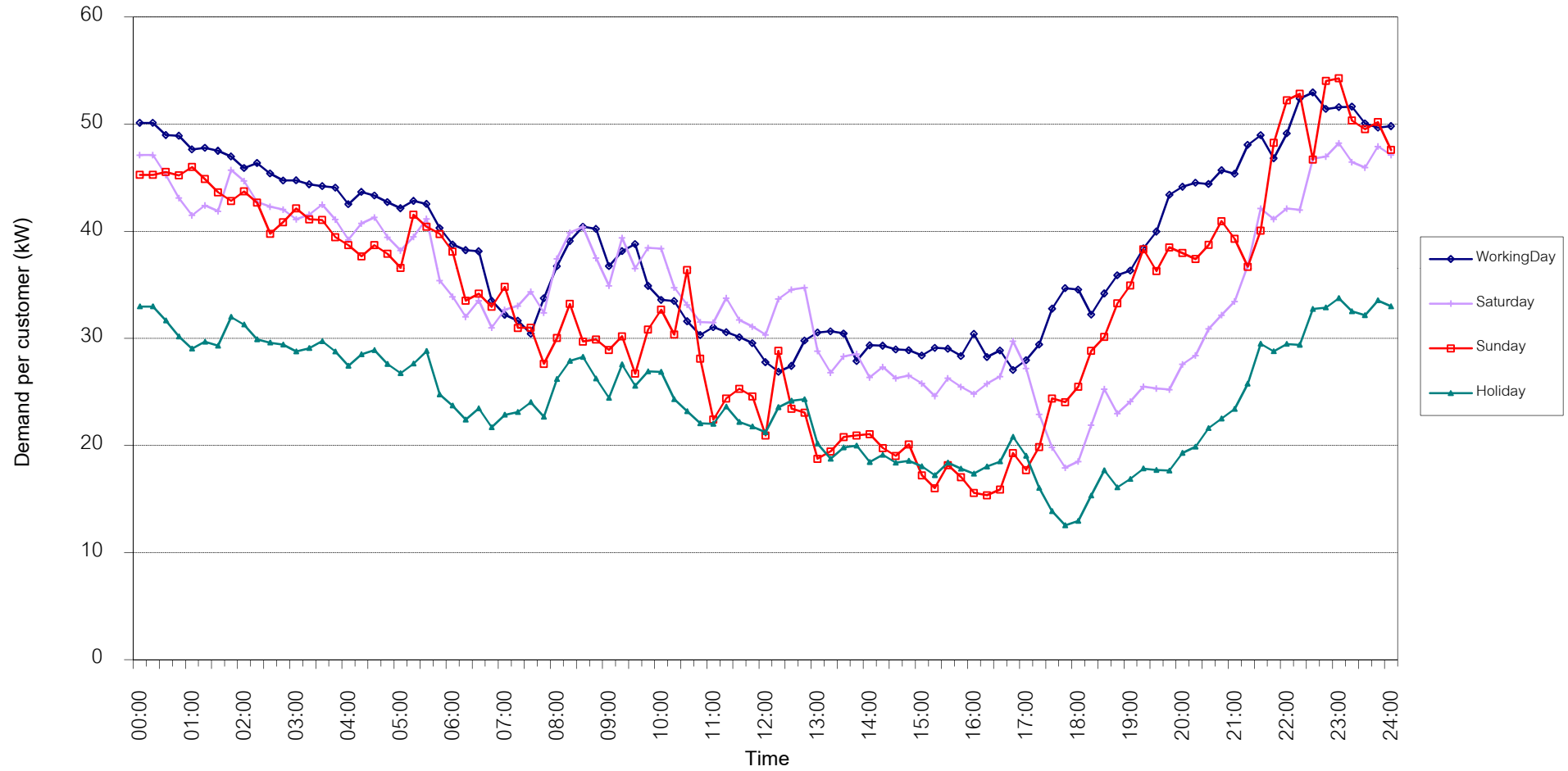


กราฟรูปที่ 10

TSIC 34 (Paper & Printing) Load Profile

Date: 1 Mar, 2018 to 31 Mar, 2018

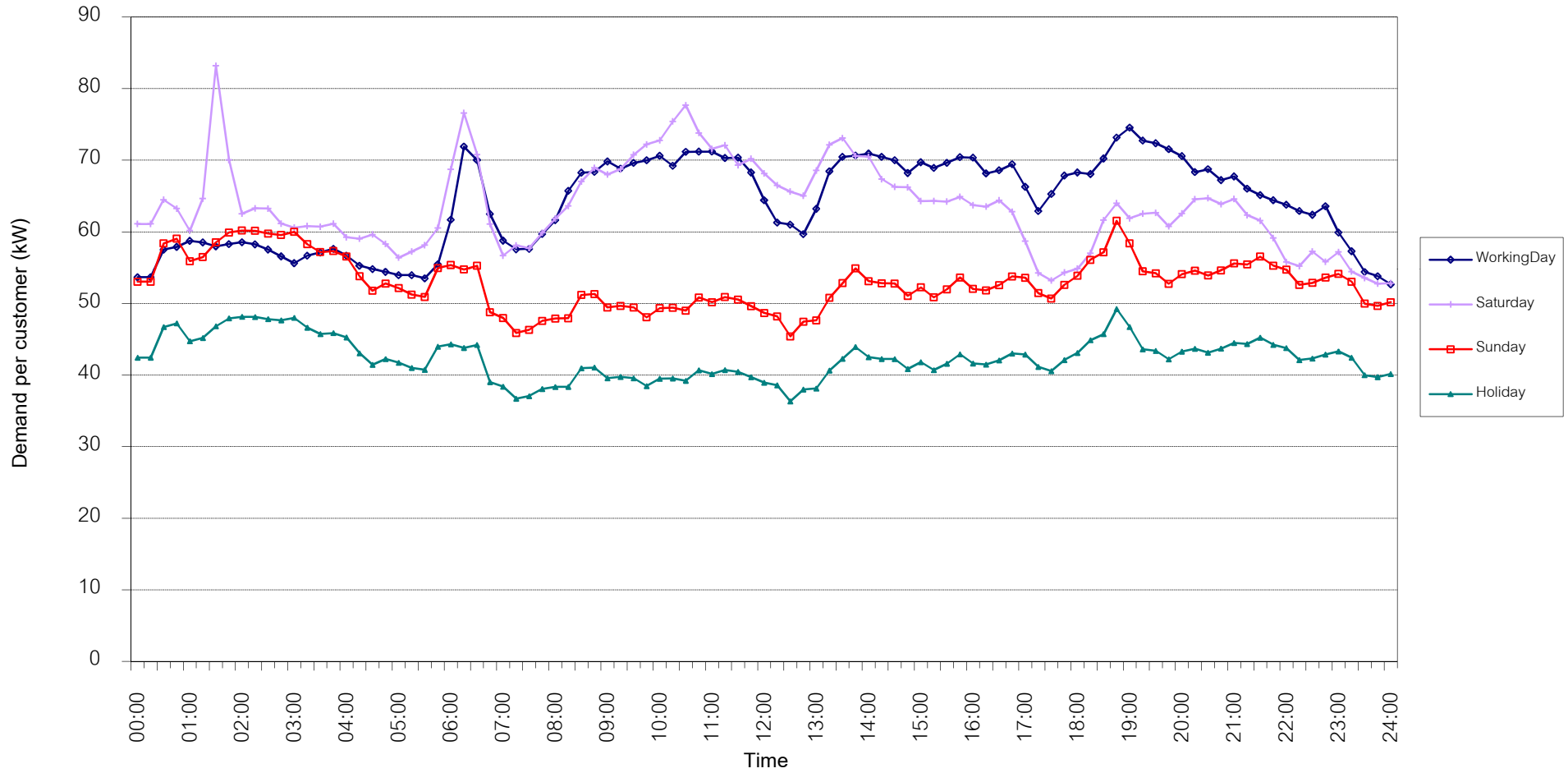
Number of sample customers = 12



TSIC 35 (Chemical & Petroleum) Load Profile

Date: 1 Mar, 2018 to 31 Mar, 2018

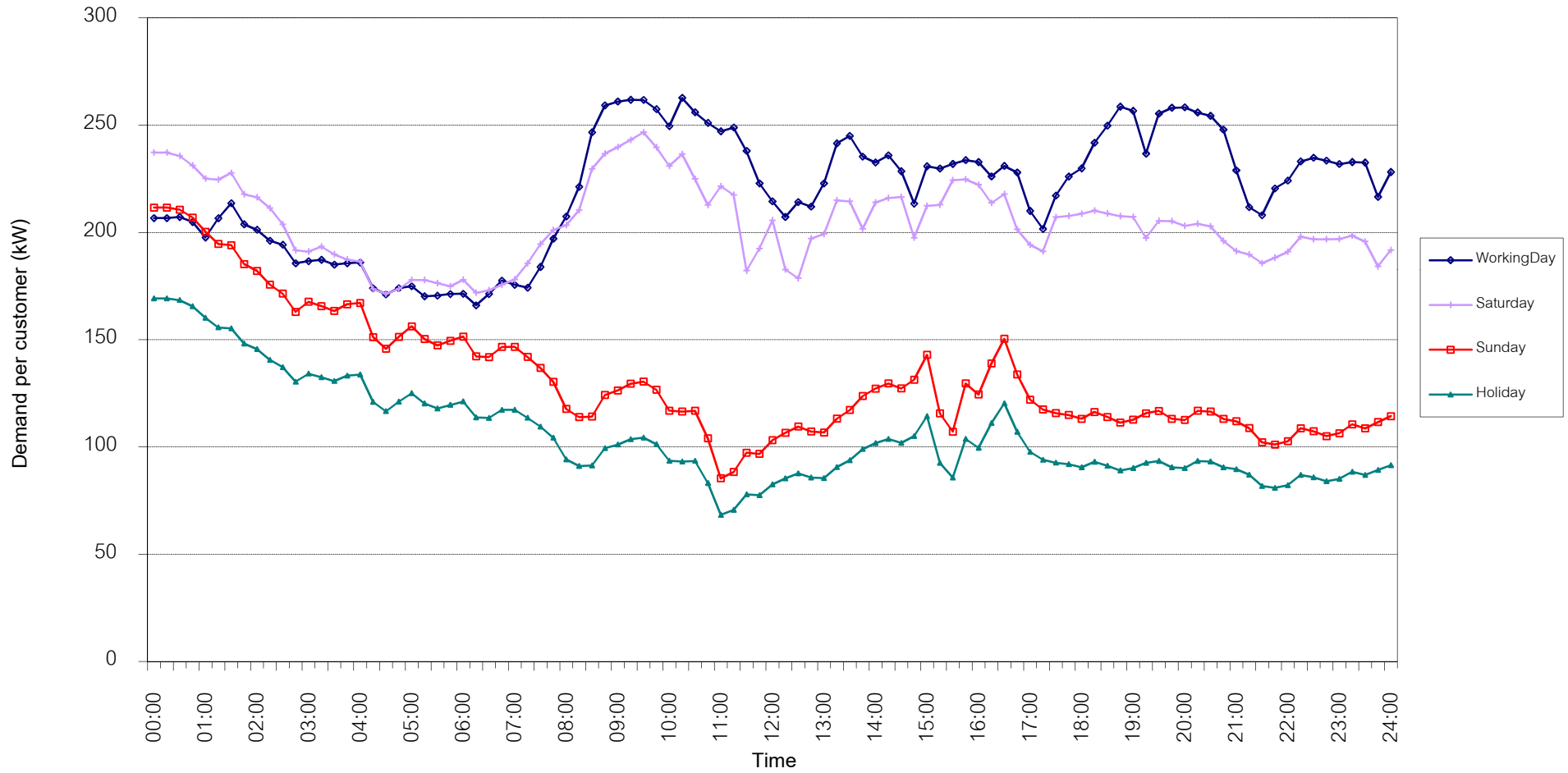
Number of sample customers = 75



TSIC 38 (Fabricated Metal Products) Load Profile

Date: 1 Mar, 2018 to 31 Mar, 2018

Number of sample customers = 62

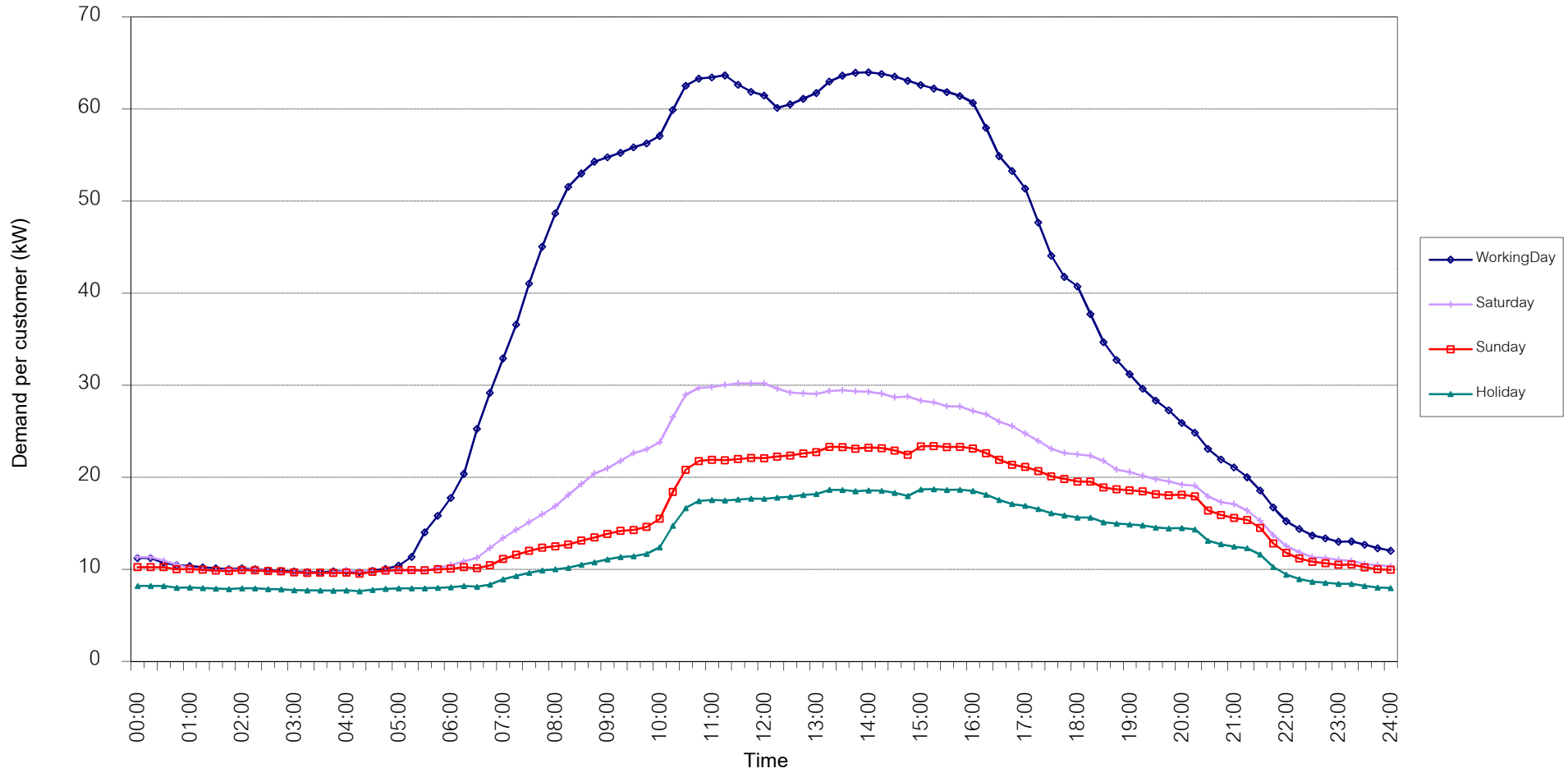


กราฟรูปที่ 13

TSIC 61 (Wholesale Trade) Load Profile

Date: 1 Mar, 2018 to 31 Mar, 2018

Number of sample customers = 48

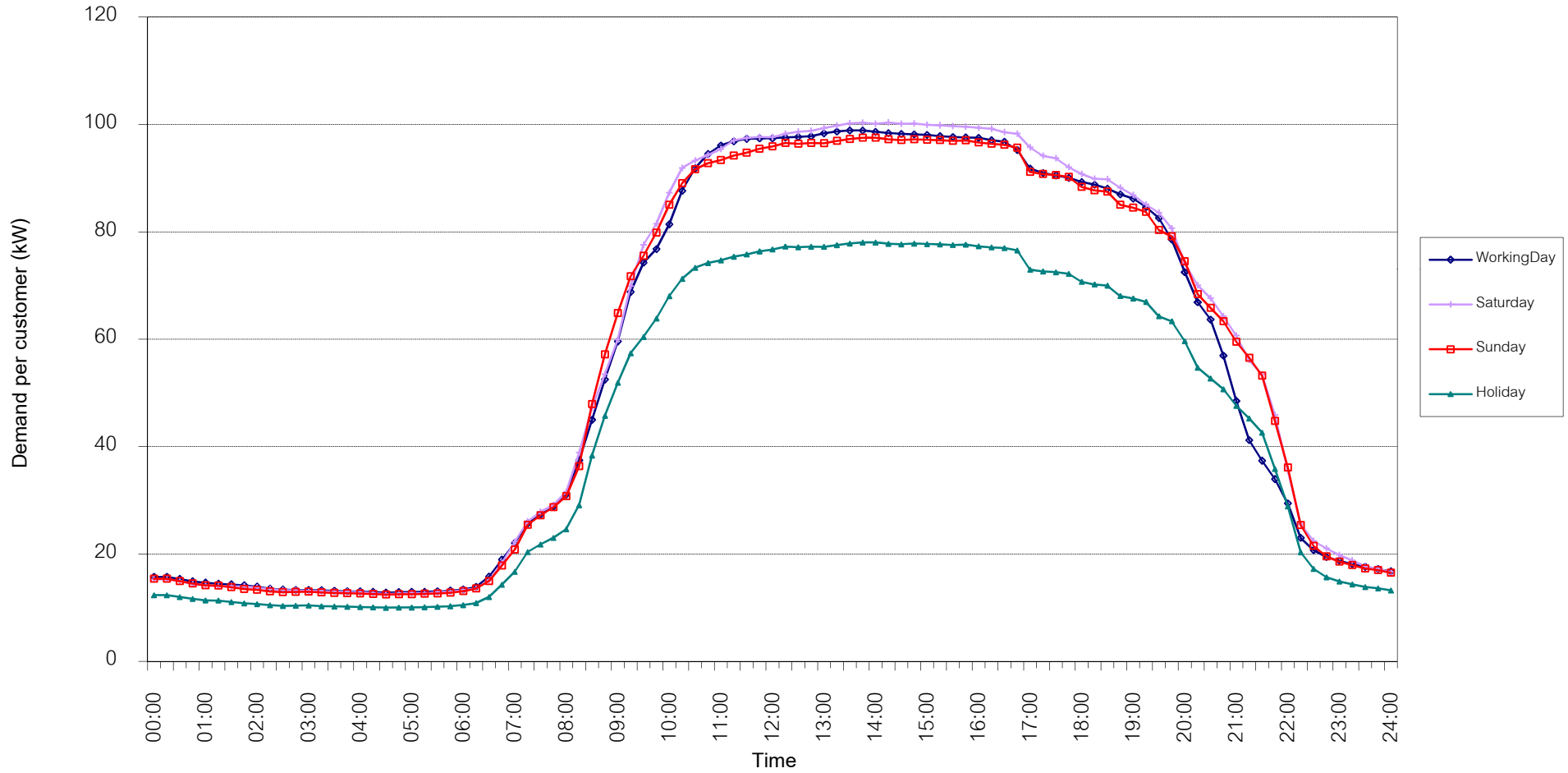


กราฟรูปที่ 14

TSIC 62 (Retail Trade) Load Profile

Date: 1 Mar, 2018 to 31 Mar, 2018

Number of sample customers = 93

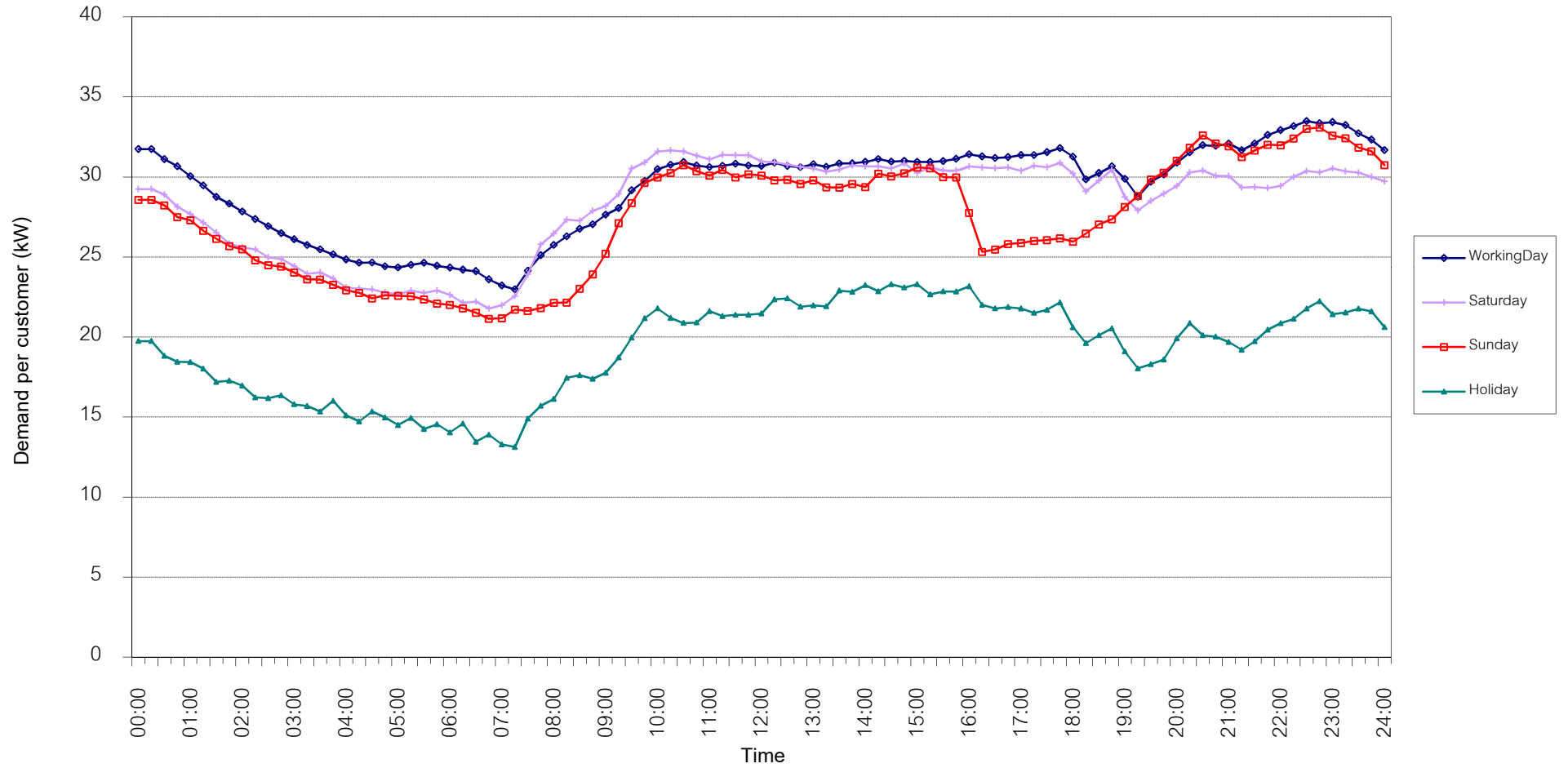


กราฟรูปที่ 15

TSIC 63 (Hotels and restaurants) Load Profile

Date: 1 Mar, 2018 to 31 Mar, 2018

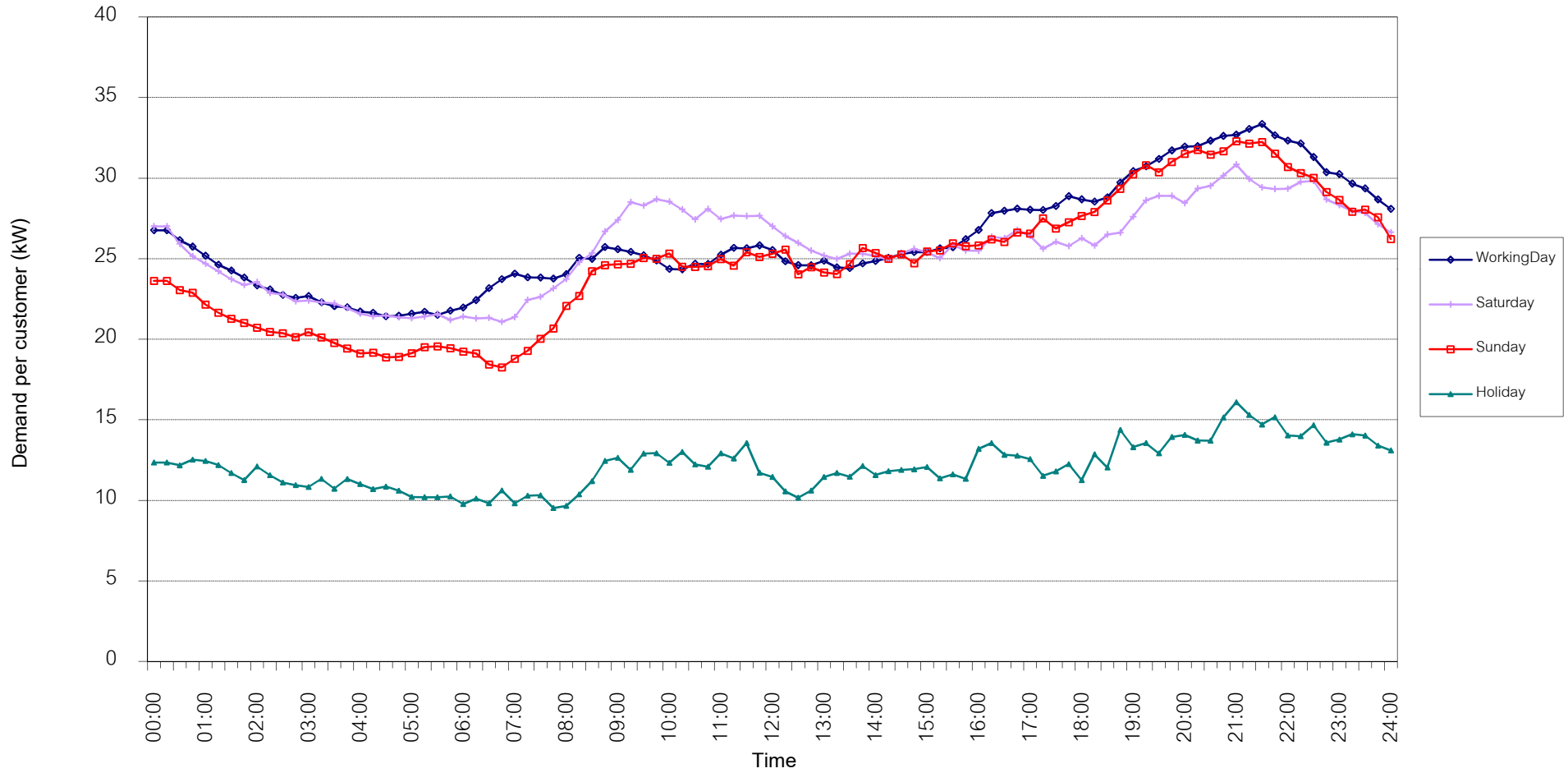
Number of sample customers = 117



TSIC 83 (Real Estate) Load Profile

Date: 1 Mar, 2018 to 31 Mar, 2018

Number of sample customers = 47

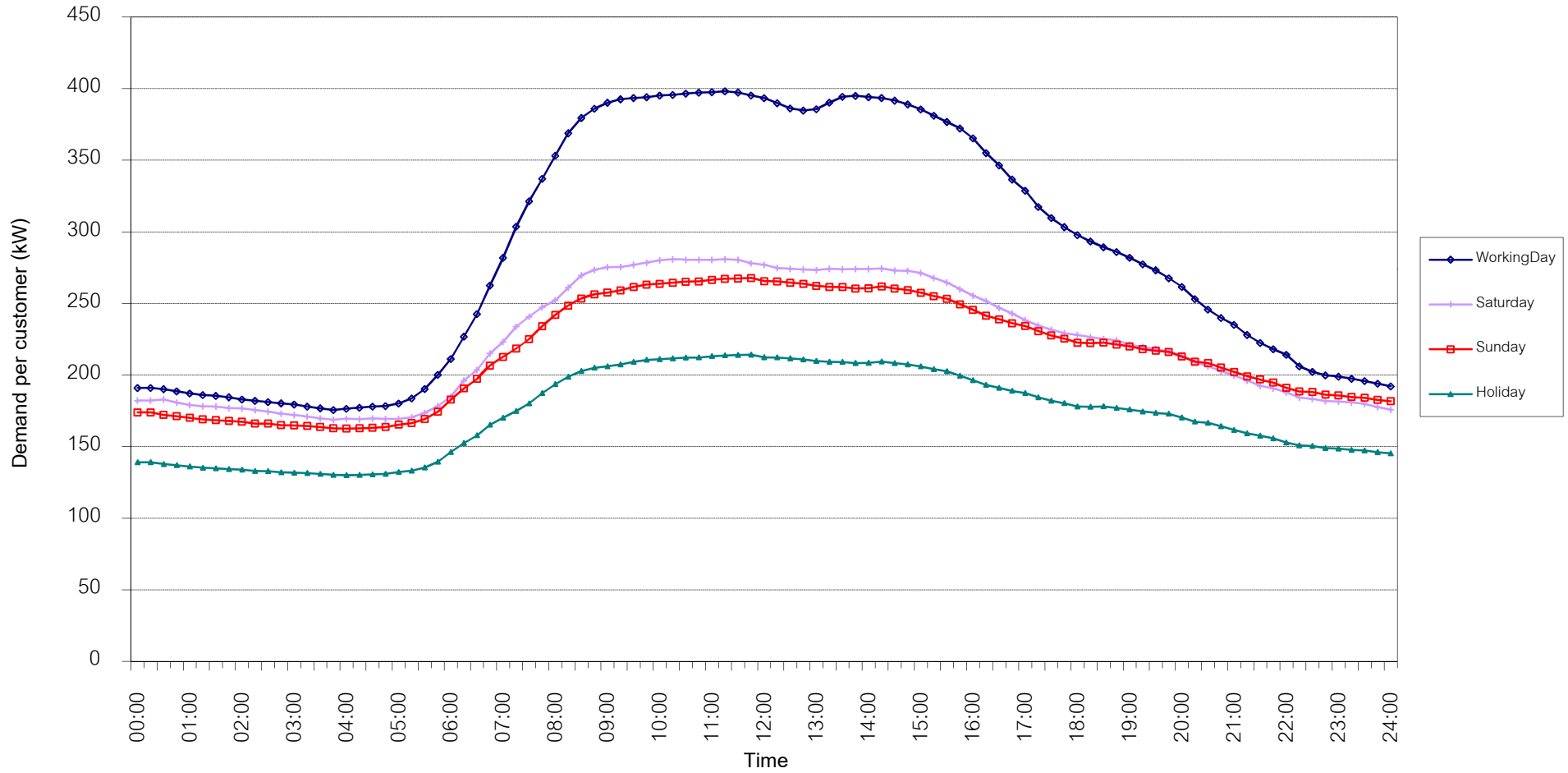


กราฟรูปที่ 17

TSIC 93 (Social Services) Load Profile

Date: 1 Mar, 2018 to 31 Mar, 2018

Number of sample customers = 27



กราฟรูปที่ 18

MEA's System Load Profile

Peak Day 20 Mar, 2018 at 15:00

